

THE ROYAL NAVY

AS A CAREER AND HOW TO JOIN IT

This book consists of three parts :

- Part I. A general description of life in the Navy.
- Part II. The various branches of the Service ; the pay and prospects, and type of men required.
- Part III. How to join the Royal Navy.



ADMIRALTY, WHITEHALL, S.W.1
1936.

PART I—LIFE IN THE NAVY

The Royal Navy, as a career, offers to men and boys of good physique and character :

Assured employment over a number of years ;

Good pay and steady advancement for capable men with special rewards for the man of exceptional ability ;

A life pension after 22 years' service (at the age of 40 or soon after) ;

Free food and living accommodation on up-to-date lines and of a high standard ;

A varied and interesting life ashore and afloat in home waters and on foreign service in all parts of the world ;

An opportunity for skilled work at higher pay in most trades ;

Finally, the inheritance of a great tradition, of good comradeship and healthy discipline based on mutual respect and shared enthusiasm.

Service Ashore and Afloat

A man in the Navy spends part of his service ashore and part afloat ; part of his service afloat is in home waters and part is abroad.

Although the proportion of time spent at home and abroad, and on shore and afloat, must vary from time to time, it is always divided as fairly as possible. All men take their due turn with others for foreign service.

Thus a man during the 22 years of a long service pension engagement will find plenty of variety and travel, and time at home to see his family and friends.

He may serve in battleships of the main fighting fleets, at home or in the Mediterranean, in cruisers of cruiser squadrons all over the world, in destroyer or submarine flotillas, in sloops patrolling and showing the Flag in the remotest parts of the world, in ships surveying uncharted waters and desolate coasts, or in aircraft carriers.

On shore, he may find himself at the big Royal Naval Barracks at the Home Ports, in the Training Establishments on shore, in the various Technical Schools, such as Gunnery, Torpedo, Signal Schools, and their experimental establishments—or abroad, at famous ports of the Empire overseas, such as Gibraltar, Malta, Hong Kong, Singapore, Bermuda, Colombo, and Simonstown.

Men usually remain in one ship for two or three years ; as a general rule, on foreign service, men do not spend more than three years at a time actually absent from home.

On entry, men are allocated to one of the three Home Ports—Portsmouth, Devonport, and Chatham. As far as possible they are allowed to choose the one nearest to their homes in civil life. Their Home Port remains their Service home throughout their career, and to its Royal Naval Barracks they return when their ship pays off after a commission.

Fleet Air Arm.—Service in the Fleet Air Arm is open to the Seaman, Signal and Telegraphist Branches, and provides an excellent opportunity for those who wish to combine a Sailor's life with an Airman's. Suitable volunteers are accepted as Air Gunners and Observer's Mates at considerably increased rates of pay. These men fly regularly in the course of their duties, but any man in the Navy may request to be given a flight to gain air experience.

Leave

The Navy has always to be ready to act and move without delay wherever its presence is required. For this reason leave in the Navy must always be subject to the requirements of the Service.

But whenever practicable, generous scales of leave with full pay are granted. In most sea-going ships in home waters these amount to 42 days' leave in the year.

Before sailing for a foreign station, 10 days' special leave is granted whenever possible, and on return, 14 days for each year of absence.

For periods spent on long leave, men are paid a special extra allowance to cover their expenses for food.

Shore Leave and Night Leave

Whether at home or abroad, shore leave (including night leave and, in some cases, week-end leave) may be granted after working hours except to the proportion of men required on duty on board.

Term of Engagement

The *Continuous Service* engagement is for TWELVE YEARS, which begin from the age of 18 for men entered at an earlier age.

At the end of that time, men may volunteer to re-engage TO COMPLETE TIME FOR PENSION, which means the completion of TWENTY-TWO YEARS' service from the age of 18 (or date of entry if later).

Note.—This re-engagement is a privilege, and cannot be claimed as a right, but men who have proved efficient and of good character are usually accepted.

The *Special Service* engagement is for twelve years also, but *only SEVEN YEARS* of this are spent on active service with the Fleet, the remainder being served in the Royal Fleet Reserve (see page 9).

Men entered for Special Service may transfer to Continuous Service. In order to be eligible to do this they must show sufficient promise and reach the physical standard required for Continuous Service.

The rates of pay for Special Service men are slightly lower than those for Continuous Service men.

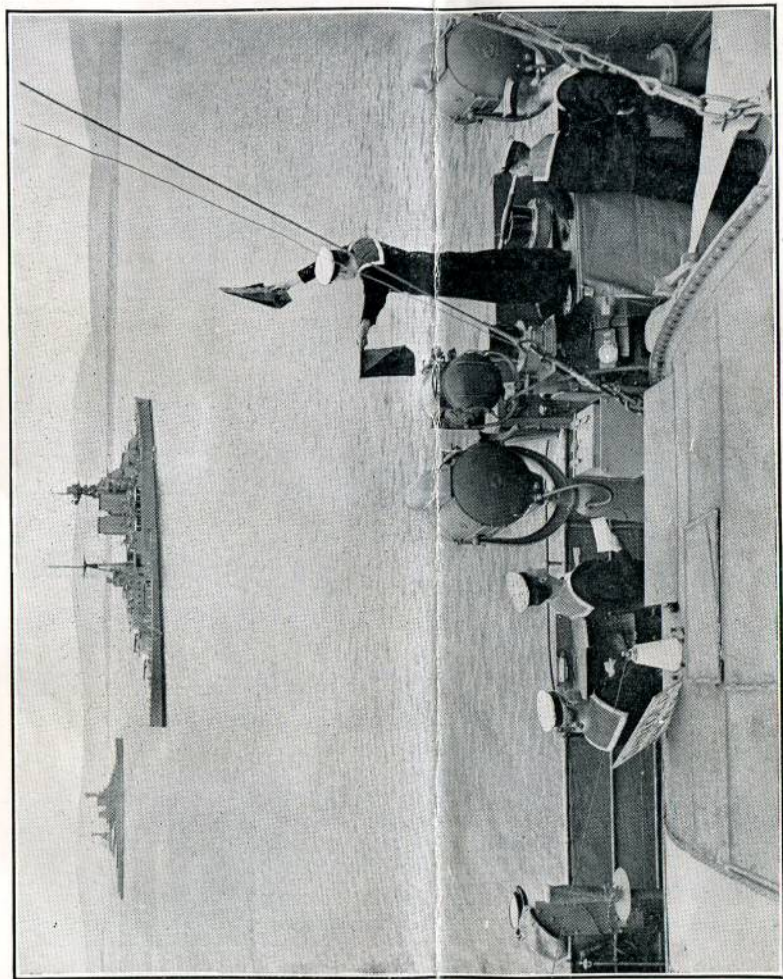
Promotion and Advancement

The successive steps or "ratings" through which a man passes (which have different, though corresponding, titles in the different branches) are as follows :

BOY RATINGS	Under 18, and under training ashore or in the Fleet.
ORDINARY RATINGS	Men not fully trained, but generally employed at sea.
ABLE SEAMAN RATINGS	Fully trained men.
LEADING RATINGS	Men qualified and selected as capable of taking charge of others, or specially qualified technically.
PETTY OFFICERS	Men with responsible duties generally employed in taking charge of lower ratings ; they mess separately from the latter and have many privileges as regards leave, etc.
CHIEF PETTY OFFICERS	Men who hold particularly responsible positions, mess separately from the petty officers, and have further privileges.

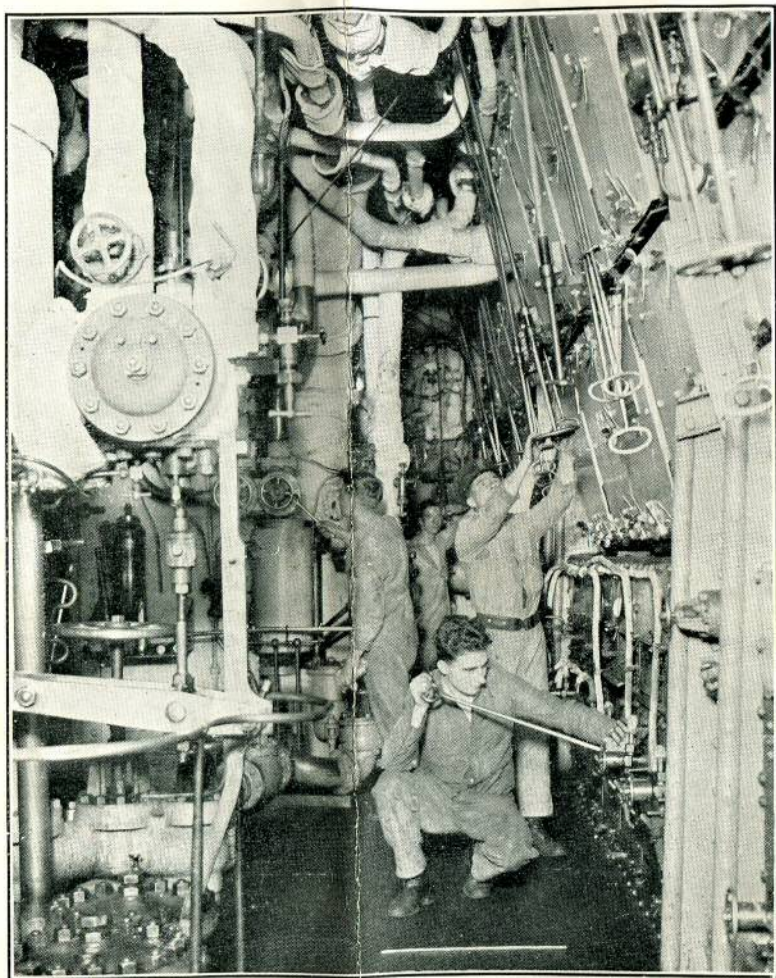
Capacity to command is regarded as the principal qualification for advancement in the Seaman, Signal and Stoker branches, and is an important consideration in all other branches. The rating of Petty Officer, at least, ought to be reached during his service by any man of reasonable ability who has personality and ambition.

Promotion is usually made as vacancies occur. Generally, there are certain tests a man must pass to show that he is qualified to be rated up ; if he is successful in them, his advancement usually depends on the recommendations of his own officers. In certain cases advancement may be accelerated by the passing of the necessary tests at the earliest possible opportunity.



[Photo by Fox Photos

SIGNALLING IN HARBOUR



[Photo by The "Topical" Press Agency, Ltd.]

AT WORK IN THE BOILER ROOM. H.M.S. "RENOWN"

Promotion to Officer's Rank.—For men of exceptional ability there are avenues of promotion to Officer's rank. Promotion to Warrant Officer, and Commissioned Officer from Warrant Rank, is open to men in all branches except Blacksmiths, Painters, Joiners, and Plumbers.

In the Seaman, Communications and Engine-room branches there are special opportunities for the promotion of outstanding young men direct to commissioned rank as Acting Sub-Lieutenants.

Further details about promotion to Officer's rank are given on page 27.

Food and Living Accommodation

For living and meal purposes, the ship's company are divided into Messes, which usually number about 16 men each. The "broadside" messes comprise the Seamen, Stokers, Signalmen, Telegraphists, Cooks, etc., of the lower grades. They occupy separate tables in a general Mess Deck, which usually includes the places where they sling their hammocks for sleeping purposes, and locker accommodation in which to keep their kit and personal belongings.

The Chief Petty Officers and Petty Officers, and certain classes of technical ratings, have separate enclosed mess rooms of their own.

Free rations are provided for all men serving afloat and ashore, wherever possible; otherwise an allowance is paid instead.

For feeding men ashore and afloat in all large and most modern ships an "issue of rations" has come to mean the "General Mess System." Under this system four meals a day—Breakfast, Dinner, Tea and Supper—are prepared by a Cookery staff under the direct supervision of the Accountant Officer, and served to all men on board alike. Ample facilities, such as cold storage, up-to-date cooking appliances, and adequate staff and organisation, enable these meals to be served punctually and regularly, with special consideration for men who miss the regular meal times owing to duty. The menus are carefully arranged so as to provide appetising and nourishing meals. A specimen of the weekly menu for a General Mess Ship is printed on page 35, which will show the type of fare provided.

In certain of the older and smaller ships where facilities do not permit of the adoption of the General Mess System, it remains the practice for a standard issue of rations of the principal articles of food to be issued to each Mess. The food is prepared by the men themselves with the assistance of the ship's Cookery staff, and is supplemented from a small daily allowance per head which is paid to the Mess for the purchase of "extras."

Canteens.—There are Canteens in practically all ships nowadays. They are run by the Navy, Army and Air Force Institute on all stations except China (where local contractors with special local knowledge are employed). The Canteen is not only a place where men can buy many extras of food and drink, such as confectionery, soft drinks, and ices; in a General Mess Ship it is one of the main sources of supply for such staple items as eggs, bacon, etc. The Canteen is also a general shop for the sale of all kinds of small goods required by the men, such as stationery, toilet gear, sports gear, etc.

The Canteens in some of the shore establishments include Beer bars.

In the larger and more modern ships there are usually such institutions as a Bookstall, where the latest papers and magazines may be obtained, a barbers' shop, and a laundry, all run by qualified men.

Ships also carry, for the use of the crew, libraries of books which contain works of modern fiction as well as historical and educational books.

Games and Recreation

Recreation rooms are provided for the different classes of ratings, in addition to messing accommodation, wherever the construction of the ship permits it.

The Service provides exceptional opportunities for keeping fit and taking part in games and athletics.

Football—Association and Rugby—is played at nearly every port that ships visit, and grounds are available at all fleet bases.

Opportunities for cricket, tennis, and hockey are also often forthcoming.

Regattas, for service boats under sails and oars, are a prominent feature of the life of the fleets.

Foreign service provides many opportunities for swimming and bathing under conditions more favourable than any at home.

Many ships nowadays are fitted with "Talkie" sets, which show up-to-date films at a very small cost to the men, and radio sets are also widely used.

Ships commissioning are usually given a grant or loan towards the cost of their first equipment of sports gear, which substantially relieves the men of this expense.

Awards for Good Conduct

By good conduct men can earn up to three Good Conduct Badges, each of which carries extra pay at the rate of 1s. 9d. a week. Subject to detailed conditions laid down in the King's Regulations and Admiralty Instructions, these badges can be earned after three, eight, and thirteen years' service respectively, counting from the age of 18 or date of entry if later.

Fifteen years' continuous very good conduct can earn the Long Service and Good Conduct Medal, which carries with it a gratuity of £20 in cash.

A Continuous Service man who has been awarded the Long Service and Good Conduct Medal can begin to earn, by further very good conduct, an additional gratuity of £1 for each year of service, payable on discharge to pension.

Education

In modern times the Navy is composed of educated men; certain branches demand more technical skill than others, but there is none which does not call for the exercise of intelligence and ability.

In all ratings nowadays a preliminary educational test is required before entry; this is usually quite simple, but it ensures that men entered will be capable of taking advantage of the facilities which exist in the Navy (without expense to the men) of continuing their education while serving, so that those who join with a somewhat scanty store of learning can obtain a good education which will stand them in good stead for the remainder of their lives.

Care of Families and Dependants

The widows and children (or other dependent relatives in some cases) of men who are killed or die as the direct result of their service are eligible for pensions and allowances from the Crown.

The Royal Hospital School, Holbrook (late Greenwich), the R.N. and R.M. Orphan Homes at the Home Ports, and several other naval institutions exist to provide for the upbringing and education of the children of naval men, especially those who are orphans.

The Royal Naval Benevolent Trust, which is staffed and run by the men of the Navy themselves, deals with charitable work of every kind connected with the men of the Navy, and is always available to help in cases of distress.

Special official and unofficial organisations also exist at the Home Ports to look after the welfare of sailors' families during the men's absences at sea.

Pay and Allowances, Pensions and Insurance

The current rates of pay are given in Part II.

Men receive their pay fortnightly at home, and monthly abroad. Facilities are given for them to send money from their pay to their families and friends, regularly every week or month, free of expense.

Marriage Allowances to Wives and Children.—Marriage Allowance is issuable to the legal wives, and in respect of legitimate children (including step-children and, in certain cases, adopted children) under 14 years of age, of all men who have attained the age of 25 years, provided that a home is maintained to which the husband can return whenever the exigencies of the Service permit, and that a qualifying allotment of his pay (14s. a week in the case of most of the lower ratings) is declared by the man. The rates of Marriage Allowance are adjusted on a sliding scale annually in accordance with the Cost of Living Index Figure. The present rates are :—

	s.	d.
For a wife	10	0 per week.
For a wife and one child	15	0 ..
For a wife and two children	18	0 ..
For a wife and three children	20	0 ..

And 1s. for every additional child.

Particulars of the rates in force from time to time can be obtained from the Admiralty or Recruiting Staff Officers, R.N. and R.M.

National Health Insurance.—Contribution is not stopped out of men's pay, but is paid by the Admiralty to the Ministry of Health.

Widows', Orphans', and Old Age Contributory Pensions Act.—Contributions at the rate of 5½d. per week will be stopped out of men's pay during the whole of their service as ratings. This will entitle them to the benefits payable under the Act. Where, however, a man's death is attributable to the Service, the pensions referred to previously will be substituted for pensions under the Widows', Orphans', and Old Age Contributory Pensions Act, if more favourable.

Unemployment Insurance.—Ratings are not insured during service in the Royal Navy, but on discharge, except in certain circumstances, are given a free credit of contributions.

Pensions.—After 22 years' qualifying service, pensions are awarded for life. The present scale varies from about £38 a year to about £87 a year according to conduct and the position filled.

Men disabled or invalided from the Service are eligible for pensions or gratuities according to circumstances. Life pensions may be granted, irrespective of length of service, to men invalided for severe injury sustained on duty.

Age Pensions of 2s. 11d. a week will be granted to Life Pensioners of good character when they reach the age of 55.

Pensions at varying rates may also be granted from the funds of Greenwich Hospital at the discretion of the Admiralty to Petty Officers, Non-Commissioned Officers and Men of the Royal Navy and Royal Marines incapacitated by ill-health.

Employment on Discharge

Ex-naval ratings, especially long service pensioners, have a high reputation among employers as reliable and competent men.

Men who are nearing their time for discharge are, if time permits, given an opportunity of attending Vocational Training classes to receive instruction in trades likely to improve their prospects of civil employment. These classes are held at the Naval ports and also, where practicable, on board ship by means of correspondence courses.

The National Association for the Employment of Regular Sailors, Soldiers and Airmen exists for the purpose of assisting eligible ex-Service men in finding civil employment. It has branches in all the principal towns of the United Kingdom.

Men of good character are eligible after discharge from the Royal Navy and Royal Marines for various subordinate posts in Government departments which are reserved for ex-Regular members of the Forces. Included among these are posts as messengers, etc., at the Admiralty and in Naval Establishments which are specially kept for deserving Royal Naval and Royal Marine Long Service and Life Disability Pensioners or men invalided as the result of wounds and injury attributable to the Service.

Some appointments under the Post Office are also specially reserved for men who have served in the Royal Navy and Royal Marines.

Uniform

All men are provided with a free kit, including a set of bedding, on entry, and during their service they are paid an allowance to cover the cost of keeping it up to date and in good condition.

Men in the Seaman, Signal, Telegraphist, Stoker, and Sailmaker branches wear the traditional "sailor" uniform until they are rated Petty Officers (confirmed) over 1 year's seniority, when they wear Petty Officer's uniform.

Men in other branches wear a uniform somewhat similar to that of Petty Officers but without gilt buttons and with a different cap badge.

Chief Petty Officers wear a similar dress to Petty Officers but with differences in badges and buttons.

Men who change their uniform on confirmation as Petty Officer are paid a special gratuity to cover the cost.

Training on Entry

On entry, Boys for the Seaman, Signal and Telegraphist branches go to shore training establishments, such as H.M.S. *Ganges* at Shotley, near Harwich, and H.M.S. *St. Vincent* at Portsmouth, which are fully equipped and have large instructional staffs of officers and petty officers.

After about a year at one of these establishments, Boys are drafted to sea in the sea-going fleets as Boys 1st Class.

Specially intelligent Boys have the opportunity at the Training Establishments of passing into the Advanced Class and being given a special course of training intended to fit them for early advancement in the Service. Membership of the advanced class is not in itself a guarantee of promotion, but the advantages of taking this opportunity of getting a good education are obvious.

Apprentices for service in the Artificer branches undergo their training, which lasts between four and five years, at a special Mechanical Training Establishment at Chatham.

All other men on first entry are sent to one of the three Royal Naval Depots at Portsmouth, Chatham, and Devonport, where they undergo a period of training in discipline, naval routine, and the duties of their rating before being sent to sea.

Medical Attendance

Medical attendance and medicine are given free of charge; in cases requiring it, treatment in a Royal Naval Hospital is allowed, full pay being continued during treatment, and an extension of 28 days' pay being granted if and when a man is invalided out of the Service.

After the first 30 days' sickness, small deductions may be made from men's pay, but only when their sickness is the result of their own carelessness or misconduct.

Royal Fleet Reserve

Seamen, Stokers, and Royal Marines who have served creditably and have taken their discharge without a pension may, if in all respects fit and recommended for enrolment and if vacancies exist, join the Royal Fleet Reserve, and, subject to fulfilment of the conditions of service in the Reserve, draw a retainer of 3s. 6d. a week. Men whose efficiency is unimpaired, and who continue in all respects fit, may, subject to requirements, be permitted to re-enrol for successive periods of 5 years to complete 22 years' combined service in the Fleet and Reserve, provided that they are not over 50 years of age at the termination of the final period of re-enrolment. A gratuity of £75 in full discharge of all claims will be awarded to men on completion of 22 years' combined qualifying service in the Fleet and Reserve. In the event of a man's service in the Reserve being terminated by death or medical unfitness, from causes not due to his own imprudence or misconduct, before completion of time for the full gratuity, a gratuity may be granted at the rate of £2 for each year

of qualifying service in the Fleet and Reserve combined up to twelve, and £5 for each year afterwards. At the discretion of the Admiralty, a gratuity, at such reduced rate as may be thought fit, may be paid in respect of the services of men who are discharged medically unfit, or who die, from causes due to their own imprudence or misconduct, before they qualify for the full gratuity. Royal Fleet Reservists are required to drill for one week in every two years. Men are liable to be called into Active Service by Royal Proclamation in the event of a national emergency.

PART II—PAY AND PROSPECTS IN THE VARIOUS BRANCHES OF THE SERVICE

Special Note as Regards Pay

In addition to his rates of full pay as shown in the following pages, the naval rating receives the benefit of the following :

Kit Upkeep Allowance (in all cases).

Marriage Allowance (if married and over 25).

Good Conduct Pay (if earned—see page 6).

Leave Allowance (for periods of long leave) and, when specially qualified, he may also receive—

Non-substantive pay (*e.g.* for gunnery and torpedo specialists).

Extra pay is also granted for work under particular conditions, *e.g.* service in certain departments of the ship in the Tropics, in certain climates, in submarines, or in small craft, work in confined compartments, etc.

Seaman Class Boys

Boys are entered between the ages of 15 and 16½ for training as Seamen ; they must have the written consent of parent or guardian on the form provided by the Recruiting Officer.

PHYSICAL STANDARD

Age.		Height.		Chest
		ft. in.		Measurement.
				Inches.
15 and under	15½ 5 0 30½
15½	.. 16 5 0½ 31
16	.. 16½ 5 1 31½

Specially suitable boys of good physique and education are occasionally entered though slightly under the above physical measurements.

Candidates must be well educated. Eyesight, including colour vision, must be perfect.

Boys commence to count their 12 years' service from the age of 18, when they are usually rated Ordinary Seamen. Promising boys are selected for advancement to Ordinary Seamen as from the date of reaching the age of 17½ years, but this will not affect the period of their engagement or the time they will have to serve for pension.

SCALE OF PAY

				s.	d.	s.	d.	
Boy, 2nd Class	5	3			a week.
Boy, 1st Class	8	9			"
Ordinary Seaman	14	0			"
Able Seaman	21	0	to	25 8	"
Leading Seaman	30	4	to	32 8	"
Petty Officer	42	0	to	47 10	"
Chief Petty Officer	52	6	and	upwards.	"

Considerable additions to pay (ranging from 1s. 9d. to 28s. 0d. a week) can be earned by capable men for gunnery, torpedo, physical training and other qualifications; and substantial money prizes are given for good shooting.

Specialisation.—There are many forms of specialisation open to men of the Seaman branch. Specialisation is usually open to volunteers and carries extra pay. The following are examples:—

GUNNERY (men qualifying for such ratings as Seaman Gunner, Gunlayer and Gunner's Mate, which are held in addition to substantive rating).

TORPEDO (Seaman Torpedo Man, Leading Torpedo Man, Torpedo Gunner's Mate, etc. The Torpedo Branch deal with all sorts of electrical work in addition to torpedoes).

FLEET AIR ARM (Air Gunner and Observer's Mate are specialist air ratings, while all men in general service may find themselves part of the Fleet Air Arm complement of a Carrier).

ANTI-SUBMARINE WORK.

PHYSICAL AND RECREATIONAL TRAINING.

SUBMARINES.

PHOTOGRAPHY.

Seamen (Special Service)

Men between the ages of 17½ and 25 may enter as Seamen for Special Service. They will be required to engage for a period of 12 years, of which 7 years will be served in the Fleet. Men under 18 will be required to serve in the Fleet for 7 years from the age of 18, in addition to whatever period may be necessary before attaining that age. At the end of this period of Active Service they will be discharged and, if they are in all respects fit and recommended, will be enrolled in the Royal Fleet Reserve to complete a total of 12 years' Active and Reserve Service combined. After that they will be eligible for re-enrolment in the Reserve under the same conditions as Continuous Service men (see page 9).

Men entered for Special Service may transfer to Continuous Service. In order to be eligible to do this they must show sufficient promise and reach the physical standard required for Continuous Service.

PHYSICAL STANDARD

Age.	Height.	Chest.
Under 21	5 ft. 2 in.	32 in.
21 and over	5 ft. 3 in.	34 in.

Eyesight.—6/9 each eye, tested separately. Colour vision must be normal.

PAY

				s.	d.	s.	d.	
Ordinary Seaman	14	0			a week.
Able Seaman	17	6 to 22	2		..
Leading Seaman	26	10			..

Many of the additions to pay earned for special qualifications by Seamen entered as boys can also be obtained by Special Service Seamen.

Seaman Class Boys (Special Service)

Boys between the ages of $16\frac{1}{2}$ and $17\frac{1}{2}$ may enter as Boys 2nd Class for Special Service. Boys under 17 must have the written consent of parent or guardian on the form provided by the Recruiting Officer. They will be required to engage for a period of 12 years, and will serve in the Fleet up to the age of 25, when they will be enrolled in the Royal Fleet Reserve to complete their engagement under the same conditions as Special Service Seamen. They will also be allowed to transfer to Continuous Service under the rules applicable to Special Service Seamen.

PHYSICAL STANDARD

Height.	Chest.
5 ft. 1 in.	$31\frac{1}{2}$ in.
Eyesight.—6/9 each eye tested separately. Colour vision normal.	

PAY

				s.	d.	s.	d.	
Boy, 2nd Class	5	3			a week.
Boy, 1st Class	8	9			..
Ordinary Seaman	14	0			..
Able Seaman	17	6 to 22	2		..
Leading Seaman	26	10			..

Signal Branch

The Signal Branch of the Royal Navy is recruited, with the exception of men entered for Special Service, from Boys under training in the Harbour Training Establishments. Boys are selected for this Branch at the end of the preliminary training and undergo a special course of training. Signal Boys are usually rated Ordinary Signaller at the age of 18, but promising boys are specially rated as from the age of $17\frac{1}{2}$.

SCALE OF PAY

				s.	d.	s.	d.	
Signal Boy	8	9			a week.
Ordinary Signaller	14	0			..
Signaller	22	9 to 27	5		..
Leading Signaller	33	10 to 36	2		..
Yeoman of Signals	45	6 to 51	4		..
Chief Yeoman of Signals	56	0 and upwards.			..

Extra pay of from 1s. 2d. to 7s. a week is earned by all qualified men according to their technical ability, and there are opportunities for earning up to 28s. a week extra in the Fleet Air Arm.

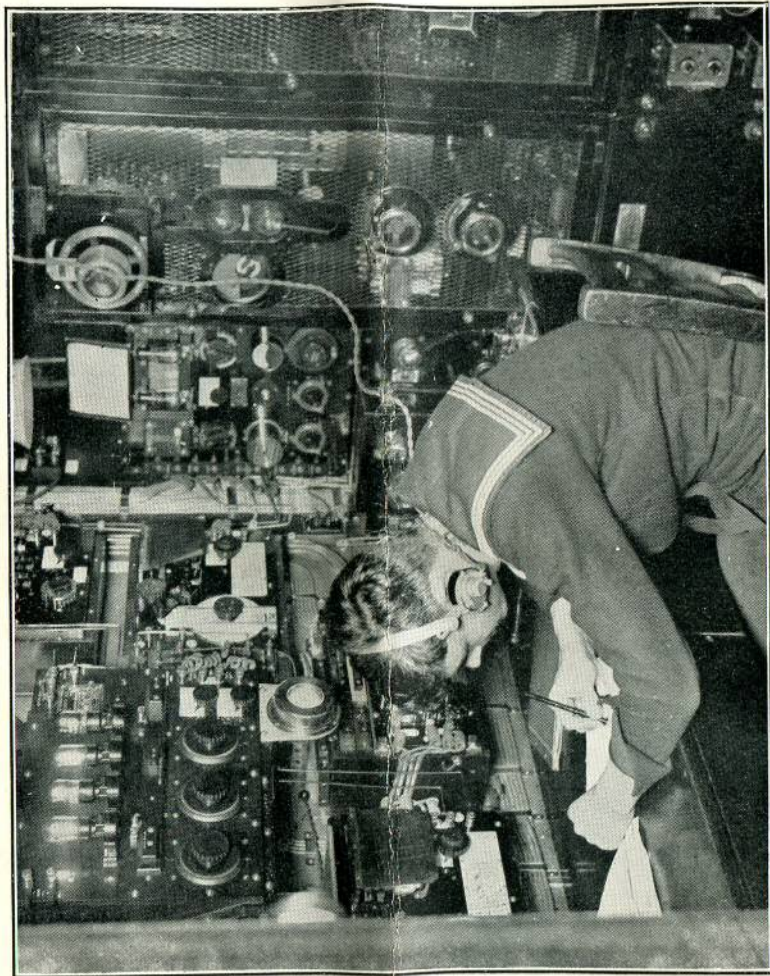
Signalmen (Special Service)

Men between the ages of $17\frac{1}{2}$ and 23 may enter as Signalmen for Special Service. They will be required to engage for a period of 12 years under the same conditions as Special Service Seamen (see page 11). They will be allowed to transfer to Continuous Service under the general rules applicable to Special Service Seamen.



[Photo by The "Topical" Press Agency, Ltd.

VISITORS' DAY



[Photo by Central Press Photos, Ltd.

RECEIVING A MESSAGE BY WIRELESS

Physical Standard.—As for Seamen (Special Service), (see page 11).
Eyesight.—Full normal vision, including colour vision, is required.

PAY				s.	d.	s.	d.
Ordinary Signalman	14	0		a week.
Signalman	19	3 to 23	11	..
Leading Signalman	30	4		..

Extra pay may be earned by qualified men according to their technical ability.

Wireless Telegraphy Branch

This Branch is recruited, with the exception of men entered for Special Service, from Seamen Class Boys under training in the Harbour Training Establishments.

Boys are selected for the Branch at the end of the preliminary training in these establishments, and, on selection, undergo a special course of training. Boy Telegraphists are usually rated Ordinary Telegraphist at the age of 18, but promising boys are specially rated as from the age of 17½.

SCALE OF PAY				s.	d.	s.	d.
Boy Telegraphist	8	9		a week.
Ordinary Telegraphist	14	0		..
Telegraphist	22	9 to 27	5	..
Leading Telegraphist	33	10 to 36	2	..
Petty Officer Telegraphist	45	6 to 51	4	..
Chief Petty Officer Telegraphist	56	0 and upwards.		..

Extra pay of from 1s. 2d. to 7s. a week is earned by all fully qualified men, according to their technical ability, and there are opportunities for earning up to 28s. 0d. a week extra in the Fleet Air Arm.

Telegraphists (Special Service)

Men between the ages of 17½ and 23 may enter as Telegraphists for Special Service. They will be required to engage for a period of 12 years, under the same conditions as Special Service Seamen (see page 11). They will be allowed to transfer to Continuous Service under the general rules applicable to Special Service Seamen.

Physical Standard.—As for Seamen (Special Service), (see page 11).
Eyesight.—6/9 better eye, 6/12 the other.

PAY				s.	d.	s.	d.
Ordinary Telegraphist	14	0		a week.
Telegraphist	19	3 to 23	11	..
Leading Telegraphist	30	4		..

Extra pay may be earned by qualified men according to their technical ability.

Stokers (Continuous Service)

Candidates must be able-bodied men, but no previous experience is necessary.

Age.—18 to 25 years.

Physical Standard.—As for Seamen (Special Service), (see page 11).

Eyesight.—6/9 each eye, tested separately.

PAY

			s.	d.	s.	d.	
Stoker, 2nd Class on entry	17	6			a week.
Stoker, 1st Class	24	6 to 29	2		..
Leading Stoker	33	10 to 36	2		..
Stoker Petty Officer	45	6 to 51	4		..
Chief Stoker	56	0			and upwards a week.

Extra pay is given when serving in the Tropics ; also (whilst doing the duty) to Chief Stokers and Stoker Petty Officers employed as Yeomen of Stores ; and to Stoker Ratings employed as Engineers' Writer.

Training and Advancement.—All men of the Stoker Class will be instructed in the use of simple tools, as well as in the performance of stokehold duties. They will be eligible later for advancement in vacancies to Leading Stoker, Stoker Petty Officer and Chief Stoker, subject to their possessing the prescribed qualifications.

Mechanicians.—A limited number of Stokers who display special intelligence and mechanical ability will be noted as suitable candidates to qualify later for Mechanician. They will be specially rated up, and if they then continue to be recommended for advancement, they will be eligible for a course of instruction for the rating of Mechanician. The instruction will comprise Fitters' and Turners' work, a knowledge of the construction and working of Engines and Boilers, and general educational subjects. Those who pass the examination at the close of this course will be sent to sea with the rating of Mechanician, 2nd Class. They will be promoted to Mechanician, 1st Class, after from six to eighteen months' satisfactory service, according to the class of Certificate that they hold.

The rates of pay of Mechanicians are :

			s.	d.	s.	d.	
Mechanician, 2nd Class	52	6			a week.
Mechanician, 1st Class	56	0 to 70	0		..

Mechanicians, 1st Class, with over six years' service as Mechanician, 2nd and 1st Class (including three years afloat), are eligible for advancement in vacancies to Chief Mechanician, 2nd Class, with pay at 73s. 6d. a week, and subsequently, after six years' service, to Chief Mechanician, 1st Class, at 80s. 6d. a week.

Mechanicians, 2nd Class, rank as Petty Officers, and Mechanicians, 1st Class, and Chief Mechanicians as Chief Petty Officers.

Senior Engineers' Allowance of 1s. 0d. a day may be earned in certain circumstances by Chief Mechanicians and Mechanicians.

The Artificer Branches

The Artificer branches of the Royal Navy (Engine-room Artificers, Electrical Artificers, and Ordnance Artificers) offer special opportunities to boys and men of good education and mechanical aptitude.

The work is skilled and responsible and high rates of pay are reached at an early age.

The prospects of promotion to Officer rank are good, especially for boys entered as Apprentices in the Mechanical Training Establishment.

Men in these branches spend most of their service in the rating of Chief Petty Officer, which carries with it many privileges, including that of messing together in separate mess rooms.

The long period of training in the Mechanical Training Establishment is a very valuable supplement to a general education, with exceptional opportunities of physical development and technical instruction.

Engine-room Artificers (Direct Entry)

Candidates must be competent workmen at one of the following trades:—Engine Fitter, Engine Fitter and Turner, Coppersmith, Boilermaker, Engine Smith. Occasionally a few Pattern Makers and Moulders are entered.

Age.—21 to 28 years.

PHYSICAL STANDARD

Height.	Chest.
5 ft. 3 in.	34 in.

Eyesight.—6/9 both eyes together, worse eye not less than 6/18.

SUBJECTS OF EXAMINATION

Educational.—To read and write, and work the first four rules of arithmetic, simple and compound, vulgar and decimal fractions, and simple interest.

Practical.—To be generally acquainted with the names and uses of the different parts of a marine engine and boiler; understand the use and management of the steam and water gauges and other boiler mountings; know how to test the density and height of water in the boiler; understand the nature and cause of priming, and know what should be done in the event of water passing into the cylinders; know how to act in the event of a bearing becoming heated, and on the occurrence of any of the ordinary casualties of an engine-room.

Coppersmiths, Engine Smiths and Boilermakers not fully acquainted with the construction and working of the marine engine may be accepted if otherwise qualified and able to work well at their respective trades.

A candidate who holds a Board of Trade Certificate as 1st Class or 2nd Class Engineer, and can produce properly attested Certificates of character and ability from the Works in which he has learnt his trade, and from the Officers of the Ships in which he has served, may be entered without any further professional examination.

Engine-room Artificers on entry are expected to equip themselves with a minimum set of tools at their own expense in accordance with the general custom of their respective trades.

Pay and Position.—Engine-room Artificers are usually entered as Acting Engine-room Artificer, 4th Class, and rank as Petty Officers, a position that carries with it many privileges.

On advancement to the rating of Engine-room Artificer, 3rd Class, or above, they rank as Chief Petty Officers.

Pay 56s. to 70s. a week.

An allowance of 7s. a week is paid to men obtaining a certificate of capability of taking a watch in the engine-room of a small ship.

After 6 years' approved service, including 3 years' service afloat, and if qualified by examination, they become eligible for advancement in vacancies to the rating of Chief Engine-room Artificer, 2nd Class, and subsequently after 6 years to Chief Engine-room Artificer, 1st Class, with the following rates of pay:—

	<i>s.</i>	<i>d.</i>	
Chief Engine-room Artificer, 2nd Class ..	73	6	} a week.
Chief Engine-room Artificer, 1st Class ..	80	6	

A further allowance of 7*s.* a week is paid to Chief Engine-room Artificers holding a certificate of capability of taking charge of the engines of a small ship, and allowances as Senior Engineer, and for charge of machinery, may be earned in certain circumstances.

Engine-room Artificers, 5th Class

Candidates between the ages of 19½ and 21 years may be entered as Engine-room Artificers, 5th Class, under the following conditions :—

PHYSICAL STANDARD

Height.	Chest.
5 ft. 2 in.	32 in.

Trade Qualifications.—Fitter and Turner, Fitter, Boilermaker, Coppersmith or Engine Smith.

Educational Qualification.—As for Acting E.R.A., 4th Class, direct entry.

Practical.—Candidates will be accepted only if they attain a standard which makes it clear that they will be suitable for the rating of Acting E.R.A., 4th Class, after not less than 12 months and not more than 18 months' service as E.R.A., 5th Class.

Pay.—39*s.* 1*d.* a week.

Advancement to Acting E.R.A., 4th Class, will be made by the Commanding Officer, if recommended by the Engineer Officer, after completion of 12 months' service as E.R.A., 5th Class. Their position subsequently will be the same as that of candidates who enter as Acting E.R.A., 4th Class.

Entry of Engine-room Artificer Apprentices

A limited number of candidates for training for the rating of Engine-room Artificer in the Royal Navy will be entered twice a year, in January and August, on the results of examinations held in the preceding October and April respectively.

Candidates for examination in October *must* be between the ages of 15 and 16 years on the 1st January following, and candidates for examination in April *must* be between the ages of 15 and 16 on the 1st May following. No exceptions to these rules are allowed. Whilst under training they are paid 5*s.* 3*d.* to 14*s.* a week.

Successful candidates will be examined by a Naval Medical Officer to see that they come up to the physical standard required of candidates for the Royal Navy in every respect. Approximately normal vision is required for entry as Apprentice.

Before being accepted, they have to enter into an engagement to serve with the Fleet for 12 years from the age of 18.

At the expiration of the course of training, and after passing the required examination, they will be rated Engine-room Artificer, 5th Class (leading rate), and will be paid at 39*s.* 1*d.* a week.

An Engine-room Artificer, 5th Class, may be recommended for

(See pages 15 to 16 of the "Royal Navy as a Career.")

PAY OF ENGINE ROOM ARTIFICERS IN THE ROYAL NAVY.

Anticipated emoluments for a Reasonably Successful Career.

Age.	Rating.	Promotion, allowances, etc., Increments.	Total Weekly emoluments.
			s. d.
21	P.O.	Entry as Acting Engine Room Artificer IVth Class, 56s.	56 0
23	C.P.O.	Granted Engine Room Watchkeeping certificate, 7s. and C.P.O. Rating	63 0
24	C.P.O.	Rated E.R.A. IIIrd Class, + 7s. Awarded 1st Good Conduct Badge, + 1s. 9d.	71 9
25	C.P.O.	Married and granted Marriage allowance, + 10s.	81 9
26	C.P.O.	First child born—Marriage allowance increased to 15s.	86 9
28	C.P.O.	Rated E.R.A. IIInd Class, + 3s. 6d.	90 3
29	C.P.O.	Awarded 2nd Good Conduct Badge, + 1s. 9d.	92 0
30	C.P.O.	Second child born—Marriage allowance increased to 18s.	95 0
33	C.P.O.	Re-engages for Pension—Rated E.R.A. 1st Class, + 3s. 6d.	98 6
34	C.P.O.	Rated C.E.R.A. IIInd Class, + 3s. 6d.—Granted E.R. Charge certificate, + 7s. Awarded 3rd Good Conduct Badge, + 1s. 9d.	110 9
36	C.P.O.	Awarded Long Service and Good Conduct Medal and Gratuity of £20	—
40	C.P.O.	Rated C.E.R.A. 1st Class, 7s.	117 9
43	C.P.O.	Discharged to Pension (approx. £87 per annum)	—

Excellent prospects exist for promotion to Warrant Engineer for the right type—such promotion being by competitive examination and recommendation. The average age for promotion to Warrant Engineer is 32 and the pay rises by stages through the rank of Commissioned Engineer to approximately £9 a week in the rank of Lieutenant (E) which can be attained at about 46.

Warrant Officers and Commissioned Officers from Warrant Rank may serve on the Active List till the age of 50 when they retire with Retired pay varying from £100 to a sum of £270 for those that attain Lieutenant's Rank.

advancement to Acting Engine-room Artificer, 4th Class, after attaining 1 year's seniority, or earlier in special cases.

A limited number (not exceeding two a year) of specially selected Artificer Apprentices on completion of 2 years' service in the Training Establishment will be promoted to Naval Cadet and appointed to the sea-going training cruiser for 1 year's training before joining the Royal Naval Engineering College at Keyham as Midshipmen (E), to undergo a course of instruction with a view to becoming Officers of the Engineering Branch.

Full particulars of the method of entry and conditions of service may be obtained on application to the Secretary of the Admiralty, London, S.W.1.

Electrical Artificers

ACTING ELECTRICAL ARTIFICERS, 4TH CLASS

Candidates for entry as Acting Electrical Artificers, 4th Class, must be thoroughly efficient Fitters, or Fitters and Turners, or Instrument Makers, with at least 5 years' practical experience as such.

Age.—21 to 28 years.

PHYSICAL STANDARD

Height.	Chest.
5 ft. 3 in.	34 in.

Eyesight.—6/12 both eyes together, worse eye not less than 6/24.

Nature of Examination

Educational.—As for Engine-room Artificers (see page 15).

Practical.—A practical examination in Fitting, or Fitting and Turning or Instrument Making, details of which can be obtained from any Recruiting Officer.

Electrical Artificers on entry are expected to equip themselves with a minimum set of tools at their own expense in accordance with the general custom of their respective trades.

Pay and Position.—Electrical Artificers entered above 5th Class (see below) rank as Petty Officers, a position which carries with it many privileges. On advancement to the rating of Electrical Artificer, 3rd Class, or above, they rank as Chief Petty Officers.

As Electrical Artificer

Pay 56s. 0d. to 70s. 0d. a week.

After 6 years' approved service, of which three must have been actually afloat, and if qualified by examination, they become eligible for advancement in vacancies to Chief Electrical Artificer, 2nd Class, and subsequently after 6 years to Chief Electrical Artificer, 1st Class.

As Chief Electrical Artificer

Chief Electrical Artificer, 2nd Class	..	s.	d.	} a week.
		73	6	
Chief Electrical Artificer, 1st Class	..	80	6	

ELECTRICAL ARTIFICERS, 5TH CLASS

Candidates between the ages of 19½ and 21 years may be entered as Electrical Artificer, 5th Class, under the following conditions:—

Qualifications.—Must be able-bodied men with at least 3 years' experience as Fitter, or Fitter and Turner, or Instrument Maker, and be able to pass the required Educational and Trade Tests.

Physical Standard.—As for Engine-room Artificer, 5th Class (see page 16).

Educational Test.—As for Engine-room Artificers (see page 15).

Practical Test.—Practical examination in Fitting, or Fitting and Turning or Instrument Making.

Pay 39s. 1d. per week.

At the age of 21, or, in certain circumstances, 20½, Electrical Artificers, 5th Class, are eligible for advancement to Acting Electrical Artificer, 4th Class, provided they have finished their training and are recommended. Their position subsequently will be the same as that of candidates who enter as Acting Electrical Artificer, 4th Class.

For promotion to Warrant rank and above, see page 27.

ENTRY OF ELECTRICAL ARTIFICER APPRENTICES

A limited number of candidates for training for the rating of Electrical Artificer will be entered for examination twice a year, under the same conditions as Engine-room Artificer Apprentices (see page 16).

Full particulars may be obtained on application to the Secretary of the Admiralty, London, S.W.1.

Ordnance Artificers

Ordnance Artificers are employed in the upkeep of all guns and gun mountings, hydraulic machinery, gun sighting and fire control instruments; this includes clockwork, electrical and optical work, and general ordnance work.

ACTING ORDNANCE ARTIFICERS, 4TH CLASS

Candidates for entry as Acting Ordnance Artificers, 4th Class, must be thoroughly efficient Fitters or Fitters and Turners with at least 5 years' practical experience as such.

Age.—21 to 28 years.

PHYSICAL STANDARD

Height.	Chest.
5 ft. 3 in.	34 in.

Eyesight.—6/12 both eyes together, worse eye not less than 6/24.

Nature of Examination

Educational.—As for Engine-room Artificers (see page 15).

Practical.—A practical examination in Fitting or Fitting and Turning, including Screw-cutting, details of which can be obtained from any Recruiting Officer.

Ordnance Artificers on entry are expected to equip themselves with a minimum set of tools at their own expense in accordance with the general custom of their trade.

Pay, Position and Promotion

As for Electrical Artificers (see page 17).

Ordnance Artificers, 5th Class

Candidates between the ages of 19½ and 21 years may be entered as Ordnance Artificer, 5th Class, under the following conditions:—

Qualifications.—Must be able-bodied men of good character with at least 3 years' experience as Fitter, or Fitter and Turner.

Physical Standard.—As for Engine-room Artificer, 5th Class (see page 16).

Educational Test.—As for Engine-room Artificers (see page 15).

Practical Test.—Practical examination in Fitting or Fitting and turning; must show promise of making an efficient Acting Ordnance Artificer, 4th Class, on reaching age of 21. On advancement to Acting Ordnance Artificer, 4th Class, after passing the prescribed examinations, their position will be the same as that of candidates who enter as Acting Ordnance Artificer, 4th Class.

Pay 39s. 1d. per week.

ENTRY OF ORDNANCE ARTIFICER APPRENTICES

A limited number of candidates for training for the rating of Ordnance Artificer will be entered for examination twice a year, under the same conditions as Engine-room Artificer Apprentices (see page 16).

Full particulars may be obtained on application to the Secretary of the Admiralty, London, S.W.1.

Shipwrights

Candidates must be competent workmen.

Age.—19 to 28 years.

Physical Standard.—As for Seamen (Special Service), (see page 11).

Eyesight.—6/12 both eyes together, worse eye not less than 6/24.

Nature of Examination

Educational.—As for Acting Engine-room Artificer, 4th Class (see page 15).

Practical.—To possess a knowledge of wood, iron, and steel ship-building, and to be capable of using the ordinary tools for each efficiently. To know the different parts of a boat and how to repair them.

Candidates under 21 are entered as Shipwrights, 5th Class (leading rates); candidates over 21 as Acting Shipwrights, 4th Class (Petty Officers). On advancement to the rating of Shipwright, 3rd Class, they rank as Chief Petty Officers.

Shipwrights, 5th Class, may, if recommended, be rated Acting Shipwrights, 4th Class, after 1 year's service or on reaching the age of 21.

Shipwrights on entry are expected to equip themselves with a minimum set of tools at their own expense in accordance with the general custom of their trade.

		PAY				
		s.	d.	s.	d.	
Shipwright, 5th Class	39	1			} a week.
Acting Shipwright, 4th Class	56	0			
Rising, if recommended, and of satisfactory character, to—						
Shipwright, 1st Class	70	0			
Shipwrights are eligible for advancement in vacancies to Chief Shipwright with pay at	73	6 to 80	6	6	

Service of Shipwrights in Dockyards.—Naval Shipwrights will be eligible for employment on the hired list of Dockyard Shipwrights on discharge from the Royal Navy after completing time for Naval Pension, subject to their being found efficient and physically fit by the Dockyard authorities, and to the existence of vacancies.

ENTRY OF NAVAL SHIPWRIGHT APPRENTICES

Boys after passing successfully the Civil Service Educational Examination for Dockyard Apprentice, candidates for which *must* be between the ages of 15 and 16 years on the 1st day of August in the year in which they are examined, are eligible for entry in the Royal Navy for training in Dockyards as Naval Shipwright Apprentices, and, provided they are found medically fit for the Royal Navy, will be allowed to enter as such according to the position they occupy on the Examination List. Before being accepted they have to enter into an engagement to serve in the Fleet for 12 years from the age of 18. Whilst under training they will receive pay at the rates laid down for Dockyard Apprentices.

Successful candidates will be examined by a Naval Medical Officer to see that they come up to the physical standard required of candidates for the Royal Navy in every respect. Approximately normal vision is required for entry as Apprentice.

Full particulars may be obtained on application to the Secretary of the Admiralty, London, S.W.1.

For promotion to Warrant rank and above, see page 27.

Naval Artificer Apprentices

In addition to the normal entry of Artificer Apprentices for training in the Mechanical Training Establishment at Chatham, a limited number of Naval Artificer Apprentices will be entered annually for training as Engine-room, Electrical, and Ordnance Artificers. They will be trained in the Dockyards in the same way as Dockyard Apprentices, and their pay and conditions of service for the first four years will be the same as for Dockyard Apprentices. After 4 years they will be drafted to sea as Artificers, 5th Class, to complete their training.

Before being accepted they must be found medically fit for the Royal Navy, and enter into an engagement to serve in the Fleet for 12 years from the age of 18.

Full particulars may be obtained on application to the Secretary of the Admiralty, London, S.W.1.

Blacksmiths

Candidates must be good workmen at their trade.

Age.—19 to 28 years.

Physical Standard.—As for Seamen (Special Service), (see page 11).

Eyesight.—6/12 both eyes together, worse eye not less than 6/24

Nature of Examination

Educational.—(a) Writing an ordinary passage of English at dictation.

(b) A simple paper on the first four rules in arithmetic, simple and compound.

Practical.—Must be able to make a three-eyed hoop of at least 5 inches in diameter, an elbow funnel of steel plate of at least 6 inches in diameter, to fit stud in cable links, and to have a general knowledge of cable work.

Candidates under 21 years of age are entered as Blacksmiths, 5th Class; candidates over 21, as Acting Blacksmiths, 4th Class (leading rates in each case). On advancement to the rating of Blacksmith, 3rd Class, they rank as Petty Officers, and on advancement to the rating of Chief Blacksmith, as Chief Petty Officers.

Blacksmiths on entry are expected to equip themselves with a minimum set of tools at their own expense in accordance with the general custom of their trade.

		PAY		s. d.		s. d.		
Blacksmith, 5th Class	32	1			} a week.
Blacksmith, 4th Class	43	9			
Rising to								
Blacksmith, 1st Class	54	10 to 57	2		
and								
Chief Blacksmith	63	0 to 70	0		

Joiners

Candidates must be good workmen at their trade.

Age.—19 to 28 years.

Physical Standard.—As for Seamen (Special Service), (see page 11).

Nature of Examination

Educational.—As for Blacksmiths.

Practical.—Must be able to do Joiner's work, such as dove-tailing, panelling and sash-making, and possess a thorough working knowledge of ship's carpentry and joinery (including the repair and polishing of furniture and cabin fittings).

The examination includes a practical test of the candidate's ability to use the tools of his trade properly.

Candidates under 21 years of age are entered as Joiners, 5th Class; candidates over 21 as Acting Joiners, 4th Class (leading rates in each case). On advancement to the rating of Joiner, 3rd Class, they rank as Petty Officers, and on advancement to the rating of Chief Joiner, as Chief Petty Officers.

Joiners on entry are expected to equip themselves with a minimum

set of tools at their own expense in accordance with the general custom of their trade.

				PAY			
				s.	d.	s.	d.
Joiner, 5th Class	30	4	} a week.
Joiner, 4th Class	42	0	
Rising to							
Joiner, 1st Class	53	1 to 55	
and							
Chief Joiner	61	3 to 68	3

Painters

Candidates must be good workmen at their trade.

Age.—19 to 28 years.

Physical Standard.—As for Seamen (Special Service), (see page 11).

Nature of Examination

Educational.—As for Blacksmiths.

Practical.—Must be competent to undertake: Plain painting work; mixing paint of different colours and shades; painting a door with white enamel; staining and varnishing in imitation of different sorts of woods; graining and varnishing in imitation of pine and oak; marbling, white, black, and gold sienna; writing with paint in block and roman letters, italics and figures; glass-cutting of different shapes; calculating the proportion of paint required for a given surface; to be able to answer questions relative to the proportion of oils, turpentine and dryers which should be used for mixing a given quantity of the various descriptions of the paints in general use on board ship; to possess a knowledge of the preparation of the surfaces of wood and steel to receive paints and enamels.

Candidates under 21 years of age are entered as Painters, 5th Class; candidates over 21 as Acting Painters, 4th Class (leading rates in each case). On advancement to the rating of Painter, 3rd Class, they rank as Petty Officers, and on advancement to the rating of Chief Painter, as Chief Petty Officers.

Painters on entry are expected to equip themselves with a minimum set of tools at their own expense in accordance with the general custom of their trade.

Pay.—As for Joiners (see above).

Plumbers

Candidates must be good workmen at their trade.

Age.—19 to 28 years.

Physical Standard.—As for Seamen (Special Service), (see page 11).

Nature of Examination

Educational.—As for Blacksmiths.

Practical.—Must be able to work up a corner in sheet lead of at least 3 inches; wipe a joint on a pipe of not less than 2 inches in diameter both horizontally and vertically; and make a straight length and an elbow of copper stove-funnelling of 6 inches in diameter.

Note.—Preference is given to men who possess some knowledge of working in tin, brass, and copper.

Candidates under 21 years of age are entered as Plumbers, 5th Class ; candidates over 21 as Acting Plumbers, 4th Class (leading rates in each case). On advancement to the rating of Plumber, 3rd Class, they rank as Petty Officers, and on advancement to the rating of Chief Plumber, as Chief Petty Officers.

Plumbers on entry are expected to equip themselves with a minimum set of tools at their own expense in accordance with the general custom of their trade.

Pay.—As for Joiners (see page 22).

Sick Berth Staff

Candidates for training in this Branch must be intelligent men between the ages of 18 and 25 years.

Physical Standard.—As for Seamen (Special Service), (see page 11).

Eyesight.—6/12 each eye, tested separately.

Nature of Examination

Reading, writing, and a fair knowledge of arithmetic (simple rules, simple money sums, weights and measures, and a knowledge of decimals, proportion, and percentages).

Accepted candidates are entered as Sick Berth Attendant Probationers, and given a course of instruction at a Royal Naval Hospital, those approved of being advanced to Sick Berth Attendant.

A free outfit is given, a portion being supplied on entry and the remainder on successfully passing the period of probation.

PAY

		<i>s.</i>	<i>d.</i>	<i>s.</i>	<i>d.</i>	
Sick Berth Attendant Probationer	14	0			
Sick Berth Attendant	22	9 to 27	5		} a week.
Leading Sick Berth Attendant	33	10 to 36	2		
Sick Berth Petty Officer	45	6 to 51	4		
Sick Berth Chief Petty Officer	56	0 and			

Allowances are also granted, as follows, to those who qualify themselves by examination :

				<i>d.</i>
As X-Ray Assistants	6 a day.
As Operating Room Assistants	6 "
As Laboratory Assistants	6 "
As Masseurs	6 "
On duty in Zymotic Wards	6 "
On duty in Lunatic Wards	6 "
On duty Dispensing	2 "

Writer and Supply Branches

Candidates for entry in these Branches must be between the ages of 18 and 23 years. They are required to pass a medical examination, which is not so stringent as that for other Branches of the Service.

Physical Standard.—As for Seamen (Special Service), (see page 11).
Eyesight.—6/12 each eye, tested separately. The wearing of glasses is not necessarily a bar to entry in these ratings.

		PAY			
		s.	d.	s.	d.
Writer and Supply Probationer	17	6		
Writer and Supply Assistant	24	6 to 29	2	
Leading Writer and Leading Supply Assistant	35	7 to 37	11	
Petty Officer Writer and Supply Petty Officer	47	3 to 53	1	
Chief Petty Officer Writer and Supply Chief Petty Officer	57	9 and		

} a week.
upwards.

Duties of Writers and Supply Ratings

The duties of Writers include keeping accounts, rendering returns, correspondence, etc., and those of the Supply Branch relate to store-keeping, victualling and clothing of men, and the keeping of accounts in connection with such transactions.

A limited number of Writer ratings who are competent shorthand-typists are eligible for extra pay at the following rates after passing a qualifying examination:—

		s.		d.	
Lower grade	5	3	a	week.
Higher grade	10	6		„

In addition, extra pay is allowed for shorthand work at Courts Martial, etc.

Candidates are entered by examination, the subjects of which are:

English (including spelling, handwriting, and composition), and Arithmetic.

The syllabus of the examination in Arithmetic is as follows:—

Addition of sums of money ("tots").

The first four rules of arithmetic, simple and compound, vulgar and decimal fractions.

Making out invoices, etc.

Ratio, Proportion, Averages, Percentages.

Practice.

Simple Interest.

Credit will also be given for general smartness and knowledge as tested in conversation.

Candidates for entry as Writer Probationer are awarded marks for proficiency in Shorthand.

Marks are awarded to candidates for entry as Writer or Supply Probationer who produce a certificate of efficiency in Typewriting from a competent educational authority, such as Pitman's or Clark's College, or testimonials from employers by whom they have been employed as typists, stating the periods of such employment and their efficiency as typists.

Physical Standard.—As for Seamen (Special Service), (see page 11).
Eyesight.—6/12 each eye, tested separately. The wearing of glasses is not necessarily a bar to entry in these ratings.

	PAY	s.		d.		
Writer and Supply Probationer	17	6				} a week.
Writer and Supply Assistant	24	6 to 29		2		
Leading Writer and Leading Supply Assistant	35	7 to 37		11		
Petty Officer Writer and Supply Petty Officer	47	3 to 53		1		
Chief Petty Officer Writer and Supply Chief Petty Officer	57	9 and				
					upwards.	

Duties of Writers and Supply Ratings

... include keeping accounts, rendering returns,

THE ROYAL NAVY AS A CAREER.

PAGE 24—Amend paragraph as to Eyesight Standard to read as follows:—

The wearing of glasses is not necessarily a bar to entry in these ratings provided that, without glasses, the candidate is able to read Snellen 6/12 with each eye tested separately and, for near work, Snellen D. = 0.6 (Jaeger, 2) with each eye separately.

[4/37] (399/537)g Wt.14556—6942 10x 6/37 H & S, Ltd. Sp. 399 (462)

English (including spelling, handwriting,
 Arithmetic.

The syllabus of the examination in Arithmetic is as follows:—

Addition of sums of money ("tots").

The first four rules of arithmetic, simple and compound, vulgar and decimal fractions.

Making out invoices, etc.

Ratio, Proportion, Averages, Percentages.

Practice.

Simple Interest.

Credit will also be given for general smartness and knowledge as tested in conversation.

Candidates for entry as Writer Probationer are awarded marks for proficiency in Shorthand.

Marks are awarded to candidates for entry as Writer or Supply Probationer who produce a certificate of efficiency in Typewriting from a competent educational authority, such as Pitman's or Clark's College, or testimonials from employers by whom they have been employed as typists, stating the periods of such employment and their efficiency as typists.

Instructions as to Examinations, when held

Applicants before being accepted as candidates are required to produce a Certificate of Birth, evidence of previous employment, if any, and three satisfactory up-to-date references as to character.

Examinations are usually held in March, July and November. The actual date and place of an examination are announced shortly beforehand in the public press. Intending candidates should, when such an announcement appears, apply personally or by letter to the nearest R.N. Recruiting Office, or by letter to the Commodore, R.N. Barracks, at Chatham, Portsmouth, or Devonport, or the Commanding Officer, H.M.S. *Greenwich*, Rosyth, for particulars and application forms.

Candidates must be medically examined at the Royal Naval Barracks, Portsmouth, Devonport, or Chatham, or at Rosyth (H.M.S. *Greenwich*), or at the Royal Naval and Royal Marine Recruiting Office, London, Birmingham, Bristol, Derby, Glasgow, Liverpool, Manchester, Newcastle-on-Tyne, or Southampton, prior to the date of the examination.

Specimen examination papers are not published, and cannot therefore be supplied to intending candidates.

When applying, candidates should state whether they desire entry as Writer or Supply Probationer. Compliance with the wish of any candidate will, however, depend on the number of appointments made in each rating and at each port; and also on the qualifications shown by the candidate in the examination.

Cooks**I. CONTINUOUS SERVICE**

Men with aptitude for cooking and baking, who are educationally fit, are entered on probation as Assistant Cooks for training. If found fit after their period of training they are confirmed in the rating and are then selected according to (a) requirements, (b) suitability, (c) preference for specialisation as Cooks for ships' galleys and bakeries or as Cooks for Officers' galleys.

Age.—18 to 23 years.

Physical Standard.—As for Seamen (Special Service), (see page 11).

Eyesight.—6/12 each eye, tested separately.

Nature of Examination

Must be able to read and write and possess a knowledge of arithmetic (first four rules, simple; money, addition and subtraction only).

					PAY			
					<i>s.</i>	<i>d.</i>	<i>s.</i>	<i>d.</i>
Assistant Cook	14	0		
Cook	22	9 to 27	5	} a week.
Leading Cook	33	10 to 36	2	
Petty Officer Cook	45	6 to 51	4	
Chief Petty Officer Cook	56	0 and		
								upwards.

II. NON-CONTINUOUS SERVICE

Men between the ages of 18 and 30 are entered for non-continuous service as Assistant Cooks for service in officers' galleys. Men over

(See pages 23 to 25 of the "Royal Navy as a Career.")

ROYAL NAVY. ACCOUNTANT BRANCH.

Writer and Supply ratings.

RATES OF PAY.

The rates of pay given on page 24 are the basic rates of pay. They do not include such as the following:—

Awards for Good Conduct—page 6.

Marriage and Children's Allowances—page 7.

Kit Upkeep Allowance—page 8 ("Uniform").

The general position as regards pay is summarised on page 10 (Part II—"Special Note as regards Pay").

The following are examples of what an average intelligent man might expect to get. (Kit Upkeep Allowance is not included, as it may be taken it is expended for its proper purpose—but it must then be remembered there are no deductions to be made from pay for clothing.)

	Per week.	Per week.
	<i>s. d.</i>	<i>s. d.</i>
Enters at 19. Unmarried—		
Probationer	17	6
At 20. Unmarried—		
Writer or Supply Assistant	24	6
Gets Leading rate at 23. Married at 26—		
Leading rate over 3 years	37	11
1 G.C.B.	1	9
Marriage allowance	10	0
}		49 8
Gets P.O. rate at 28. Married and 1 child—		
P.O. rate	47	3
2 G.C.B.	3	6
Marriage, and children's allowance	15	0
}		65 9
At, say, 34, is a C.P.O. with 3 badges, with 2 children—		
C.P.O. rate	57	9
3 G.C.B.	5	3
Marriage, and children's allowance	18	0
}		81 0
On going to pension at 41, he will be getting—		
C.P.O. rate	64	9
3 G.C.B.	5	3
Marriage and 3 children	20	0
}		90 0

A Writer, in addition, may be getting shorthand-typist allowance, (Page 24.)

WARRANT RANK.

Attention is invited to pages 27 and 28. A limited number (at present about seven per cent.) gain promotion to Warrant rank. This is probably at the age of about 38. The man then ceases to become eligible for his pension as a rating but is instead not required to retire until he is 50. His rate of pay as a Warrant Officer may then advance gradually up to about £8 a week. Retired pay varies from £100 to £270 according to the rank gained.

30 years of age are permitted to enter in special cases with prior Admiralty sanction.

Candidates sign an engagement to serve for 5 years provided their services are so long required. They are liable to discharge at any time for unsuitability, or on the paying off of their ships. Under certain conditions, however, men recommended on paying off, etc., who sign a new non-continuous service engagement and undertake to accept whatever Naval employment is found for them, may be borne on Depot books (with pay) for a limited period to await re-employment. They must accept no private shore engagement while so borne.

A register is kept at each Home Port of the names of non-continuous service Officers' Cooks who have already served in the Navy in case their further services may be desired.

The conditions of pay, etc., for Officers' Cooks (non-continuous service) are generally similar to those for continuous service.

Officers' Stewards

I. CONTINUOUS SERVICE

Boys between the ages of 16 and 18 and men between the ages of 18 and 25 are entered for service as Stewards of Officers' Messes or as personal servants to Officers.

Physical Standard.—As for Seamen (Special Service), (see page 11).

Eyesight.—6/12 each eye, tested separately. The wearing of glasses is not necessarily a bar to entry in this rating.

Candidates sign an engagement to serve for 12 years from the age of 18 or from date of entry if over 18 provided their services are so long required.

		PAY		s. d.		s. d.	
Boy Steward (under 18)	8	9	} a week.	
Assistant Steward	14	0		
Steward	22	9 to 27		5
Leading Steward	33	10 to 36		2
Petty Officer Steward	45	6 to 51		4
Chief Petty Officer Steward	56	0 and		
						upwards.	

A clothing gratuity of £2 per annum is paid in certain ships and Naval Establishments where Officers' Stewards are employed as personal servants to Officers and as Mess Waiters.

II. NON-CONTINUOUS SERVICE

Men are entered for non-continuous service as Assistant Stewards between the ages of 18 and 30. Men over 30 years of age are permitted to enter in special cases with prior Admiralty sanction.

Candidates sign an engagement to serve for 5 years, provided their services are so long required. They are liable to discharge at any time for unsuitability, or on the paying off of their ships. Under certain conditions, however, men recommended on paying off, etc., who sign a new non-continuous service engagement and undertake to accept whatever Naval employment is found for them, may be borne on Depot books (with pay) for a limited period to await re-employment. They must accept no private shore engagement while so borne.

PROMOTION TO RANK OF OFFICER

Promotion to Warrant Rank and Above

Warrant Rank.—Promotion to Warrant rank is attainable in vacancies, according to the requirements of the Service, in all branches (except Blacksmiths, Joiners, Painters, Plumbers and Officers' Stewards).

Candidates for Warrant rank must pass an educational test, have a good record, be recommended by their Commanding Officers, and pass such professional examinations as may be required from time to time.

Commissioned Officers from Warrant Rank.—On reaching 10 years' seniority, as a general rule, Warrant Officers are promoted to Commissioned Officer from Warrant rank provided they have fulfilled certain specified conditions as regards service, etc.

Earlier promotion may be granted for war or other distinguished service.

Lieutenant.—A limited number of Officers of the rank of Lieutenant, or rank corresponding thereto, is allowed in each branch, and Commissioned Officers from Warrant rank are promoted as vacancies occur, if they are recommended and their records are satisfactory.

Lieutenant-Commander.—A Lieutenant or Officer of corresponding rank may, on attaining 8 years' seniority as such, be granted the rank of Lieutenant-Commander.

Sub-Lieutenant, Sub-Lieutenant (E) and above

I. SEAMAN, ETC., BRANCHES

In addition to the system of promotion to Warrant and higher ranks, the regulations provide for the promotion of specially selected ratings in the Seaman, Signal, and Wireless Telegraphy Branches to the rank of Sub-Lieutenant.

Candidates must have reached a suitable educational standard, pass an examination in Seamanship, and be recommended by their Commanding Officers and by a Selection Board as in all regards suitable, the final selection being made by the Admiralty. Substantial gratuities are granted towards the cost of uniform, etc. If selected, they reach the rank of Acting Sub-Lieutenant at the age of 21-24 and thereafter take their place on an equal footing with officers entered in other ways.

Lieutenant.—Sub-Lieutenants are promoted to the rank of Lieutenant after about $1\frac{1}{2}$ to $2\frac{1}{2}$ years, the period depending on the classes of certificates they obtain in the examinations they are required to pass for that rank.

Lieutenant-Commander.—On attaining 8 years' seniority as Lieutenant, an Officer is promoted to the rank of Lieutenant-Commander.

Commander and above.—Lieutenant-Commanders promoted as above are eligible for promotion to the rank of Commander and to higher ranks, by selection in competition with direct entry Officers.

II. ENGINE-ROOM BRANCHES

Ratings of the Engine-room branches (Engine-room Artificers and Mechanics) are similarly eligible for promotion by selection to the rank of Sub-Lieutenant (E).

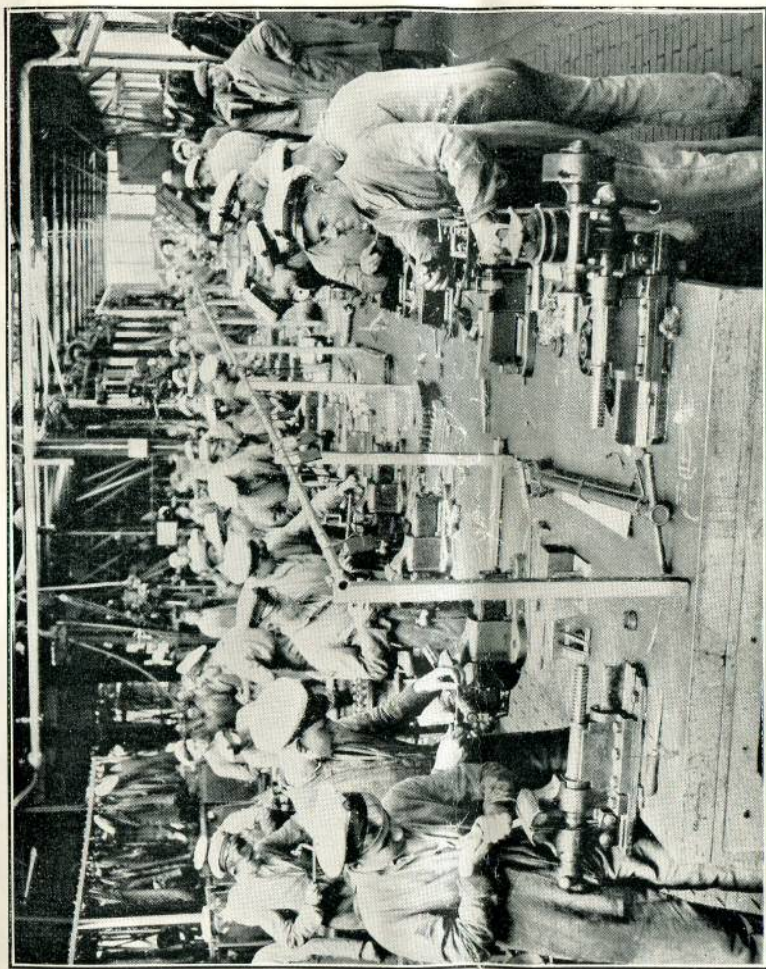
Candidates must have passed a professional examination and be

recommended. Gratuities towards the cost of uniform, etc., are granted as in the case of Sub-Lieutenants.

The further promotion of Sub-Lieutenants (E) is generally similar to that of Sub-Lieutenants as described above.

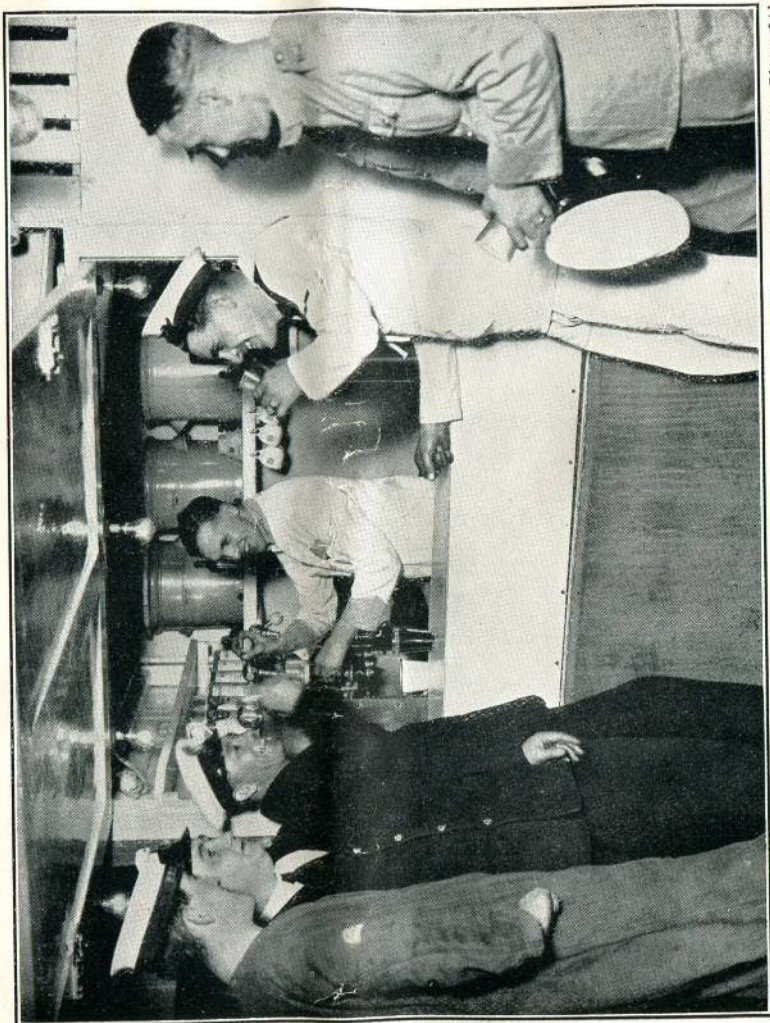
WIDOWS' PENSIONS

The widows of Officers are eligible, under certain specified conditions, for pensions of from £35 a year upwards, and their children for allowances of from £12 a year upwards according to circumstances. Higher rates are granted if the Officer's death is attributable to the Service.



[Photo by Central Press Photos, Ltd.]

MECHANICAL TRAINING ESTABLISHMENT. ARTIFICEE APPRENTICES IN THE WORKSHOPS IN THE DOCKYARD, CHATHAM



[Photo by London News Agency Photos, Ltd.]

THE SHIP'S CANTEEN

THE ROYAL MARINES

Colonel-in-Chief—THE KING

The Royal Marines

The Royal Marines form a portion of the Naval Forces of the country; their organisation is, therefore, distinct from that of the Army, although they are fully trained as soldiers, and their motto "Per mare, per terram" (by sea and land), aptly describes the nature of their duties. Service in this corps offers great attractions to lads having a liking for soldiering combined with service afloat. A proportion of these serve on board Men-of-War, the remainder in permanent barracks at the several Divisions named below.

The Corps includes a large proportion of Warrant and Non-Commissioned Officers; there are thus many opportunities of promotion for smart and intelligent men of good character and sufficient education.

Young men between the ages of 17 and 23 are eligible for the corps of Royal Marines, provided they can produce satisfactory records of character.

Candidates are required to produce their Birth Certificates, if possible. For candidates born in Ireland, a baptismal certificate showing the date of birth will be accepted.

Each Recruit is subjected to a medical examination; he must be strong, vigorous and healthy, free from bodily infirmity, be able to read and write fairly well, and have a fair knowledge of the first four rules of arithmetic.

All candidates must be willing to undergo vaccination, revaccination, and inoculation if required.

Terms of Enlistment (Long Service).—For 12 years from the age of 18 or date of entry if older, with the prospect of joining the Royal Fleet Reserve on discharge, under certain conditions.

On completion of 12 years' service, men of good character, if recommended, are permitted to re-engage for a further term of 9 years to complete 21 years in all for pension.

PHYSICAL STANDARD

Age.	Height.				Chest.
	ft.		in.		Inches.
17 to 18	5	6	$\frac{1}{2}$	33 $\frac{1}{2}$
18 to 19	5	7	34
19 and over	5	7	$\frac{1}{2}$	34 $\frac{1}{2}$

Eyesight.—6/6 each eye, tested separately. For R.M. Band 6/12 each eye, tested separately.

These standards vary from time to time, and the nearest Recruiting Staff Officer, Royal Navy and Royal Marines, should be communicated with before incurring travelling or other expenses. Any further information needed can be obtained from—

The Recruiting Staff Officers, see page 36 for addresses, or from the Brigade Major, R.M., Divisional Headquarters, Portsmouth, Plymouth and Chatham, or Depot, R.M., Deal.

WEEKLY RATES OF PAY

	s. d.	s. d.
Boy Bugler on enlistment	5	3
Boy Bugler on completing training or after 1 year	8	9
Boy Musician on enlistment	5	3
Boy Musician after 1 year	8	9
Bugler or Musician	14	0
Bugler or Musician after 1 year as such	21	0
Marine on enlistment	14	0
Marine on completion of Depot training or after 1 year's R.M. service	19	3
Marine on completing training ready for embarkation	21	0
Marine, Musician, or Bugler after 3 years' man's time	23	4
Marine, Musician, or Bugler after 6 years' man's time	25	8
Corporal	32	1 to 34 5
Sergeant	42	0 to 47 10
Colour-Sergeant	52	6 to 59 6
Quartermaster-Sergeant, etc.	63	0 upwards

Men of certain ranks specially qualified in Gunnery can obtain further pay up to 10s. 6d. per week while remaining efficient and available for Sea Service.

Extra Pay

There are many employments, especially for men who have some knowledge of a trade, whereby extra money may be earned both ashore and afloat.

Lodging Money.—Non-Commissioned Officers and Men, when serving on shore, and not provided with quarters, receive Lodging Money at Naval rates.

Free Rations

A liberal ration is issued free to all Royal Marines, whether serving ashore or afloat. If the ration is not issued in kind, an allowance is granted in lieu.

General Advantages

Free Kit.—A complete kit is issued free to all recruits, and renewed at regular intervals. Bedding is also issued free.

Purchase of Discharge before the expiration of engagement *cannot be claimed as a right*; but under normal conditions it may be granted, subject to the requirements of the Service at the time, and to evidence being produced that there are good reasons for the application.

Allotments.—Facilities are given for allotting and remitting money to families and friends, free of expense.

Good Conduct Pay to all Ranks below Warrant Officers.—1s. 9d. a week is given for each Good Conduct Badge earned up to a limit of three badges.

Pensions. I. Non-commissioned Officers and Men.—After 21 years' qualifying service, pensions are awarded for life. The amount varies according to conduct and the position filled.

Men disabled or invalided from the service are eligible for pensions or gratuities according to the circumstances of the case and the nature of the injury. Life Pensions may be granted, irrespective of length of service to men invalided for severe injury contracted on duty.

Age pensions of 2s. 11d. a week will be granted to Life Pensioners of good character, when they reach the age of 55.

Pensions at varying rates may also be granted from the funds of Greenwich Hospital at the discretion of the Admiralty to Non-Commissioned Officers and Men of the Royal Marines incapacitated by ill-health.

II. Warrant Officers and Commissioned Officers from Warrant Rank

Warrant Officers	From	£	109	to	£	163	per annum.
Commissioned Officers from Warrant Rank	181	to 226 ..

About two-thirds of the Corps are serving afloat. It will thus be seen that the life of a Royal Marine is very varied. A man is never long away from home, and after serving afloat he always returns to his own Divisional Headquarters, while opportunities occur of seeing many parts of the world.

Promotion.—There are many opportunities of promotion to Non-Commissioned Officer for intelligent men of good character, the average period of service before promotion being : Corporal, 7½ years ; Sergeant, 13 years ; Colour-Sergeant, 18 years.

There is besides a number of Warrant Officers in the Corps, to which position Senior Non-Commissioned Officers are appointed. An outfit gratuity is payable on promotion to Warrant rank.

To these Warrant Officers are open 17 commissions as quartermasters, etc. Combatant Commissions, up to one or two a year, may also be granted from the ranks.

Quartermasters, etc., so promoted receive a further gratuity towards outfit. Officers promoted to Combatant Commissions from the ranks receive gratuities for outfit.

Widows' Pensions, etc.—Widows of Quartermasters are eligible, under certain specified conditions, for pensions of from £50 to £100 a year, and their children for an allowance of £16 a year, with higher rates in cases in which the death of the Officer is attributable to the Service.

Marriage.—Men are permitted to marry, and are either provided with quarters or allowed to reside out of barracks whilst on shore.

Barracks, Amusements, etc.—The Barracks at the Divisions are most comfortable and well found in all respects, there being a library, theatre, recreation rooms, canteens, and cricket and football grounds.

Schools.—Any man wishing to improve his education can attend school in the Barracks free of cost.

Royal Marine Bands for Service Afloat and Ashore

Candidates may join the Royal Marines for service in the Fleet as Musicians. They must be found medically fit, and will also be required to pass an educational test consisting of dictation and arithmetic.

Age and Musical Knowledge on Enlistment.—Boys between 14 and 14½ years may be accepted with only a slight knowledge of music ; between 14½ and 18 years a more advanced knowledge commensurate with their age is necessary. Men between 18 and 23 years may be accepted if they are capable performers on either a String or Wind instrument.

Terms of Enlistment.—All recruits are enlisted for 12 years' service, commencing from the age of 18 years, or from the date of entry if above

18 years of age, with the prospect of re-engaging, if recommended, for a further period of 9 years to complete 21 years' man's service for pension.

Instruction.—On first entry all recruits join the Royal Naval School of Music at Deal, for a course of instruction. At the age of 18 (or earlier if promoted to Musician before that age) they become available for service afloat.

RATES OF PAY, ETC.

	<i>s.</i>	<i>d.</i>	<i>s.</i>	<i>d.</i>	
On entry as Band Boy	5	3			a week.
Band boy after 1 year's service	8	9			"
Musician	14	0			"
Musician after 1 year's service as such	21	0			"
Rising to	25	8			"
Band Corporal	32	1	to	34 5	"
Bandmaster, 2nd Class	42	0	to	47 10	"
Bandmaster, 1st Class	52	6	to	59 6	"

Band ranks enjoy the same advantages as regards free clothing, rations, medical attendance, pensions, allotment of money to relatives or friends, and amusements, as other members of the Corps of Royal Marines.

Any further information concerning Royal Marine Bands will be supplied on application to:—

The Superintendent,
Royal Naval School of Music,
Deal, Kent.

PART III—HOW TO JOIN THE ROYAL NAVY

If you are considering joining the Royal Navy, and think that you will be able to fulfil the requirements for one of the ratings in which new entries are made, FILL UP THE FORM at the end of this book, tear it out, and send it to the most convenient Recruiting Officer. You will find a list of these and their addresses on pages 36 and 37.

The Recruiting Officer will then tell you what to do next.

You are strongly advised to send the Form to a Recruiting Officer before incurring any expense in travelling, as there may not be immediate vacancies in the rating you select.

Read carefully the following special notes and conditions of entry before you send off your form:

SPECIAL NOTES

By joining the Royal Navy a boy or man obtains both that security of employment which, subject to good health and efficient performance of duties, is usually offered in the service of the State, and also security of the pay and pension rates to which he may be entitled by the King's Regulations, subject to the right of H.M. Government to alter the rates of pay and pensions during the period of service should it become necessary to do so at any time.

Alterations are liable to be made from time to time in standards of age, height, chest, and so on.

Recruiting Officers are in a position to give candidates information upon any changes in conditions that have taken place.

The official authority for the conditions under which boys and men accept service in the Royal Navy and Royal Marines is the King's Regulations and Admiralty Instructions and the amendments thereto published from time to time.

Conditions of Entry

Nationality.—Candidates must be of British nationality, and the sons of British-born subjects on both sides.

Age.—The age limits for entry vary, and will be found under each Branch. Candidates are required to produce their birth certificates, if possible. For candidates born in Ireland a baptismal certificate showing the date of birth will be accepted.

Character.—All recruits are required to be of very good character, and references for this will be required. Boys and men who have been in prison or reformatories are not accepted.

Medical Examination.—All candidates, before being accepted, are subjected to a strict medical and dental examination by a Naval Medical Officer to ascertain that they are free from any physical defect or disability. The Recruiting Officer arranges for a provisional examination when necessary, by a local Medical Practitioner at Government expense.

Height and chest measurements vary for different ratings. Height measurement is taken without shoes, chest measurement without clothes. The chest measurement is the mean between the maximum measurement with chest fully inflated and the minimum with chest deflated.

Full normal eyesight is usually required unless otherwise stated; and candidates for seaman and signal branches, and boys, must have normal colour vision. In most other ratings a slight degree of colour defectiveness does not disqualify. The wearing of glasses is not necessarily a bar to entry in most ratings.

The number of missing or defective teeth allowed is dependent upon the position of such defects and varies with the age of the candidate, but in every case the mouth and teeth must be in a good healthy and functional condition or capable of being rendered so by appropriate treatment.

Extensive dental disease or loss of many teeth may cause rejection, e.g. 5 teeth missing or beyond repair in candidates for entry as boy, or 10 teeth in the case of candidates for man's rating, but these numbers are intended as a general guide only and are not rigidly adhered to provided the candidate's remaining teeth are sound and afford an adequate masticating area. In certain branches the wearing of well-fitting artificial dentures is not a bar to acceptance.

Candidates who are in doubt as to their medical and dental fitness for entry are recommended to obtain full information regarding the standards applicable to their age and the branch which they desire to join.

Fuller information as to medical and dental standards can be obtained on application to any Recruiting Office or Naval Depot. Candidates should, as a rule, apply by letter, or on the form at the end of this pamphlet, before incurring travelling expenses in proceeding to a Recruiting Office.

Candidates who are accepted by Recruiting Officers are sent, free of cost, to a Royal Naval Depot or Training Ship.

All candidates must be willing to undergo vaccination, re-vaccination, and inoculation if required.

Candidates rejected at the final examination at a Naval Depot (excepting any who have declined to serve) are granted a free pass to their homes.

Educational Test.—Candidates are normally subjected to an educational test, the nature of which will depend upon the rating for which they enter. The professional test for special ratings is shown against each Branch in Part II of this book.

Discharge before Completion of Engagement

Men are bound to complete the full term of their engagement, and cannot claim their discharge as a right before it is completed. In exceptional circumstances, however, provided they can be spared and have urgent reasons for wanting to leave, they may be allowed to purchase their discharge for an amount which varies with their rating and length of service. In some cases, free discharge may be granted on compassionate grounds if a man's family circumstances make it impossible to produce the amount required.

The Admiralty has the right to discharge a man at any time ; but in practice men are not discharged before the completion of their engagements unless they fall below the physical standards required, or misconduct themselves seriously, or show so poor a standard of ability that they are unsuitable for retention.

H.M.S. *Nelson*.

GENERAL MESS MENU

4th April, 1936

Day	Breakfast	Dinner	Tea	Supper
Sunday	Bacon and Egg	Tomato Soup Roast Pork Potatoes Cabbage Fruit and Custard	Butter Cake	Coffee, Cold Roast Beef and Tomatoes
Monday	Fried Fish	Kidney Soup Steak and Kidney Pie Potatoes Marrowfat Peas Rice Pudding	Butter	Haricot Mutton, Potatoes
Tuesday	Eggs, Boiled and Fried	Pea Soup Boiled Beef Potatoes Carrots Jam Tart	Butter	Cottage Pie
Wednesday	Bacon and Tomatoes	Ox Tail Soup Roast Beef Potatoes Cabbage Suet Pudding and Syrup	Butter	Soup, Cheese and Tomatoes
Thursday	Sausage and Egg	Pea Soup Season Pudding Potatoes Haricot Beans Fruit Salad and Custard	Butter	Steak, Onions and Mash
Friday	Porridge Kippers	Kidney Soup Preserved Meat Beetroot Potatoes Butter Beans Date Pudding	Butter	Durham Cut- lets, Mashed Potatoes
Saturday	Liver and Bacon	Pea Soup Brown Stew Potatoes Marrowfat Peas Bananas	Butter	Soup, Salmon and Tomatoes

(Tea, bread, and the usual condiments are supplied in addition.)

LIST OF ROYAL NAVAL AND ROYAL MARINE RECRUITING OFFICERS AUTHORISED TO RAISE MEN AND BOYS

FOR ALL RATINGS

The Commodores, Royal Naval Barracks, Portsmouth, Devonport, and Chatham.

RECRUITING HEADQUARTER STATIONS

The Recruiting Staff Officer, R.N. and R.M., at :—

- Birmingham**, 5—5/6, Edgbaston Street.
- Bristol**, 1—121, Victoria Street.
- Derby**—96, Green Lane.
- Glasgow**—300, Bath Street.
- Liverpool**, 1—30a, Canning Place.
- London**, S.W.1—85, Whitehall.
- Manchester**, 3—289, Deansgate.
- Newcastle-on-Tyne**, 4—116, Rye Hill.
- Southampton**—6, Orchard Place, Queen's Park.

OUTSTATIONS

The R.N. and R.M. Recruiter at :—

- Aberdeen**—52, Market Street.
- Belfast**—131a, Donegall Street.
- Blackburn**—47, Eanam.
- Brighton**, 1—161, King's Road Arches.
- Cambridge**—Llandaff Chambers, Regent Street.
- Cardiff**—53, Charles Street.
- Carlisle**—15a, Lonsdale Street.
- Chatham**—Opposite Town Hall.
- Coventry**—The Hutments, Rear of 6 and 7, Queen's Road.
- Devonport**—New Passage Hill.
- Dorchester**—Top o' Town House.
- Dundee**—20, Barrack Street.
- Edinburgh**—22, Haddington Place, Leith Street.
- Enniskillen**—
- Exeter**—31, Queen Street.
- Hull**—Government Buildings, Springbank.
- Inverness**—
- Ipswich**—16, Crown Street.
- Kingston-on-Thames**—23, Eden Street.
- Lancaster**—12, The Arcade.
- Leeds**—28, Great Wilson Street.
- Leicester**—97, London Road.
- Lincoln**—7, Lindum Terrace.
- Newport, Mon.**—21, Cambrian Buildings, Cambrian Road.
- Northampton**—32b, Bridge Street.
- Norwich**—9, Princes Street.
- Nottingham**—18, Trinity Walk.
- Portsmouth**—13, Edinburgh Road.
- Reading**—18, Oxford Street Chambers.
- Salisbury**—21, High Street.
- Sheffield**, 1—33, York Street, East Parade.

THE ROYAL NAVY AS A CAREER

The following amendments should be made in the list of addresses of Recruiting Offices, page 36 :—

RECRUITING HEADQUARTERS STATIONS

Against " **Newcastle-on-Tyne, 4** "

Delete " 116, Rye Hill "

Substitute " 184, Westmorland Road "

OUTSTATIONS

Against " **Enniskillen** "

Insert " 1, Belmore Street "

Against " **Inverness** "

Insert " 3, Union Street "

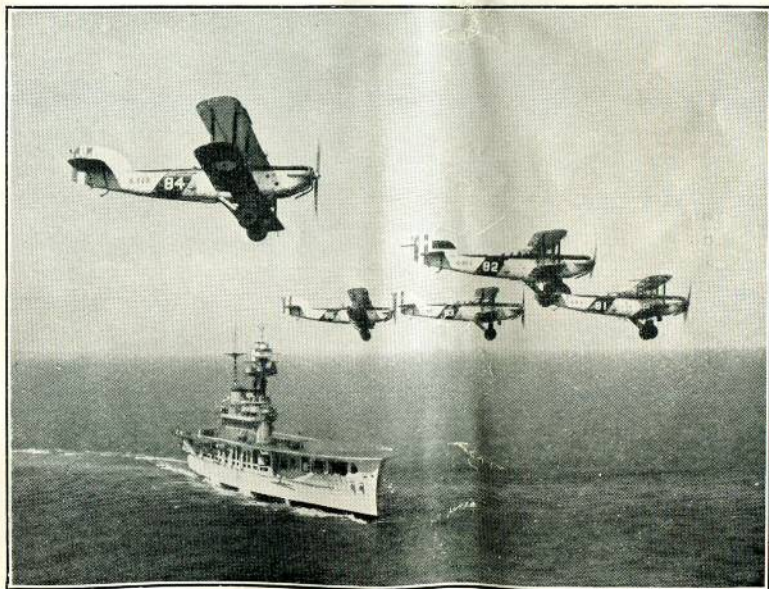
(399/378) Wt. 31293—7338 800M 1/37 H & S Ltd. Gp. 399

Devonport—New Passage Hill.
 Dorchester—Top o' Town House.
 Dundee—20, Barrack Street.
 Edinburgh—22, Haddington Place, Leith Street.
 Enniskillen—
 Exeter—31, Queen Street.
 Hull—Government Buildings, Springbank.
 Inverness—
 Ipswich—16, Crown Street.
 Kingston-on-Thames—23, Eden Street.
 Lancaster—12, The Arcade.
 Leeds—28, Great Wilson Street.
 Leicester—97, London Road.
 Lincoln—7, Lindum Terrace.
 Newport, Mon.—21, Cambrian Buildings, Cambrian Road.
 Northampton—32b, Bridge Street.
 Norwich—9, Princes Street.
 Nottingham—18, Trinity Walk.
 Portsmouth—13, Edinburgh Road.
 Reading—18, Oxford Street Chambers.
 Salisbury—21, High Street.
 Sheffield, 1—33, York Street, East Parade.



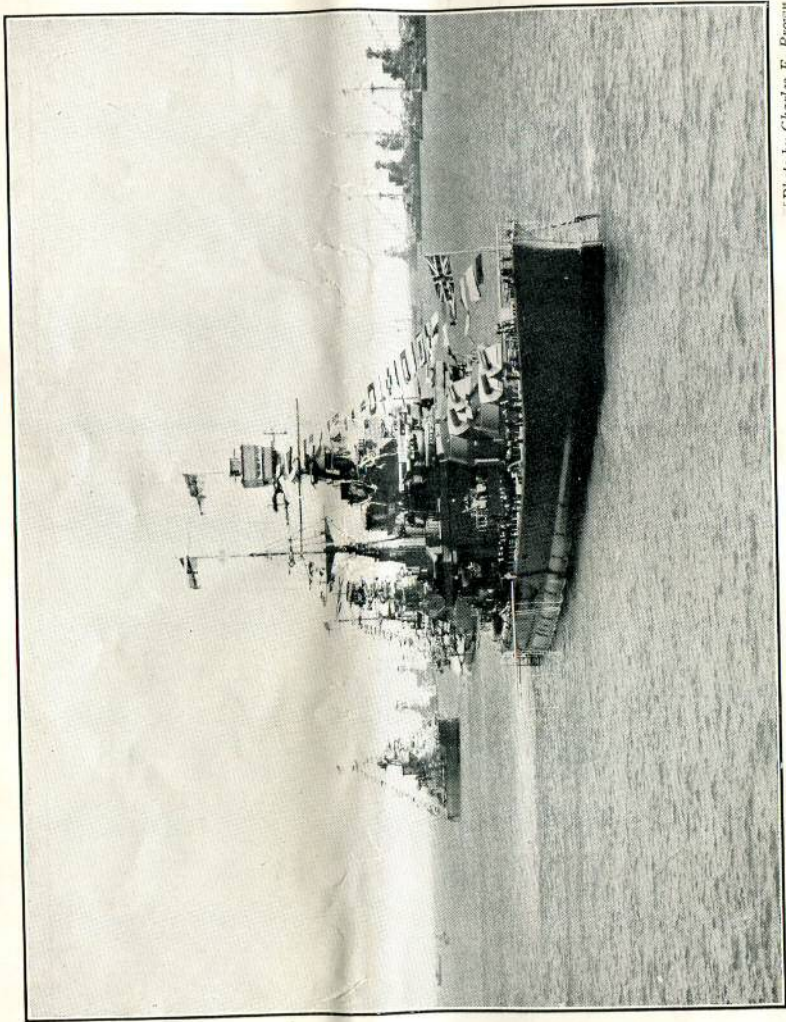
[Photo by Lieut. C. D. H. Briggs

KEEPING FIT ON FOREIGN SERVICE. A NAVAL TEST MATCH: PORT
WATCH V. STARBOARD WATCH



[Photo by Charles E. Brown

AIRCRAFT OF THE FLEET AIR ARM FLYING OVER
THEIR PARENT SHIP, H.M.S. "EAGLE"



[Photo by Charles E. Brown

THE FLEET AT THE JUBILEE REVIEW
H.M.S. "RENOWN" IN THE FOREGROUND

Stoke-on-Trent—4, Copeland Street.
Stratford, E.15—77, The Grove.
West Hartlepool—15, Church Street.
Winchester—1a, Southgate Street.
Worcester—3, Sansome Place.
Wrexham—20/22, Regent Street.

FOR CERTAIN RATINGS ONLY

Electrical Artificers :—

Commanding Officers, Royal Naval Torpedo Schools, Portsmouth and Devonport.

Boys (Seaman Class) :—

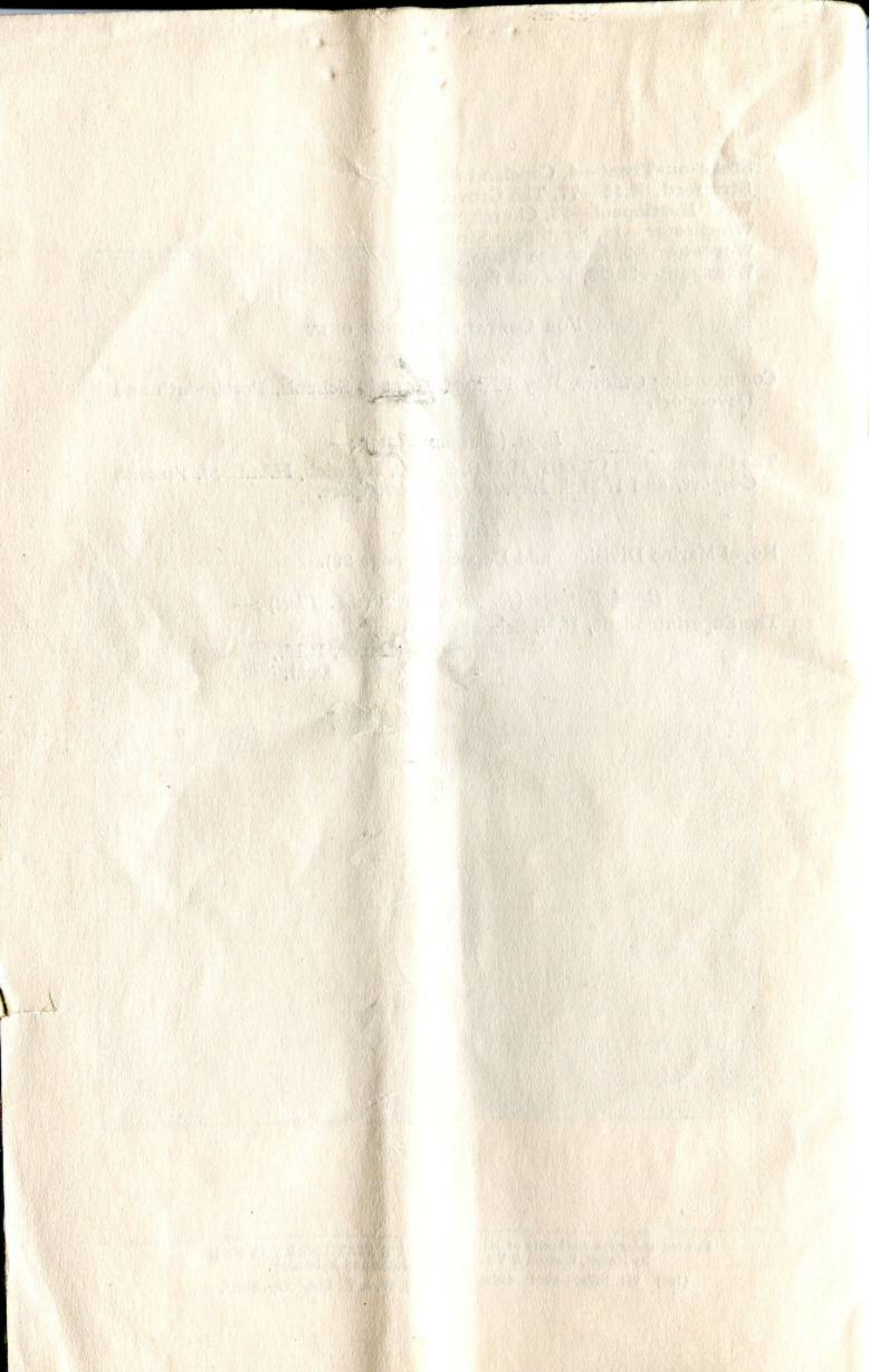
The Commanding Officers, H.M.S. *Ganges*, Harwich, H.M.S. *St. Vincent*, Gosport, and H.M.S. *Impregnable*, Devonport.

Marines :—

Royal Marine Divisions and Depot (see page 29).

Band Ratings (for service in H.M. Fleet) :—

The Superintendent, R.N. School of Music,
 Depot, R.M.,
 Deal.



FORM OF APPLICATION TO JOIN THE ROYAL
NAVY OR ROYAL MARINES

Sidney G. Spencer
Wetaskiwin Alberta Can } (Full Address
of Applicant.)
..... *October 26 1937* (Date.)

I am desirous of being considered as a Candidate for entry in
{ the Royal Navy
or Royal Marines.

I wish to enter as... *Boy Seaman*
(state rating)

My age is... *15* years... *2* months, and

my height without boots is about... *5* ft... *8 1/2* in.,

and my maximum chest measurement... *41 1/2* in.

I can give satisfactory references as to my character.
Please send me directions how to proceed.

Sid Spencer (Signature.)
To—The Recruiting Staff Officer, Royal Navy and Royal Marines.

.....
For addresses of Recruiters, see page 36.

