

For Posterity's Sake

A Royal Canadian Navy Historical Project

HMCS STADACONA

Engineer Division

Information Brochure

1962

Courtesy of Arthur Horn , PO2 Mar Eng T 311

H.M.C.S. STADACONA



**ENGINEERING DIVISION
INFORMATION BROCHURE**

1962

THE ENGINEERING DIVISION

The AIM of the Engineering Division is to train officers and men to fulfill competently their function in the Fleet.

HISTORY

The School was originally formed in 1939 as the Stokers Training Establishment and was located in the Dockyard. Prior to this there had been no formal shore training for the Stoker Branch on the East Coast. Artificers only received formal training ashore and this was given on the West Coast.

In 1942 the school was moved into "Stadacona" and became known as the Mechanical Training Establishment and was for the formal training of the Stoker and Shipwright Branches on the East Coast.

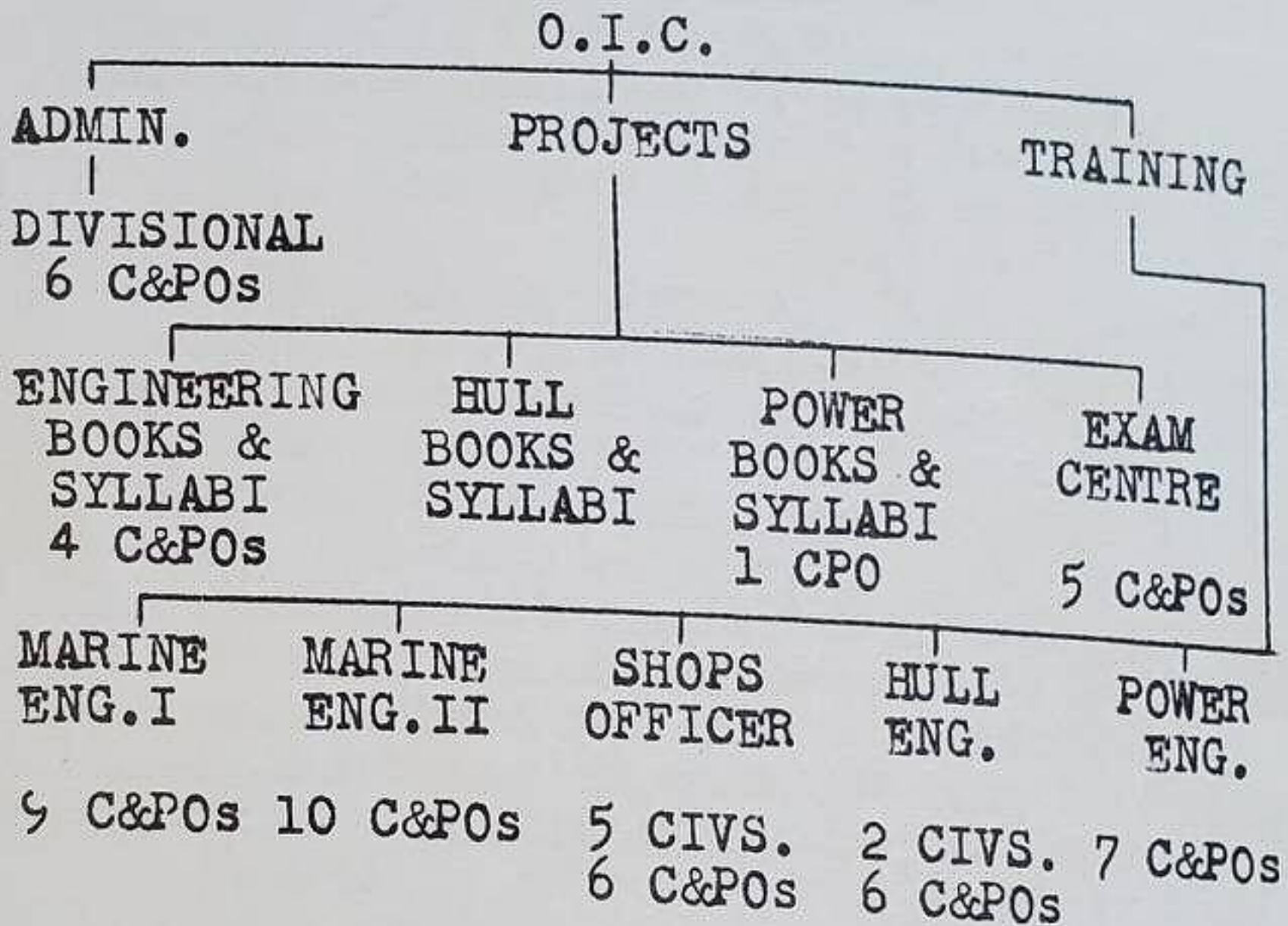
Until 1960 the school was directly responsible for Stoker and Shipwright training but has, since the amalgamation of the Stoker, Shipwright and Electrical Power branches into the one Engineering Department, become an integral part of the Fleet School in "Stadacona" which directs the training of personnel of all branches. This has enabled the training and advancement of personnel of all branches to be standardized, that all may have equal opportunities for getting ahead irrespective of trade.

FACTS AND FIGURES

At the time of writing, (Feb. 1962), approximately 350-400 men are under training at any one time in the Engineering Division of the Fleet School, comprising 20-25 classes of varying ranks.

To complete the training of all personnel passing through the Division the Officer-in-Charge has a staff of twelve Officers and fifty-six Chief and Petty Officers, plus seven permanent Civilian Instructors.

THE ORGANIZATION



Mar. 62.

DAILY ROUTINE

FORENOON

-0755	Out Pipes
0805-0855	Instruction
0905-0955	Instruction
0955-1010	Stand Easy
1010-1100	Instruction
1110-1200	Instruction

AFTERNOON

1310-
1315-1405
1415-1505

1515-1605
1615-1645

Exceptions to this routine:-

0800 & 1100	Mondays	Padre's Hour as piped.
0755-0845	Fridays	Divisions - No.1 suits
1615-1645	Monday	Clean ship routine
1616-1645	Friday	
1615-1645	Tuesday	Evening Quarters, unless cancelled by pipe.
1615-1645	Thursday	
0955-1200	Wednesday	Sports as detailed
1505-1700	Wednesday	

SPORTS

Classes participate on Wednesday forenoon or afternoon as detailed. All personnel first muster in P.T. rig in the gymnasium for 15 minutes exercises before proceeding to bowling, swimming, etc.

Major sports are run mainly on an individual basis with training periods and matches taking place during the evenings and at weekends.

LEAVE

Long leave may be taken only when instruction ceases in the School, which is at Christmas only. All Public Holidays are recognized when long weekends may be taken, dependent upon duties. No other leave will be granted unless it is of a compassionate nature.

REQUESTMEN AND DEFAULTERS

Requests are to be handed in by 0800 daily. Requestmen and Defaulters will muster outside the Regulating Office at 0955.

Personnel failing any part of their course will normally be seen by the Officer-in-Charge at this time.

SMOKING

Smoking is permitted in classrooms at the discretion of the instructor and in the Workshops. It is otherwise permitted only in designated areas.

CLEANLINESS

Classrooms and other Instructional areas are to be left in a respectable state or the class responsible for the mess will be required to clean it up in their own time. This also applies to lounge areas set aside for trainees benefit.

COURSES

The majority of personnel passing through the Engineering Division are on course for Trade Group 2,3 or 4. Other courses of various lengths are also arranged for General List and Branch Officers, Wrens, Writers, R.C.N.R. personnel, Weapons personnel, etc. Short courses are also available to men in the Fleet on Refrigeration, Bailey Meter Control, Painting, Corrosion, etc.

ROOM NUMBERING

All room numbers indicate the building in which the room is situated, and on which floor:

e.g.: 8 or 9 at beginning is for building 8 or 9.

B,G,U,P is for basement, ground, upper or penthouse floor.

1-20 is room number on that floor.

COURSE AIMS

Engineering

- T.G.2 - To acquaint men with the auxiliary machinery in the Fleet and sufficient knowledge to do simple maintenance. Fitting Shop practice is given.
- T.G.3 - Detailed explanation of machinery except main propulsion machinery, to enable detailed maintenance to be done. A basic knowledge of main propulsion machinery is given, and diesel operating experience.

T.G.4 - Advanced knowledge of ships machinery to enable men to competently supervise maintenance and to discharge overseeing duties.

Hull Engineering

T.G.2 - To teach a skill of hand in ships carpentry, acetylene welding, sheet metal work, plumbing, painting and ships husbandry and to introduce the man to the elements of ships construction.

T.G.3 - To further develop the skills of the man in specialized projects and to introduce him to ships drafting, stability and other theory connected with his trade.

T.G.4 - To complete the skill of hand training and give further theoretical instructional so that he may be competent to perform overseeing and supervisory duties.

Power Engineering

T.G.2 - To give men a sufficient knowledge of the theory and operation of Electrical equipment and sufficient skill of hand training to do simple maintenance of this equipment.

T.G.3 - To give men a comprehensive knowledge of the theory and operation of electrical equipment to do detailed maintenance and sufficient knowledge of circuitry to competently analyze circuit faults, plus a knowledge of the planned maintenance system in use.

T.G.4 - To complete the knowledge of theory and operation of equipment, circuitry and specifications in order to competently perform supervisory and overseeing duties.

COURSE PASSING STANDARDS

All courses are divided into a number of Phases, for each of which there is an examination. Twenty marks are allocated to the examination for each day of instruction in that particular Phase.

Candidates must obtain 50% in each Phase examination to pass, and an overall aggregate for the whole course of 60% to qualify.

Anyone failing an examination will be considered for removal from the course, and will be seen by the O.I.C. Candidates may be allowed to write a supplementary exam, or be placed on probation for a period, but failure to improve will normally result in removal from course. Under certain circumstances a man may be back-classed for the whole, or part, of a course.

During practical phases certain projects and trade tests have to be completed. The former are allowed unlimited time and may be worked on in the Dog Watches when the Shops are kept open for this purpose. Marks are allocated to this Phase as above, with passing standard of 50%.

ADVANCEMENT

The speed of advancement of an individual will depend on his ability and work during the Trade Group Courses and for the Engineering personnel on their ability to apply their knowledge when at sea for granting of various watchkeeping certificates

TIME IN RATE	FOR RATE OF	TRADE QUALIFICATION AND CERTIFICATE RE- QUIRED BY ENGINEER- ING PERSONNEL
New Entry	OS	S
18 months (6 months)	OS	1
	AB	1
21 months (12 months)	AB	2
	LS	2
30 months (12 months)	LS	3
	P2	3
30 months (12 months) 3 years	P2	4
	P1	4
	C2	4
(1 year)	C2	4
3 years		
(1 year)	C1	4

TG1 granted by Ship E.O.

Cert.1 granted by ship's E.O.
TG2 at Eng.Div.

TG3 at Eng.Div.
Cert.2.granted by ships E.O.
TG4 at Eng.Div.

Cert.3 granted by ships E.O.

Cert.4 granted by Eng.
Division on results of individual examination

Clothing Lockers:

1. Men in workshops will be allocated a clothing locker on application to the Bosun P.O.
2. Men on S.A. may be allocated a locker if available.
3. Men in "A" Block will change in the Division.

Lounges and S.A. Men:

P2 Lounge-Classroom 8U17
LS Lounge-Room 8B4
AB Lounge-Classroom 8U14

These rooms are to be kept tidy by personnel using them.

July 1962