

4/
Dundas

~~April~~ 2-4-42
28-6-42

Dundas

S. 322 (Revised—October, 1935)
3M Bks.—11-40 (7955)
N.S. 815-9-322

DECK LOG BOOK

2nd April to 25 June 1942

For use at Sea and in Harbour



EXTRACTS FROM ARTICLES 863, 1167 AND 1208 KING'S REGULATIONS AND ADMIRALTY INSTRUCTIONS, 1926.

* * * * *
863(2). The deck logs (S.322) are to be retained in the ship or on deposit for four years and are to be available for forwarding if required. After this period they may be destroyed.

* * * * *
1167(3). Whenever a collision, or narrow escape from a collision, occurs, care should be taken to preserve * * * the deck log * * *. Entries are not to be erased, but, if correction is found to be necessary, the entry should be crossed through so that the correction may be shown, and the alteration initialled.

* * * * *
1208(3). ENTRIES.—He will be particular that all the particulars required by the established form of log are correctly entered in the log book, in addition to the following circumstances and all other occurrences of moment:—

(a) Notice of Main Engines for steam to be entered daily at noon and of any alteration. Times of weighing and proceeding.

(b) STRANGE SHIPS OBSERVED.—The arrivals, departures, the meeting at sea or finding at anchor of H.M. Ships and ships of war of all nations, transports and fleet auxiliaries. Salutes and ceremonies. Halfmasting and rehoisting colours; dressing ship, the occasion being stated.

(c) Every occurrence connected with the navigation of the ship and with discovered dangers; the set and velocity of the currents or tides; the result of all observations made, and angles or bearings taken to ascertain the ship's position; besides the currents between noon and noon when at sea, those experienced on leaving and making the land, or when running along the land are to be recorded, the number of hours between the observations being given.

(d) Peculiarities of the weather, sea and other atmospheric and natural phenomena, and other circumstances worthy of note. The height of the barometer and thermometer at 0000, 0400, 0800, 1200, 1600, 1800, 2000. In stormy weather the barometer should be noted every hour. Occasional notation of roll. Whenever the clocks are altered, the fact is to be noted in the remarks column, and a notation of the zone time being kept is to be made daily at noon.

(e) When in company the position of the leading ships is to be recorded, and the necessary particulars as to the ship herself and the other ships if out of station, especially at night.

(f) The anchoring or mooring the ship, giving depth of water, amount of cable, and position by bearings or the securing the ship to a wharf or buoy. The draught of water, fore and aft, before sailing and on arrival in harbour.

(g) Evolutions, exercises and landing on service or for drill; the closing of watertight doors.

(h) The employment of the ship's company. The daily inspection of the ship's company at divisions, evening quarters; holding Divine Service and reading of Prayers. The leave given, stating to which watch or part of the watch.

(i) The embarkation and disembarkation of all passengers.

(j) The entry and discharge of officers, and ratings, the number only of the latter to be given.

(k) Details and times of any accidents occurring on board or injury to important store articles or fittings; any damage caused by or to vessels berthing alongside. The circumstances of the loss of all important stores. It will be sufficient to specify in the log only the description of the important articles, making reference to the complete list kept with the store accounts where alone the details need be shown.

(l) The names of colliers, oilers and fleet auxiliaries and also the names or descriptions of lighters, etc., berthing alongside, with the times of arrival and departure, and the purpose for which brought alongside.

(m) Details of aircraft sighted in flight at sea, together with the time of the observation and, if possible, the marks of identification of the machine. Movements of fleet aircraft working with the Fleet need not be entered.

(n) The particulars of the hire of any vessel, boat, wharf or building for the service of the ship.

(o) All general payments.

(p) All punishments requiring warrants, the serial numbers being noted.

(q) Births and deaths on board. See 869 (*Births and Deaths to be reported to Registrar-General of Births, Deaths and Marriages*).

DECK LOG BOOK

For use at Sea and in Harbour

1. This Deck Log Book is to be carefully preserved. When not in use, it is to be kept in a painted canvas cover, or in a watertight box. When filled, it is to be taken charge of by the Captain, and kept on board for reference, if required.
2. The Officer of the Watch is responsible for the Deck Log, and for the due observance of the regulations respecting it; and he is to see that it is properly written up, in pencil, and he will sign it with the initials of his name before he leaves the Deck.
3. The readings of the Patent Log or Logs to be entered hourly in the column provided for the purpose. In the column marked "Distance Run," the distance through the water for each hour is to be registered according to the judgment of the Officer of the Watch, using the Log readings, their errors if known and the Revolutions as a guide, with allowances for the Wind and Sea. When the Ship has steered on more than one course during the hour, the distance run on each course must be entered.
4. The Standard or Gyro Compass Course, the Direction and Force of the Wind, and the State of the Weather, Sea and Swell, are to be registered at the end of each Watch, and when any change may occur in the same.
5. The corrected Barometric Pressure in millibars and the Temperature of the Air and Sea are to be registered at 0400, 0800, 1200, 1600, 1800, 2000 and 2400; but in Stormy Weather, the corrected Barometric Pressure in millibars is to be registered every hour. In the case of mercurial barometers, the correction to be applied to the reading of the instrument can be obtained by means of the "Gold slide." In the case of aneroid barometers, the only correction which need be applied is that for height, which can be obtained from the table on the opposite page.
6. In recording the Force of the Wind and State of the Weather, Sea and Swell, the following scheme is to be adopted:—

THE BEAUFORT WIND SCALE

Beaufort Number. International	Meteorological Wind Scale		The Seaman's Wind Scale	
	Limits of Velocities		Beaufort's description of Wind. International	Coastal Criterion
	Nautical miles per hour 2	Feet per second 3		
1	4	5	4	5
0	Less than 1	Less than 2	Calm	—
1	1—3	2—5	Light air	Sufficient to give good steerage way to fishing smacks with the "wind free."†
2	4—6	6—11	Light breeze	Fishing smacks with topsails and light canvas "full and by" make up to 2 knots.
3	7—10	12—18	Gentle breeze	Smacks begin to heel over slightly under topsails and light canvas make up to 3 knots "full and by."
4	11—16	19—27	Moderate breeze	Good working breeze. Smacks heel over considerably on a wind under all sail.
5	17—21	28—36	Fresh breeze	Smacks shorten sail.
6	22—27	37—46	Strong breeze	Smacks double-reef gaff mainsails.
7	28—33	47—56	Moderate gale	Smacks remain in harbour and those at sea lie to.
8	34—40	57—68	Fresh gale	Smacks take shelter if possible.
9	41—47	69—80	Strong gale	—
10	48—55	81—93	Whole gale	—
11	56—65	94—110	Storm	—
12	Above 65	Above 110	Hurricane	—

For the purpose of showing the forces of winds by wind roses on Meteorological Charts, winds are grouped as follows:—

Scale Numbers

0	Calm
1 to 3	Light winds
4 to 7	Moderate winds
8 and above	Gales

The scale numbers are attributed to the wind force at the time of observation by judgment of the observer. For the purposes of the Meteorologist, forces of 8 to 10 only are gales.

The Gale Warning Signal in the British Isles is hoisted for winds which may reach force 8 or above. For this purpose force 7 is not considered a gale.

In a steamer the force of the wind may be judged by an experienced observer by the appearance of the sea, remembering that rain has a smoothing effect, and tides or currents influence the sea surface differently when there is a weather or lee tide or current.

† Cutter or Yawl rigged average sized sailing trawler, loaded, with clean bottom.

LETTERS TO INDICATE THE STATE OF THE WEATHER

- | | |
|---|--|
| <ul style="list-style-type: none"> b Blue sky (less than 1/8ths covered). bc Sky partly cloudy (1/8ths to 1/4ths covered). c Generally cloudy (more than 1/4ths covered). d Drizzle, or fine rain. e Wet air without rain falling. f Fog. fe Wet fog. g Gloomy. h Hail. i Intermittent. KQ Line Squall l Lightning. | <ul style="list-style-type: none"> m Mist. o Overcast sky (1/2ths covered nimbus or stratus only). p Passing showers. q Squalls. r Rain. rs Sleet, i.e., rain and snow together. s Snow. t Thunder. u Ugly, threatening sky. v Exceptional visibility (abnormal clearness of the atmosphere). w Dew. x Hoar frost. y Dry air. z Dust haze. |
|---|--|

A capital letter denotes "intense" or "heavy"; e.g., R = heavy rain. Repetition of a letter denotes "continuous," e.g., RR = continuous heavy rain. Addition of suffix O to a letter denotes "slight," e.g., r_o = continuous slight rain.

DOUGLAS SEA AND SWELL SCALE

SEA	SWELL										
	No Swell	LOW			MODERATE			HEAVY			Confused
		Short or Average	Long	Short	Average	Long	Short	Average	Long		
0	1	2	3	4	5	6	7	8	9		
0 Calm	00	01	02	03	04	05	06	07	08	09	
1 Smooth	10	11	12	13	14	15	16	17	18	19	
2 Slight	20	21	22	23	24	25	26	27	28	29	
3 Moderate	30	31	32	33	34	35	36	37	38	39	
4 Rough	40	41	42	43	44	45	46	47	48	49	
5 Very Rough	50	51	52	53	54	55	56	57	58	59	
*6 High	60	61	62	63	64	65	66	67	68	69	
*7 Very High	70	71	72	73	74	75	76	77	78	79	
*8 Precipitous	80	81	82	83	84	85	86	87	88	89	
*9 Confused	90	91	92	93	94	95	96	97	98	99	

THE FOLLOWING WAVE HEIGHTS IN FEET CORRESPOND TO THE DOUGLAS SEA SCALE

0 Calm	0 feet	4 Rough	5—9 feet
1 Smooth	0—1/2 "	5 Very Rough	9—15 "
2 Slight	1/2—2 "	6 High	15—24 "
3 Moderate	2—5 "	7 Very High	24—36 "
		8 Precipitous	over 36 feet

NOTE.—In this scale a new departure has been introduced in that length of swell and height of swell are, from the point of view of observations, considered separately and then combined together for coding.

A *Short Swell* means a Swell where the length or distance between each successive top of swell is small.

A *Long Swell* means a Swell where the length or distance is large.

A *Low Swell* means a Swell where the height between the lowest and highest part of the swell is small.

A *Heavy Swell* means a Swell where the height is great.

* These are considered to represent seas which occur with a swell or in the open ocean, for instance, the highest sea recorded in sheltered waters would be 5, or under exceptional circumstances (e.g., a hurricane) 6 or 7 might be used. The idea of the roughness would be conveyed by the force of the wind.

† Occasioned by current, tide, sudden shift of wind, and not necessarily strong wind.

The above scales for sea and swell have been adopted separately for international use in weather reports.

7. The mean number of revolutions of the Engines per minute is to be registered every hour in the column appropriated for that purpose.

8. When in sight of Land, or of any known danger, cross bearings of, or angles between, well-defined objects, should be recorded at frequent intervals, and entered in the Log at least once in each Watch, for the information of the relieving Officers. The time of first sighting, and the bearing of, land or any marks, and of first obtaining soundings, with the results, are to be recorded.

9. In the space left for *Remarks*, must be recorded full information on all matters of importance or interest; as detailed in clause 3 of Article 1208 of the King's Regulations of which a copy is printed in the cover of this book.

At Sea, the *Remarks* column should contain all relevant information for working up the position of the ship at any moment, taking into consideration all the data logged on the left-hand page of each day.

L. 3380/92.

Sta. 96/32.

FOG AND VISIBILITY SCALE (SPECIFICATION FOR USE AT SEA)

0 Dense fog	Objects not visible at 50 yards.
1 Thick fog	" " 1 cable.
2 Fog	" " 2 cables.
3 Moderate fog	" " 1/2 mile.
4 Mist or haze, or very poor visibility	" " 1 mile.
5 Poor visibility	" " 2 miles.
6 Moderate visibility	" " 5 miles.
7 Good visibility	" " 10 miles.
8 Very good visibility	" " 30 miles.
9 Excellent visibility	Objects visible more than 30 miles.

To be inserted in "Weather and Visibility" column.

Reduction of Barometric Pressure in Millibars of Aneroid Barometers to Mean Sea Level

Pressure at Station level 1000 millibars

Height in feet above sea level	Air temperature (° F.) (Dry bulb in Screen)				
	0° F.	20° F.	40° F.	60° F.	80° F.
	mb.	mb.	mb.	mb.	mb.
10	0.4	0.4	0.4	0.4	0.3
20	0.8	0.8	0.8	0.7	0.7
30	1.2	1.2	1.1	1.1	1.0
40	1.6	1.6	1.5	1.4	1.4
50	2.0	2.0	1.9	1.8	1.7
60	2.4	2.4	2.3	2.2	2.1
70	2.8	2.8	2.7	2.5	2.4
80	3.3	3.1	3.0	2.9	2.8
90	3.7	3.5	3.4	3.2	3.1

This correction is always +.

Time	Log (stating type)	Distance Run		Mean Revs. per Minute	True Course	Gyro Compass Course	Standard Compass Course	Deviation	Variation	Wind		Weather and Visibility	Sea and Swell	Corrected Barometric Pressure in Millibars	Temperature °F			
		Miles	Tenths							Direction (true)	Force (0-12)				Dry Bulb	Wet Bulb	Sea	
0100																		
0200																		
0300																		
0400										N.W.	2	C 6	00					
0500																		
0600																		
0700																		
0800										W	1	B 6	00					
0900																		
1000																		
1100																		
1200										S.W.	1	B 6	00					

Number on Sick List	Distance run through the Water	Zone Time kept at noon	Leave Granted to Ship's Company	Anchor Bearings
			Watchkeeper leave 15.30 to 09.30 Cheifs + P.O. leave 16.30 to 08.00 Regular leave 16.30 to 07.30	

1300																		
1400																		
1500																		
1600										S.E.	1	B-6	00					
1700																		
1800																		
1900																		
2000										S.E.	1	B-6	00					
2100																		
2200																		
2300																		
2400										S.E.	1	B-6	00					

REMARKS					Initials of the Officer of the Watch
challenged harbour patrol 00.30 Barge secured alongside at 02.00					
Challenged harbour patrol collect barge 06.30 hands to stations for leaving harbour 07.20 07.55 tied up to Magazine jetty 08.05 oiling ship; 08.15 Hands to clean ship; 08.50 ammunition on dock ready for loading; 09.00 Divisions; 10.30 Stand Easy 10.15 finished oiling ship; 10.20 ammunition taken to magazine; 10.25 out pipes 11.35 finished ammunition ship; Hands to station for cleaning 11.30 afternoons watchmen to dinner & up spirits; 11.30 ammunition depot. 11.43 proceeded from ammunition depot to Ordnance Jetty 12.10 secured to Ordnance Jetty					

Position	Latitude	Longitude	Depending on	Currents experienced
0800				
1200				
2000				

12.15 Hands to dinner 12.25 Stand by ship no leave.	
13.45 Hands fall in	
14.20 Stand easy. 14.30 out pipes 14.50 left Ordnance Jetty.	
15.10 Tied up No 5 Jetty	
Leave Watchkeeper 15.30. Secure hands to tea 16.00.	
16.30 Liberty men fall in.	
17.30 Liberty men 18.30 Liberty men 19.50 Colors	
Challenged Harbour Patrol 22.00	

H.M.S. *Dundas*

sun
5th day

of *April*

19 *42* From *Cogswell* to *Cogswell*, and at *Cogswell*

Time	Log (stating type)	Distance Run		Mean Revs. per Minute	True Course	Gyro Compass Course	Standard Compass Course	Deviation	Variation	Wind		Weather and Visibility	Sea and Swell	Corrected Barometric Pressure in Millibars	Temperature °F			
		Miles	Tenths							Direction (true)	Force (0-12)				Dry Bulb	Wet Bulb	Sea	
0100																		
0200																		
0300																		
0400										NE	0	B6	00					
0500																		
0600																		
0700																		
0800										NE	0	B7	00					
0900																		
1000																		
1100																		
1200										SSE	1	B7	00					

Number on Sick List	Distance run through the Water	Zone Time kept at noon	Leave Granted to Ship's Company	Anchor Bearings
			LEAVE GRANTED TO NON DUTY WATCHES TILL 0730 MONDAY MORNING APRIL 6	

1300																		
1400																		
1500																		
1600										SE	2	B7	00					
1700																		
1800																		
1900																		
2000										SE	1	B7	00					
2100																		
2200																		
2300																		
2400										SE	1	B6	00					

REMARKS					Initials of the Officer of the Watch
<p>Hailed Harbour patrol 0145</p> <p>(Relief closed up)</p> <p>(Hailed Harbor Patrol 0555) 0645 Called Hands</p> <p>0705 Cooks to the Galley 0715 Hands to Breakfast</p> <p>Relief closed up</p> <p>hands fall in 0800 Colors 0903</p> <p>up spirits at 11.20 afternoon watchmen to dinner</p> <p>hands to dinner 12.15 (Relief Close up)</p>					

Position	Latitude	Longitude	Depending on	Currents experienced
0800				
1200				
2000				

12.45 Liberty men (7 ratings) 1.15 Liberty men (6 ratings)	
02.50 Timmer's tied up alongside	
Hands to tea 1500	
Hands to supper 17.50	
Duty watch fall in 19.15 Sunset 1950. Relief close up	
2200 Hailed Harbour Patrol	

DEC 17 1943

Handwritten initials

Handwritten initials

Time	Log (stating type)	Distance Run		Mean Revs. per Minute	True Course	Gyro Compass Course	Standard Compass Course	Deviation	Variation	Wind		Weather and Visibility	Sea and Swell	Corrected Barometric Pressure in Millibars	Temperature °F			
		Miles	Tenths							Direction (true)	Force (0-12)				Dry Bulb	Wet Bulb	Sea	
0100																		
0200																		
0300																		
0400										SE	1	B-6	00					
0500																		
0600																		
0700																		
0800										N.W.	1	B7	00					
0900																		
1000																		
1100																		
1200										SE	1	B-6	00					

Number on Sick List	Distance run through the Water	Zone Time kept at noon	Leave Granted to Ship's Company		Anchor Bearings
			Watchkeepers 1300 to 0930		
			Ship's company 1630 to 0730		
			C.P.O. = 1600 to 0800		

1300																		
1400																		
1500																		
1600										SE	1	B7	00					
1700																		
1800																		
1900																		
2000										SE	2	B6	00					
2100																		
2200																		
2300																		
2400										SE	2	B6	00					

REMARKS					Initials of the Officer of the Watch
Hailed Harbor Patrol 02.20					
06.20 Hailed Harbour Patrol					
0630 called hands 0650 cooks to galley 0700 Hands to Breakfast					
0800 Reliefs close up Hands fall in 0800					
Colors 0900.					
Hands to muster to bring supplies aboard 1000 Stand Easy 10.30					
Up Spirits and afternoon watchkeepers to dinner 1130. Hands to dinner 1200. Out Pipes 10.45. Cooks to galley 11.50					
Reliefs close up 1200.					

Position	Latitude	Longitude	Depending on	Currents experienced
0800				
1200				
2000				

1300	Watchkeepers, cooks Liberty men fall in 1300				
1400	up spirits 1305				
1500	hands fall in 1315				
1600	stand easy 1420 out pipes 1430				
1700	first dog watchmen to tea 1530				
1800	Secure 1.600 (relief closed up) Hands to tea				
1900	(16 ³⁰ first liberty boat 4 ratings) 1730 2 nd liberty boat ratings				
2000	(1745 B. Lewis returned to ship from sick Bay at Naden I)				
2100	(1845 Hands to supper.) 1930 Duty watch fall in (lean for Rounds)				
2200	(Sunset 19.56) (Rounds. Consect. 2000) (Reliefs Close up)				
2300	Hailed Harbour patrol 22.15				
2400	24.00 (Relief closed up)				

H.M.S. *DUNDAS*

Luc
7th day of April

Time	Log (stating type)	Distance Run		Mean Revs. per Minute	True Course	Gyro Compass Course	Standard Compass Course	Deviation	Variation	Wind		Weather and Visibility	Sea and Swell	Corrected Barometric Pressure in Millibars	Temperature °F			
		Miles	Tenths							Direction (true)	Force (0-12)				Dry Bulb	Wet Bulb	Sea	
0100																		
0200																		
0300																		
0400										SE	7	B6	00					
0500																		
0600																		
0700																		
0800										S	2	B7	00					
0900																		
1000																		
1100																		
1200										SE	3	B6	00					

Number on Sick List	Distance run through the Water	Zone Time kept at noon	Leave Granted to Ship's Company <i>Chiefs P.O. 1600 to 0800 Watchkeepers 1300 to 0800 Ship's Company 16.30 to 0730 White Watch Duty.</i>	Anchor Bearings
---------------------	--------------------------------	------------------------	---	-----------------

1300																		
1400																		
1500																		
1600										SE	2	B6	00					
1700																		
1800																		
1900																		
2000										SE	2	B6	00					
2100																		
2200																		
2300																		
2400										SE	1	B6	00					

1942 From *Esquimalt* to , and at *Esquimalt*

REMARKS					Initials of the Officer of the Watch
<p>0120 Challenged Harbour Patrol. (wind getting a little stronger.)</p> <p>(Reliefs Closed up 0400)</p> <p>Lit Galley stove 0500 Wake Duty Cook 0530</p> <p>Hailed Harbour patrol 0610 Called hands 0630 Cooks to Galley 0650 Hands to Breakfast 0730</p> <p>Relief closed up 0800 0830 Out pipes & hands fall in</p> <p>2 V.M.D. men working in the engine room, 0830 5 V.M.D. in Engine room</p> <p>0840 2 V.M.D. men working in Engine room. 5 V.M.D. Workers on ship 1030</p> <p>Stand easy 1015 Out Pipes 1030 1130 up Spirals & Afternoon Watchmen to dinner. 1150 Cooks to the Galley.</p>					

Position	Latitude	Longitude	Depending on	Currents experienced
0800				
1200				
2000				

1300																		
1400																		
1500																		
1600																		
1700																		
1800																		
1900																		
2000																		
2100																		
2200																		
2300																		
2400																		

CAPTAIN (D)
DEC 17 1942

ABME.

ABME.

H.M.S. *DUNDAS*

Wed
8 day *APRIL* of

Time	Log (stating type)	Distance Run		Mean Revs. per Minute	True Course	Gyro Compass Course	Standard Compass Course	Deviation	Variation	Wind		Weather and Visibility	Sea and Swell	Corrected Barometric Pressure in Millibars	Temperature °F			
		Miles	Tenths							Direction (true)	Force (0-12)				Dry Bulb	Wet Bulb	Sea	
0100																		
0200																		
0300																		
0400										E	1	B6	00					
0500																		
0600																		
0700																		
0800										NW	1	B6	00					
0900																		
1000																		
1100																		
1200										SW	2	B7	00					

Number on Sick List	Distance run through the Water	Zone Time kept at noon	Leave Granted to Ship's Company		Anchor Bearings
			Chs. and P.O.s 1600 till 1800 Watchkeepers - 1300 till 1000 Red & White watches - 1830-0730		

1300																		
1400																		
1500																		
1600										N.	1	B7	00					
1700										N	1	B.7	00					
1800																		
1900																		
2000										N	1	B6	00					
2100																		
2200																		
2300																		
2400										NW	1	B6	00					

1942. From *Esquimalt* to , and at *Esquimalt*.

REMARKS					Initials of the Officer of the Watch
0255 Hailed Harbour Patrol					
(Reliefs closed up)					
Hailed Harbour Patrol 0540.					
Called Hands 0630 Cooks to galley 0650 Hands to breakfast 0700					
Courtney left jetty at 0735. Relief closed up.					
Carquet left jetty 0800 0900 Colours.					
Ship's Company muster overcoats 0900					
10.15 Stand Easy 1030 Out Pipes 1130 Up spirts - afternoon watchmen					
to dinner 1150 Cooks to the Galley Reliefs closed up.					

Position	Latitude	Longitude	Depending on	Currents experienced
0800				
1200				
2000				

CAPTAIN (D)
RALPH
DEC 17 1943

1300	Out pipes 1310 Clear lower decks 1315. Warrant 75				
1400	was read off before ship company 1330 Watchkeepers Liberty men				
1500	fall in. Stand Easy 1420 Out pipes 1430 (1505 fire in Sig mess)				
1600	1545 Leave clear up decks Relief closed up.				
1700	Liberty men fall in 1630				
1800	Liberty men fall in 1730				
1900	Cooks to galley 1800				
2000	Liberty men fall in 1830				
2100	Liberty men fall in 1920				
2200	1952 sunset Rounds 2000 (Relief closed up)				
2300	Hailed Harbour Patrol 2100				
2400	V.M.D. Workmen all off ship 2200 2230 Pipe Down				
	Reliefs closed up. 2400				

Time	Log (stating type)	Distance Run		Mean Revs. per Minute	True Course	Gyro Compass Course	Standard Compass Course	Deviation	Variation	Wind		Weather and Visibility	Sea and Swell	Corrected Barometric Pressure in Millibars	Temperature °F			
		Miles	Tenths							Direction (true)	Force (0-12)				Dry Bulb	Wet Bulb	Sea	
0100																		
0200																		
0300																		
0400										NW	1	B6	00					
0500																		
0600																		
0700																		
0800										NW	2	B6	00					
0900																		
1000																		
1100																		
1200										NW	0	B7	00					

Number on Sick List	Distance run through the Water	Zone Time kept at noon	Leave Granted to Ship's Company	Anchor Bearings
			Chs and P.O. 1600-0800 Watchkeepers - 1300-1000 White & Blue watches - 1630-0730	

1300																		
1400																		
1500																		
1600										NW	1	B6	00					
1700																		
1800																		
1900																		
2000										W	1	B6	00					
2100																		
2200																		
2300																		
2400										E	2	B6	00					

REMARKS	Initials of the Officer of the Watch
<i>Hailed harbour patrol 0130</i>	
<i>Hailed harbor Patrol 0605</i>	
<i>0630 Called Hands 0650 Cooks to the Galley</i>	
<i>0700 Hands to Breakfast 0800 Relief Closed up - Hands fall in hands fall in 0800 (Carquet left harbour 0845) Colors at 0900</i>	
<i>Stand easy 1015 out Pipes 1030</i>	
<i>0070 (family) docked at ordnance battery 1115 out canvas cover afternoon watchmen to dinner 1130 (supper) 1115</i>	
<i>Secure 1245 hand. to dinner 1200 (Relief closed up)</i>	

Position	Latitude	Longitude	Depending on	Currents experienced
0800				
1200				
2000				

<i>0100 Watchkeepers liberty men (2 ratings) 1305 out Pipes</i>	
<i>1310 Hands fall in 1420 Stand Easy 1430 out Pipes</i>	
<i>1545 Secure 1530 Hands to 4" Gun Drill</i>	
<i>Reliefs closed up</i>	
<i>Liberty Boat 1630 (5 ratings) Liberty Boat 1730 (5 ratings)</i>	
<i>Cooks to the galley 1750 Hands to supper 1800</i>	
<i>Liberty Boat 1830 (5 ratings) Duty Watch fall in 1930</i>	
<i>Sunset 1956 Rounds 2000 Relief close up</i>	
<i>2230 Pipe Down Hailed Harbour Patrol 2115</i>	
<i>2400 Relief closed up</i>	
<i>Timmers left Harbour 2400</i>	

H.M.S. DUNDAS

1942 day 10th of APRIL

19 42 From ESQUIMALT to , and at ESQUIMALT.

Time	Log (stating type)	Distance Run		Mean Revs. per Minute	True Course	Gyro Compass Course	Standard Compass Course	Deviation	Variation	Wind		Weather and Visibility	Sea and Swell	Corrected Barometric Pressure in Millibars	Temperature °F		
		Miles	Tenths							Direction (true)	Force (0-12)				Dry Bulb	Wet Bulb	Sea
0100																	
0200																	
0300																	
0400										N	1	B6	00				
0500																	
0600																	
0700																	
0800										S	1	67	00				
0900																	
1000																	
1100																	
1200										NE	1	B65	00				

0100

0200

0300

0400 Hailed Harbour Patrol 0230

0500 Hailed Harbour Patrol 0530 0630 Called Hands 0650 Cooks to the Galley 0700 Hands to breakfast 0800 Relief closed up 0615 Prince David and Kelowna leave harbour

0800 Colors 0900 Courtney left Harbour 0910

0900 All Hands fall in aft. 0925 Stand Easy 1030 Out Pipes 1045

1000 Hands to Stations for leaving Harbour 1055

1100 up spirits cooks to the galley 1155 Hands to dinner 1200 Relief closed up.

Number on Sick List	Distance run through the Water	Zone Time kept at noon	Leave Granted to Ship's Company	Anchor Bearings
			From 1745 until 0730 in the morning	

Position	Latitude	Longitude	Depending on	Currents experienced
0800				
1200				
2000				

1300																	
1400																	
1500																	
1600			76.0							N	2	B67	00				49
1700																	
1800																	
1900																	
2000										NO	2	B66	00				49
2100																	
2200																	
2300																	
2400										N	0	B66	00				

1300 hands fall in 1325 Sub Contact stations 1330

1400 Stand easy 1440 Out Pipes 1450

1500 1530 First Day watchmen to tea

1600 Secure 1545 Hands to tea

1700 Reliefs close up 1555

1800 1740 tied up alongside the Courtenay. 1st liberty boat 1800

1900 1830 Hands to supper Liberty men fall in 1930 liberty men fall in

2000 1930 Duty watch fall in 2000 Still for Rounds

2100 Relief Closed up

2200 Hailed harbour patrol 2140

2300 Piped down 2230

2400 Reliefs closed up.

H.M.S. *DUNDAS*

Lat
day *11* of *April*

Time	Log (stating type)	Distance Run		Mean Revs. per Minute	True Course	Gyro Compass Course	Standard Compass Course	Deviation	Variation	Wind		Weather and Visibility	Sea and Swell	Corrected Barometric Pressure in Millibars	Temperature °F			
		Miles	Tenths							Direction (true)	Force (0-12)				Dry Bulb	Wet Bulb	Sea	
0100																		
0200																		
0300																		
0400										NW	0	B6	00		58	54	48	
0500																		
0600																		
0700																		
0800										S	2	B6	00		58	54	48	
0900																		
1000																		
1100																		
1200										W	3	B6	11		60	56	48	
Number on Sick List		Distance run through the Water		Zone Time kept at noon		Leave Granted to Ship's Company				Anchor Bearings								
						<i>Ship's Company Leave 1530 to 0700.</i>												
1300				<i>STOPPED</i>											58	55	48	
1400				<i>99.1</i>											62	60	48	
1500															56	54	48	
1600										SW	2	B.6	00		58	54	48	
1700															53	51	48	
1800															49	50	48	
1900															49	52	48	
2000										SW	2	B6	00		49	53	48	
2100															48	44	48	
2200															48	44	48	
2300															47	43	48	
2400										W	2	B6	00		45	43	48	

19 *42* From *Esquimalt* to _____, and at *Esquimalt*

REMARKS					Initials of the Officer of the Watch
<i>Hailed Harbor Patrol 0105</i>					
<i>(Relief Closed up)</i>					
<i>Hailed harbor patrol 0615</i>					
<i>Called hands 0630 works to galley 0650</i>					
<i>Hands to breakfast 0700</i>					
<i>0750 Hands to stations for leaving harbor; left our berth at</i>					
<i>0815. beached again at 0840; 0845. Hawsing aslates;</i>					
<i>0900 Colors; 0950 Hands to stations for leaving Harbor 0955 left</i>					
<i>berth; 1005 White Water closed up 1010 Stand easy 1020 out pipes</i>					
<i>1050 HC 95 alongside. 1330 UP Spits afternoon Watchmen to dinner relief closed up</i>					
Position	Latitude	Longitude	Depending on	Currents experienced	
0800					
1200					
2000'					
<i>Hands fall in 1310</i>					
<i>Hands to Station for entering Harbor 1410</i>					
<i>Beached alongside Vancouver at 1425 Stand Easy 1430 Out Pipes 1440</i>					
<i>Liberty Boat 1530 (4 ratings) Relief closed up</i>					
<i>to transport left harbor 1620 moved from old dry dock to (Courtney) ordnance petty</i>					
<i>Liberty Boat 1630</i>					
<i>Liberty Boat 1730 looks to galley 1800 Liberty boat 1830</i>					
<i>Leading stoker Fitzgerald went ashore at 1930</i>					
<i>1957 sunset rounds 2000</i>					
<i>Relief Closed up)</i>					
<i>Hailed Harbor Patrol 2310.</i>					
<i>Relief closed up</i>					

Time	Log (stating type)	Distance Run		Mean Revs. per Minute	True Course	Gyro Compass Course	Standard Compass Course	Deviation	Variation	Wind		Weather and Visibility	Sea and Swell	Corrected Barometric Pressure in Millibars	Temperature °F		
		Miles	Tenths							Direction (true)	Force (0-12)				Dry Bulb	Wet Bulb	Sea
0100															49	43	48
0200															49	43	48
0300															50	44	49
0400										N	0	B6	00		50	45	48
0500															47	43	48
0600															46	44	48
0700															45	44	49
0800										NO	2	R6	00		46	47	49
0900				132.6											49	45	49
1000				156.3											49	44	49
1100				89.1											52	49	49
1200				55.1						N	3	C5	00		53	50	49

Number on Sick List	Distance run through the Water	Zone Time kept at noon	Leave Granted to Ship's Company	Anchor Bearings
			<i>no leave.</i>	

1300															56	52	49
1400															56	52	49
1500															58	54	49
1600										NW	3	B7	00		59	53	49
1700															58	53	49
1800															59	55	49
1900															57	53	49
2000										N	1	B7	00		58	52	49
2100															53	50	49
2200															50	50	49
2300															50	49	49
2400										NW	1	D5	00		49	49	49

REMARKS		Initials of the Officer of the Watch
<i>Hailed Harbour patrol 2420</i>		
<i>(Relief closed up)</i>		
<i>0515 fine rain falling</i>		
<i>rain falling Hailed Harbour Patrol 0555</i>		
<i>0630 Called Hands 0650 Cooks to the Galley; 0700 Hands to Breakfast 0750 Close all scuttles 0800 Relief closed up</i>		
<i>0800 Hands to stations for leaving harbour; 0808 slipped boxes 0810 Hands fall in</i>		
<i>Stand Easy 1035 Out Pipes 1050 1130 Up Spinks left watchmen to dinner 1150 Cooks to the Galley 1200 Hands to dinner reliefs close up</i>		

Position	Latitude	Longitude	Depending on	Currents experienced
0800				
1200				
2000				

1300	<i>Berthed at Oil Jetty to take on fuel at 1235. No smoking on deck while taking on fuel 1235. Finished fueling left Oil Jetty 1310.</i>			
1400	<i>Berthed No 9 Jetty 1335. Piped no leave 1340.</i>			
1500	<i>Stand Easy 1420. Out Pipes 1430. Secure 1545.</i>			
1600	<i>Relief closed up 1600 1800 Cooks to the Galley</i>			
1700	<i>1900 Piped Canteen leave non duty watches; 1930 Party Watch fall in</i>			
1800	<i>2000 Sunset - Rounds / Relief closed up 2000</i>			
1900				
2000				
2100				
2200	<i>Hailed Harbour Patrol 2225 Pipe Down lights out 2230.</i>			
2300				
2400	<i>Relief closed up 2400.</i>			

Time	Log (stating type)	Distance Run		Mean Revs. per Minute	True Course	Gyro Compass Course	Standard Compass Course	Deviation	Variation	Wind		Weather and Visibility	Sea and Swell	Corrected Barometric Pressure in Millibars INCHES	Temperature °F		
		Miles	Tenths							Direction (true)	Force (0-12)				Dry Bulb	Wet Bulb	Sea
0100															50	46	49
0200															50	47	49
0300															50	47	49
0400										NW	3	D6	00		50	47	49
0500															50	47	49
0600															50	47	49
0700															50	47	49
0800										SW	2	D6	00		50	47	49
0900														29.61	51	47	49
1000														29.61	52	50	49
1100														29.64	54	50	49
1200										NE	3	D6	00	29.65	56	50	49

Number on Sick List	Distance run through the Water	Zone Time kept at noon	Leave Granted to Ship's Company	Anchor Bearings
			1630 to 0730 15 th	
			Chiefs P.O. 0800 15 th	

1300														29.65	55	50	49
1400														29.65	54	49	49
1500														29.66	55	50	49
1600										NE	0	C7	00	29.69	60	52	49
1700														29.70	61	55	49
1800														29.72	55	50	49
1900														29.71	55	49	49
2000										NE	0	C7	00	29.72	54	48	49
2100										1				29.75	54	49	49
2200														29.76	51	49	49
2300														29.77	52	48	49
2400														29.78	51	49	49

REMARKS	Initials of the Officer of the Watch
Hailed Harbour Patrol 0255 (0400 Relief closed up)	
Hailed Harbour Patrol 0550. Called Hands 0630 Cooks to the galley 0650. Hands to breakfast 0700. Courtney left Berth 0745. Sans Pew tied up Yarnows Jitty (0735) 0755 Out Pipes 0800 Hands fall in Relief closed up. 0900 - Colors 1015 Hand easy 1030 Out Pipes 1130 aft. watchmen to dinner 1145 to 1150 Cooks to the galley 1200 Hands to dinner Relief closed up	

Position	Latitude	Longitude	Depending on	Currents experienced
0800				
1200				
2000				

Hands to stations for leaving harbour 1250 tied up at berth 5 1310 Stand easy 1420 out pipes 1430 Secure 1545 hands to tea 1600 Relief closed up Liberty men fall in Black list men fall in 1730 Liberty men fall in 1830 Black list men secure
1930 Duty Watch fall in Reliefs Closed up. Class 2005 Sunset Luller Hailed harbour patrol 2145 pipe down 2230 (Reliefs Close up)

H.M.S. Dundas

Wed 15 day

of April

Time	Log (stating type)	Distance Run		Mean Revs. per Minute	True Course	Gyro Compass Course	Standard Compass Course	Deviation	Variation	Wind		Weather and Visibility	Sea and Swell	Corrected Barometric Pressure in Millibars INCHES.	Temperature °F		
		Miles	Tenths							Direction (true)	Force (0-12)				Dry Bulb	Wet Bulb	Sea
0100														29.80	47	44	49
0200														29.81	47	45	49
0300														29.84	46	45	49
0400										N.W	4	cl	00	29.87	46	44	49
0500														29.86	47	45	49
0600														29.86	46	45	49
0700														29.87	45	45	49
0800										NW	3	cl	00	29.91	48	46	49
0900														29.91	50	57	49
1000														29.91	54	50	49
1100														29.92	56	50	49
1200										E	2	cl	00	29.92	57	50	49

Number on Sick List	Distance run through the Water	Zone Time kept at noon	Leave Granted to Ship's Company	Anchor Bearings
			Blue & White Watches - 16.30-0730 Chs. and P.O.s - 16.00-0800 Watchkeepers - 13.00-1000	

1300														29.91	58	52	49
1400														29.91	60	54	49
1500														29.90	62	55	49
1600										NW	4	cl	00	29.89	61	54	49
1700														29.88	60	54	49
1800														29.87	59	53	49
1900														29.87	57	52	49
2000										SW	1	B'5	00	29.86	56	50	49
2100														29.86	53	49	49
2200														29.86	51	47	49
2300														29.83	51	49	49
2400										SE	2	B'6	00	29.82	52	49	49

19 42 From Esquimalt to , and at Esquimalt

REMARKS					Initials of the Officer of the Watch
Hailed Harbor Patrol 0145.					
Reliefs Closed up					
Hailed harbour patrol 0600. Called Blacklistmen 0600 Called hands 0630 hands to breakfast 0700 0805 Hands to slip Wolfe from alongside. Colours. Stand easy 1015; Out Pipes 1030 Up Spirits & afternoon watchmen to dinner: 1145 Secure. 1150 Cooks to the Galley 1200 Hands to Dinner Relief Close up					

Position	Latitude	Longitude	Depending on	Currents experienced
0800				
1200				
2000				

1300					Liberty men 4 ratings 1305 Out Pipes 1310 Hands fall in
1400					1420 Stand easy 1430 Out Pipes
1500					1545 Secure 1600 Reliefs close up
1600					Liberty men 1630 (4 ratings)
1700					Liberty men 1730 (3 ratings)
1800					Cooks to Galley 1750 Hands to supper 1800
1900					Liberty men 1830 (3 ratings)
2000					Liberty men 1930 (2 ratings) Duty watch fall in 1830
2100					2000 Reliefs close up 2004 Sunset 2030 Pipe Down
2200					Hailed Harbour Patrol 2330 2400 Relief closed up

H.M.S.

"Dundas"

day 17 of April

Fri

Time	Log (stating type)	Distance Run		Mean Revs. per Minute	True Course	Gyro Compass Course	Standard Compass Course	Deviation	Variation	Wind		Weather and Visibility	Sea and Swell	Corrected Barometric Pressure in Millibars INCHES.	Temperature °F		
		Miles	Tenths							Direction (true)	Force (0-12)				Dry Bulb	Wet Bulb	Sea
0100														29.80	42	44	48
0200														29.82	47	49	48
0300														29.83	46	40	48
0400										SW	1	B ^c 7 00		29.85	46	41	48
0500														29.87	42	39	48
0600														29.87	43	40	48
0700														29.86	44	41	49
0800										W	1	B ^c 7 00		29.86	46	43	50
0900														29.86	42	45	50
1000														29.87	49	46	50
1100														29.90	59	54	50
1200										E	1	B ^c 6 00		29.90	58	54	50

Number on Sick List	Distance run through the Water	Zone Time kept at noon	Leave Granted to Ship's Company		Anchor Bearings
			Ships Company 1630 to 0730 Watchkeepers 1300 to 1000 Chief + P.O. 1600 to 0800.		

1300														29.91	57	51	48
1400														29.93	59	53	48
1500														29.94	60	53	48
1600										S	1	B ^c 6 00		29.95	62	54	48
1700														29.96	54	49	48
1800														29.97	52	49	49
1900														29.98	51	47	49
2000										E	1	E 6 00		30.01	47	47	49
2100														30.02	48	47	49
2200														30.04	49	46	49
2300														30.05	48	45	49
2400										NE	1	00		30.07	47	44	49

19 42

From Esquimaux to

, and at Esquimaux

REMARKS					Initials of the Officer of the Watch
Hailed Harbour Patrol 0115					
Relief closed up 0540 Hailed Harbour Patrol					
0600 Called Black list men. 0630 Called Hands					
0650 Cooks to the Galley 0700 Hands to Breakfast					
0800 Relief Close up.					
Colors 0900					
Stand easy 1015 out papers 1030					
Up spirits afternoon watchkeepers to dinner 1130					
Secure 1150 1150 Cooks to Galley, hands to dinner 1200					

Position	Latitude	Longitude	Depending on	Currents experienced
0800				
1200				
2000				

Leave Piped. Watchkeeper Liberty men 1300 (2 ratings)				
Hands fall in 1310 Stand Easy 1420 Out Pipes 1430				
Unshipped Asdic Dome 1545				
Secure 1545 Relief closed up 1630 Liberty men 4 ratings				
1730 Liberty men 1 rating 1750 Cooks to the Galley 1800 Hands to supper				
1830 Liberty men 5 ratings 1930 Duty Watch fall in 2000 Relief closed up				
Sunset 2008 Rounds 2010				
Pipe Down 2230				
Hailed Harbour Patrol 2330				
Relief closed up				

H.M.S. *UNDAS*

Ann.
19 day of *April*

Time	Log (stating type)	Distance Run		Mean Revs. per Minute	True Course	Gyro Compass Course	Standard Compass Course	Deviation	Variation	Wind		Weather and Visibility	Sea and Swell	Corrected Barometric Pressure in <i>mm</i> INCHES.	Temperature °F		
		Miles	Tenths							Direction (true)	Force (0-12)				Dry Bulb	Wet Bulb	Sea
0100														30.17	52	47	49
0200														30.14	51	47	49
0300														30.13	50	47	49
0400										NE	1	B ^c 6	00	30.10	58	47	49
0500														30.10	52	49	49
0600														30.10	52	48	49
0700														30.09	53	49	49
0800										NE	1	B ^c 6	10	30.08	53	48	49
0900														30.06	55	49	49
1000														30.04	56	49	49
1100														30.04	59	51	50
1200										NW	2	B ^c 6	00	30.03	60	52	50

Number on Sick List	Distance run through the Water	Zone Time kept at noon	Leave Granted to Ship's Company <i>Red watch 1230 to 0730 Monday Watchkeepers 1230 to 1000 Monday</i>	Anchor Bearings
---------------------	--------------------------------	------------------------	--	-----------------

1300														30.01	64	54	50
1400														29.97	66	56	50
1500														29.97	67	56	50
1600										NW	1	B ^c 6	00	29.97	67	55	50
1700														29.93	67	55	50
1800														29.91	67	56	50
1900														29.87	64	56	50
2000										N	1	B ^c 6	00	29.86	62	55	50
2100														29.86	61	55	50
2200														29.86	59	55	50
2300														29.86	57	53	49
2400										SE	1	B ^c 6	00	29.85	58	54	49

19 *42* From *Esquimalt* to , and at *Esquimalt*

REMARKS	Initials of the Officer of the Watch
<i>Hailed Harbour Patrol 0130</i>	
<i>Relief Closed up</i>	
<i>Hailed Harbour patrol 0600</i>	
<i>Called hands 6.45. Cooks to galley 0705</i>	
<i>hands to breakfast 0715 0805 Hands to Betty Bayfield</i>	
<i>lines slip 0815 Hands fall in 0900 Colours 0915 Science</i>	<i>P.P.</i>
<i>Hands to take lines for the Timmer's berth 4. 1015</i>	
<i>1105 Wolf tied up on berth 6 1130 afternoon watchmen to dinner Spits</i>	
<i>1150 Cooks to the Galley 1200 Dinner Relief closed up</i>	<i>B.W.</i>

Position	Latitude	Longitude	Depending on	Currents experienced
0800				
1200				
2000				

<i>1230 Liberty men fall in (4 ratings) 1300 Liberty men fall in 5 ratings</i>	
<i>1330 (1) liberty man</i>	
<i>1600 Relief closed up. Hands to tea 1600</i>	
<i>Hands to supper 1730.</i>	
<i>Duty Watch fall in 1930.</i>	
<i>Relief closed up. Sunset 2008</i>	
<i>2230 Pipe Down Hailed Harbour Patrol 2240</i>	
<i>2400 Relief closed up</i>	<i>B.W.</i>

CAPTAIN (D)
HALIFAX
DEC 17 1943

H.M.S. *Rundas*

wed

22 day of April

Time	Log (stating type)	Distance Run		Mean Revs. per Minute	True Course	Gyro Compass Course	Standard Compass Course	Deviation	Variation	Wind		Weather and Visibility	Sea and Swell	Corrected Barometric Pressure in Millibars	Temperature °F		
		Miles	Tenths							Direction (true)	Force (0-12)				Dry Bulb	Wet Bulb	Sea
0100														1013	45	41	51
0200														1013	45	42	50
0300														1013	44	42	50
0400										SW	2	D6	00	1013	43	42	50
0500														1013	43	41	50
0600														1014	43	40	50
0700														1013	44	40	50
0800										SW	2	B7	00	1015	54	47	50
0900														1016	62	52	50
1000														1016	65	54	50
1100														1016	62	51	50
1200										S	2	B7	00	1017	63	52	50

Number on Sick List	Distance run through the Water	Zone Time kept at noon	Leave Granted to Ship's Company		Anchor Bearings
			Watchkeepers 1300 - 1000 H.M.S. Red & Blue watches 1630 - 0730 chiefs + P.O. 0800		

1300														1017	59	52	50
1400														1016	60	50	50
1500														1016	59	50	50
1600										N	5	AS6	00	1017	59	50	50
1700														1017	47	45	50
1800														1017	48	46	50
1900														1017	48	45	50
2000										S	2	cl	00	1019	47	44	50
2100														1019	49	45	50
2200														1020	48	44	50
2300														1019	48	43	50
2400										S	1	B6	00	1021	47	44	50

1942

From V.M.D.

to

, and at V.M.D.

REMARKS					Initials of the Officer of the Watch
0400 Relief closed up					
Call Hands 0630					
Cooks to galley 0650 Hands to breakfast 0700					
Close scuttles Hands to Stations for leaving Harbour 0730					
Berthed No. 9 petty 0815 Relief closed up 0830 Hands fall in					
0900 Colours 0945 - HARD SAILED 0955 - 0966 - 0968 - 0970 Sailed					
0945 S.D. party down to rig of day 1015 Hand easy - 9.5 party fall in 1030 Cut Paper					
1130 40 spouts, aft watch down to diners 1150 Cooks to the Galley 1200 Hands to dinner					

Position	Latitude	Longitude	Depending on	Currents experienced
0800				
1200				
2000				

Hands fall in 1210				
stand easy 1420 Hands to stations 1430				
Moved to old refitting Cabin 1430 1530 moved to ordnance petty tied up in front of "Long gun" ammunition barge along side first dog watchmen to starboard 1545 Relief closed up				
1605 all ammunition on board ship 1730 Bayfield tied up alongside Hands to supper 1740 1800 liberty men fall in				
1900 liberty men fall in: 1930 Liberty men fall in 1930 Clean up for Rounds Rounds Relief closed up				
Sunset 2014				
Hailed harbour patrol 2210 Rize down 2230				
Relief closed up				

Time	Log (stating type)	Distance Run		Mean Revs. per Minute	True Course	Gyro Compass Course	Standard Compass Course	Deviation	Variation	Wind		Weather and Visibility	Sea and Swell	Corrected Barometric Pressure in Millibars	Temperature °F		
		Miles	Tenths							Direction (true)	Force (0-12)				Dry Bulb	Wet Bulb	Sea
0100														1021	47	45	50
0200														1022	45	42	50
0300														1022	46	43	50
0400										S 2	B6	00		1023	45	42	50
0500														1024	45	42	50
0600														1025	47	44	50
0700														1025	47	44	50
0800										S 1	B6	00		1025	50	46	50
0900														1024	55	46	50
1000														1024	63	53	50
1100														1024	55	46	50
1200										S 2	B6	00		1025	55	48	50

Number on Sick List	Distance run through the Water	Zone Time kept at noon	Leave Granted to Ship's Company	Anchor Bearings
			Red & White watch ^{15 30 to} 07 30 Chiefs + P.O. ^{15 30 to} 08 00 Watchkeepers ^{15 30 to} 10 00	

1300														1025	52	48	50
1400			163.0											1025	55	49	49
1500			131.5											1025	55	46	49
1600			133.5							NE. 2	B6	02		1024	55	47	48
1700														1023	56	48	50
1800														1022	55	47	50
1900														1021	56	49	50
2000										S 1	D.6	00		1020 1/2	54	48	50
2100														1019 1/2	52	48	50
2200														1018	49	47	50
2300														1018	51	47	50
2400										S 1	D.6	00		1017	50	46	50

REMARKS	Initials of the Officer of the Watch
Hailed Harbour Patrol 0105 watch correct w/s	
watch correct w/s	
watch correct w/s	
watch correct w/s	
Hailed Harbour patrol 0550	
Called hands 0630 0650 Cooks to galley	
Hands to breakfast 0700 hands fall in Relief closed up	
Bayfield slipped lines 0800 Colors 0900	
Stand easy 1015 1030 Out Pipes Bayfield ^{red up} 11.20 down Pen 1155	
1130 Up Spirits aft watchmen to dinner 1150 keens	
1200 Hands to dinner Relief closed up.	W.B.M.

Position	Latitude	Longitude	Depending on	Currents experienced
0800				
1200				
2000				

Hands to station for leaving Harbour 1230. Rig of day No 3.	
1420 Stand easy 1430 Out pipes	
1545 Secure 1555 Reliefs close up.	
1635 Hands station for leaving harbour	
1645 Birth 9 alongside Canoe Pipe leave 1700	
Liberty Men 1730 (2 ratings) Cooks to the galley 1750	
Hands to supper 1800 Liberty Men 1830 (6 ratings)	
Liberty ^{men} 1930 (3 ratings). Duty watch fall in.	
Sunset 2016 Ship alongside for air 2210 ?	
Hailed Harbour Patrol 2205 2230 Pipe Down	
2400 Relief closed up.	W.B.M.

Time	Log (stating type)	Distance Run		Mean Revs. per Minute	True Course	Gyro Compass Course	Standard Compass Course	Deviation	Variation	Wind		Weather and Visibility	Sea and Swell	Corrected Barometric Pressure in Millibars	Temperature °F		
		Miles	Tenths							Direction (true)	Force (0-12)				Dry Bulb	Wet Bulb	Sea
0100														1020	47	42	50
0200														1020	49	45	50
0300														1021	48	43	50
0400										S	1	B6	00	1021	49	45	50
0500														1021	47	44	50
0600														1021	46	44	50
0700														1021	46	45	50
0800										SE	1	B6	00	1021	47	44	50
0900					Vh on					NNW	1	C6	00	1022 3013	52	46	50
1000					Patrol duty									1024	53	47	50
1100														1024	60	55	50
1200				83.2						SE	1	B7	00	1024	55	50	48

Number on Sick List	Distance run through the Water	Zone Time kept at noon	Leave Granted to Ship's Company	Anchor Bearings
Nil.		Pacific Summer Time.	Nil	

1300														1022	54	49	48
1400														1021 1/2	63	54	48
1500														1021 1/2	59	53	48
1600										SE	1	B6	0	1021 1/2	58	50	48
1700					Vh on Patrol duty									1021	60	52	48
1800										SW	2	C8	0	1021	56	50	48
1900														1021	53	47	48
2000										SW	2	C7	00	1021	52	45	48
2100														1021	50	43	48
2200														1022	50	48	48
2300														1022	48	44	48
2400										SW	2	B7	00	1024	50	46	48

REMARKS															Initials of the Officer of the Watch
Hailed harbour patrol 0100															
Relief closed up															
Hailed Harbour Patrol 0545															
0630 Called Hands 0650 Cooks to the Galley															
0700 Hands to Breakfast															
0725 Engines slow ahead Duty watch watching lines Relief closed up															
Left bulk 4 0800. 0815 Red water to muster.															
pumped stand easy 1025 out pumps 1030															
1145 Secure Cooks to the Galley 1200 Hands to dinner Relief closed up															

Position	Latitude	Longitude	Depending on	Currents experienced	CAPTAIN (D) HALFAX DEC 17 1943
0800					
1200					
2000				Tidal	

1300														1022	54	49	48
1400														1021 1/2	63	54	48
1500														1021 1/2	59	53	48
1600										SE	1	B6	0	1021 1/2	58	50	48
1700					Vh on Patrol duty									1021	60	52	48
1800										SW	2	C8	0	1021	56	50	48
1900														1021	53	47	48
2000										SW	2	C7	00	1021	52	45	48
2100														1021	50	43	48
2200														1022	50	48	48
2300														1022	48	44	48
2400										SW	2	B7	00	1024	50	46	48

1600 Pipe Down 1300.
1600 H
1600 Hands to tea Relief closed up
1750 Cooks to the Galley 1800 Hands to supper
Darken ship 1925 No smoking above decks 1955
action stations 2000 Secure 2020. 2030 Engines Stopped
2230 Pipe Down.
2400 Relief closed up

H.M.S. Dundas

26th day

of April

19 42

From Esquimaux to

, and at

Time	Log (stating type)	Distance Run		Mean Revs. per Minute	True Course	Gyro Compass Course	Standard Compass Course	Deviation	Variation	Wind		Weather and Visibility	Sea and Swell	Corrected Barometric Pressure in Millibars	Temperature °F		
		Miles	Tenths							Direction (true)	Force (0-12)				Dry Bulb	Wet Bulb	Sea
0100				60.7										1024	49	47	48
0200				61.6						ESE	1	bc. 8		1024	49	45	48
0300				55.5										1024	48	44	48
0400				55.4						SW	1	bc. 7		1024	49	45	48
0500				64.0										1022	49	46	50
0600				47.6						ESE	1	bc. 8		1021	49	45	50
0700				60.7										1021	49	46	50
0800				59.1										1020 1/2	51	47	50
0900				99.2										1021	57	51	49
1000				79.5										1021 1/2	57	50	49
1100				55.3										1020	54	49	49
1200				60.6						SE	1	C 7		1019 1/2	54	49	49
Number on Sick List		Distance run through the Water		Zone Time kept at noon		Leave Granted to Ship's Company				Anchor Bearings							
Nil.		/		Pacific Summer time.		Nil				/							
1300				61.3										1019	54	48	49
1400				60.7										1018	52	48	49
1500				62.4						SE	1	0.6	0.	1018	55	49	49
1600				65.7										1017	55	48	49
1700				53.0										1017	52	46	49
1800				82.4						airs	0	0. vis 6	0.	1016	55	50	49
1900				73.2										1016	55	50	49
2000				55.9										1015	52	49	49
2100				87.0										1014	51	47	45
2200				86.5										1013 1/2	50	46	45
2300				69.5										1011 1/2	49	44	45
2400				67.6						SE	3	C 7	01	1011 1/2	49	44	45

REMARKS

Called hands at 0630. Cooks to the Galley 0650.
 Hands to breakfast 0700. 0755 Out Pipes - 0800 Hands fell in.
 Challenged US Freighter 0830 Pipe down 0915

11.30 40 spirits aft watchmen to dinner 1450 Cooks to the Galley
 1200 Hands to dinner Reliefs close up.

Position	Latitude	Longitude	Depending on	Currents experienced
0800				
1200				
2000				Tidal

hands to tea 1600
 Reliefs closed up

hands to supper 1800

Reliefs closed up
 Darken ship 2015 all dry clothes to be removed from boiler rooms.
 Action stations 2030. Secure 2040
 Pipe Down 2230
 Relief closed up.

H.M.S. Dundas

27 day of April/42

Time	Log (stating type)	Distance Run		Mean Revs. per Minute	True Course	Gyro Compass Course	Standard Compass Course	Deviation	Variation	Wind		Weather and Visibility	Sea and Swell	Corrected Barometric Pressure in Millibars	Temperature °F		
		Miles	Tenths							Direction (true)	Force (0-12)				Dry Bulb	Wet Bulb	Sea
0100				56.2										1011	48	45	49
0200				62.8										1010	47	45	49
0300				63.0										1009	46	45	49
0400				62.0						ESE	4	C6	0.1	1008	45	45	49
0500				65.1										1007	49	42	49
0600				63.5						ESE	3	C. 6	0.1	1007	45	43	49
0700				93.3										1007	46	44	49
0800				72.7										1006	51	46	49
0900				69.1										1006	50	45	48
1000				93.3										1005	51	46	48
1100				165.0										1005	54	50	48
1200	log streamed			165.0						SE	2	C. 6	0.	1005	55	49	48

Number on Sick List	Distance run through the Water	Zone Time kept at noon	Leave Granted to Ship's Company		Anchor Bearings
			Ships Company	Chiefs + P.O.	
	60 mls.	Pacific Summer time	Red watch 1520 to 0800	Blue " 1520 to 0830	

1300	log in board	18.0	165.0											1006	59	50	48
1400														1005 1/2	61	53	48
1500														1005 1/2	60	52	48
1600										W.	1	C6	00	1005 1/2	59	53	48
1700														1005 1/2	58	50	48
1800														1006	58	51	48
1900														1005 1/2	56	50	48
2000										W	1	C6	00	1007	55	49	48
2100														1007	52	49	48
2200														1007	51	49	48
2300														1007	50	48	48
2400										N.	1	C6	00	1007	50	47	48

1942 From Esquimalt to , and at Vancouver

REMARKS	Initials of the Officer of the Watch
0630 Called Hands 0650 Cooks to Galley. 0700 Breakfast.	W.B.H.
0755 Out pipes	
0800 Hands fall in. Reliefs closed up.	W.B.H.
stand easy 1015 out pipes 1030	
up spirit after matches to dinner 1130	
Secure 1745 hands to dinner 1200	W.B.H.

Position	Latitude	Longitude	Depending on	Currents experienced
0800				
1200				
2000				Tidal

0	Hands fall in 1310. Rig of the day No 3. Close all scuttles	
5	Leading Hand and two ratings to take in electric log.	
10	Hands to stations for entering Harbour 1325.	
15	Secured to Pier A 2 1350. Liberty men 1520 (33 ratings) Relief closed up	W.B.H.
20	1730 Hands to supper	
25	2010 sunset Relief closed up	W.B.H.
30	Pipe Down 2230	
35	Relief closed up	W.B.H.

H.M.S.

Rundas

Wed
29 day

of *April*

Time	Log (stating type)	Distance Run		Mean Revs. per Minute	True Course	Gyro Compass Course	Standard Compass Course	Deviation	Variation	Wind		Weather and Visibility	Sea and Swell	Corrected Barometric Pressure in Millibars	Temperature °F		
		Miles	Tenths							Direction (true)	Force (0-12)				Dry Bulb	Wet Bulb	Sea
0100														1016	50	46	50
0200														1016½	49	44	50
0300														1016½	49	44	50
0400										SW	1	B6	00	1017	49	45	50
0500														1017½	50	45	50
0600														1018	48	44	50
0700														1018	49	45	50
0800										SW	1	B6	00	1016	54	50	50
0900														1017	55	50	50
1000														1017	52	48	50
1100														1016	56	50	50
1200										NE	1	B6	00	1015	58	52	50

Number on Sick List	Distance run through the Water	Zone Time kept at noon	Leave Granted to Ship's Company	Anchor Bearings
			Visual leave for Red & White watches 0730 Thursday GPO 0800 Watchkeepers 1000	Grant Knoll Sig. Tr. 170° 32' c. V. at single ⚓.

1300														1014½	60	54	50
1400														1014	61	54	50
1500														1013½	60	54	50
1600										NE	1	B6	00	1013	60	54	50
1700														1012	60	53	50
1800														1012	60	52	50
1900														1012½	59	51	50
2000										NE	1	B6	00	1012	47	50	50
2100														1012	47	49	50
2200														1012	51	49	50
2300														1012	50	48	50
2400										E	1	B6	00	1012	49	46	50

1942

From Esquumatt to

, and at Esquumatt

Time	Log (stating type)	Distance Run	Mean Revs. per Minute	True Course	Gyro Compass Course	Standard Compass Course	Deviation	Variation	Wind		Weather and Visibility	Sea and Swell	Corrected Barometric Pressure in Millibars	Temperature °F			REMARKS	Initials of the Officer of the Watch	
									Miles	Tenths				Direction (true)	Force (0-12)	Dry Bulb			Wet Bulb
0100														1016	50	46	50	Hailed harbor patrol 0100.	
0200														1016½	49	44	50		
0300														1016½	49	44	50		
0400										SW	1	B6	00	1017	49	45	50	Relief closed up	
0500														1017½	50	45	50		
0600														1018	48	44	50	Hailed harbor patrol 0645	
0700														1018	49	45	50	Called hands 0630 Cooks to galley 0650 Rig of day # 3's	
0800										SW	1	B6	00	1016	54	50	50	Close all scuttles 0730 Hands to stations for changing belt	
0900														1017	55	50	50	0755: Left belt 0800: Oil Jetty 0810: 0825 Hands fall in. Piped No smoking	
1000														1017	52	48	50	on deck while ship is being fueled: 0855 Taking on oil: 0900 Colors (Died up) 0935	
1100														1016	56	50	50	Left oil jetty 0955. Dropped anchor 1005 1015 Stand Easy 1030 Out pipes	
1200										NE	1	B6	00	1015	58	52	50	Secure P.S. 1100 P.S. 1130 P.S. 1145 P.S. 1150 P.S. 1200 P.S. 1215 P.S. 1230 P.S. 1245 P.S. 1300 P.S. 1315 P.S. 1330 P.S. 1345 P.S. 1400 P.S. 1415 P.S. 1430 P.S. 1445 P.S. 1500 P.S. 1515 P.S. 1530 P.S. 1545 P.S. 1600 P.S. 1615 P.S. 1630 P.S. 1645 P.S. 1700 P.S. 1715 P.S. 1730 P.S. 1745 P.S. 1800 P.S. 1815 P.S. 1830 P.S. 1845 P.S. 1900 P.S. 1915 P.S. 1930 P.S. 1945 P.S. 2000 P.S. 2015 P.S. 2030 P.S. 2045 P.S. 2100 P.S. 2115 P.S. 2130 P.S. 2145 P.S. 2200 P.S. 2215 P.S. 2230 P.S. 2245 P.S. 2300 P.S. 2315 P.S. 2330 P.S. 2345 P.S. 2400 P.S. 2415 P.S. 2430 P.S. 2445 P.S. 2500 P.S. 2515 P.S. 2530 P.S. 2545 P.S. 2600 P.S. 2615 P.S. 2630 P.S. 2645 P.S. 2700 P.S. 2715 P.S. 2730 P.S. 2745 P.S. 2800 P.S. 2815 P.S. 2830 P.S. 2845 P.S. 2900 P.S. 2915 P.S. 2930 P.S. 2945 P.S. 3000 P.S. 3015 P.S. 3030 P.S. 3045 P.S. 3100 P.S. 3115 P.S. 3130 P.S. 3145 P.S. 3200 P.S. 3215 P.S. 3230 P.S. 3245 P.S. 3300 P.S. 3315 P.S. 3330 P.S. 3345 P.S. 3400 P.S. 3415 P.S. 3430 P.S. 3445 P.S. 3500 P.S. 3515 P.S. 3530 P.S. 3545 P.S. 3600 P.S. 3615 P.S. 3630 P.S. 3645 P.S. 3700 P.S. 3715 P.S. 3730 P.S. 3745 P.S. 3800 P.S. 3815 P.S. 3830 P.S. 3845 P.S. 3900 P.S. 3915 P.S. 3930 P.S. 3945 P.S. 4000 P.S. 4015 P.S. 4030 P.S. 4045 P.S. 4100 P.S. 4115 P.S. 4130 P.S. 4145 P.S. 4200 P.S. 4215 P.S. 4230 P.S. 4245 P.S. 4300 P.S. 4315 P.S. 4330 P.S. 4345 P.S. 4400 P.S. 4415 P.S. 4430 P.S. 4445 P.S. 4500 P.S. 4515 P.S. 4530 P.S. 4545 P.S. 4600 P.S. 4615 P.S. 4630 P.S. 4645 P.S. 4700 P.S. 4715 P.S. 4730 P.S. 4745 P.S. 4800 P.S. 4815 P.S. 4830 P.S. 4845 P.S. 4900 P.S. 4915 P.S. 4930 P.S. 4945 P.S. 5000 P.S. 5015 P.S. 5030 P.S. 5045 P.S. 5100 P.S. 5115 P.S. 5130 P.S. 5145 P.S. 5200 P.S. 5215 P.S. 5230 P.S. 5245 P.S. 5300 P.S. 5315 P.S. 5330 P.S. 5345 P.S. 5400 P.S. 5415 P.S. 5430 P.S. 5445 P.S. 5500 P.S. 5515 P.S. 5530 P.S. 5545 P.S. 5600 P.S. 5615 P.S. 5630 P.S. 5645 P.S. 5700 P.S. 5715 P.S. 5730 P.S. 5745 P.S. 5800 P.S. 5815 P.S. 5830 P.S. 5845 P.S. 5900 P.S. 5915 P.S. 5930 P.S. 5945 P.S. 6000 P.S. 6015 P.S. 6030 P.S. 6045 P.S. 6100 P.S. 6115 P.S. 6130 P.S. 6145 P.S. 6200 P.S. 6215 P.S. 6230 P.S. 6245 P.S. 6300 P.S. 6315 P.S. 6330 P.S. 6345 P.S. 6400 P.S. 6415 P.S. 6430 P.S. 6445 P.S. 6500 P.S. 6515 P.S. 6530 P.S. 6545 P.S. 6600 P.S. 6615 P.S. 6630 P.S. 6645 P.S. 6700 P.S. 6715 P.S. 6730 P.S. 6745 P.S. 6800 P.S. 6815 P.S. 6830 P.S. 6845 P.S. 6900 P.S. 6915 P.S. 6930 P.S. 6945 P.S. 7000 P.S. 7015 P.S. 7030 P.S. 7045 P.S. 7100 P.S. 7115 P.S. 7130 P.S. 7145 P.S. 7200 P.S. 7215 P.S. 7230 P.S. 7245 P.S. 7300 P.S. 7315 P.S. 7330 P.S. 7345 P.S. 7400 P.S. 7415 P.S. 7430 P.S. 7445 P.S. 7500 P.S. 7515 P.S. 7530 P.S. 7545 P.S. 7600 P.S. 7615 P.S. 7630 P.S. 7645 P.S. 7700 P.S. 7715 P.S. 7730 P.S. 7745 P.S. 7800 P.S. 7815 P.S. 7830 P.S. 7845 P.S. 7900 P.S. 7915 P.S. 7930 P.S. 7945 P.S. 8000 P.S. 8015 P.S. 8030 P.S. 8045 P.S. 8100 P.S. 8115 P.S. 8130 P.S. 8145 P.S. 8200 P.S. 8215 P.S. 8230 P.S. 8245 P.S. 8300 P.S. 8315 P.S. 8330 P.S. 8345 P.S. 8400 P.S. 8415 P.S. 8430 P.S. 8445 P.S. 8500 P.S. 8515 P.S. 8530 P.S. 8545 P.S. 8600 P.S. 8615 P.S. 8630 P.S. 8645 P.S. 8700 P.S. 8715 P.S. 8730 P.S. 8745 P.S. 8800 P.S. 8815 P.S. 8830 P.S. 8845 P.S. 8900 P.S. 8915 P.S. 8930 P.S. 8945 P.S. 9000 P.S. 9015 P.S. 9030 P.S. 9045 P.S. 9100 P.S. 9115 P.S. 9130 P.S. 9145 P.S. 9200 P.S. 9215 P.S. 9230 P.S. 9245 P.S. 9300 P.S. 9315 P.S. 9330 P.S. 9345 P.S. 9400 P.S. 9415 P.S. 9430 P.S. 9445 P.S. 9500 P.S. 9515 P.S. 9530 P.S. 9545 P.S. 9600 P.S. 9615 P.S. 9630 P.S. 9645 P.S. 9700 P.S. 9715 P.S. 9730 P.S. 9745 P.S. 9800 P.S. 9815 P.S. 9830 P.S. 9845 P.S. 9900 P.S. 9915 P.S. 9930 P.S. 9945 P.S. 10000 P.S. 10015 P.S. 10030 P.S. 10045 P.S. 10100 P.S. 10115 P.S. 10130 P.S. 10145 P.S. 10200 P.S. 10215 P.S. 10230 P.S. 10245 P.S. 10300 P.S. 10315 P.S. 10330 P.S. 10345 P.S. 10400 P.S. 10415 P.S. 10430 P.S. 10445 P.S. 10500 P.S. 10515 P.S. 10530 P.S. 10545 P.S. 10600 P.S. 10615 P.S. 10630 P.S. 10645 P.S. 10700 P.S. 10715 P.S. 10730 P.S. 10745 P.S. 10800 P.S. 10815 P.S. 10830 P.S. 10845 P.S. 10900 P.S. 10915 P.S. 10930 P.S. 10945 P.S. 11000 P.S. 11015 P.S. 11030 P.S. 11045 P.S. 11100 P.S. 11115 P.S. 11130 P.S. 11145 P.S. 11200 P.S. 11215 P.S. 11230 P.S. 11245 P.S. 11300 P.S. 11315 P.S. 11330 P.S. 11345 P.S. 11400 P.S. 11415 P.S. 11430 P.S. 11445 P.S. 11500 P.S. 11515 P.S. 11530 P.S. 11545 P.S. 11600 P.S. 11615 P.S. 11630 P.S. 11645 P.S. 11700 P.S. 11715 P.S. 11730 P.S. 11745 P.S. 11800 P.S. 11815 P.S. 11830 P.S. 11845 P.S. 11900 P.S. 11915 P.S. 11930 P.S. 11945 P.S. 12000 P.S. 12015 P.S. 12030 P.S. 12045 P.S. 12100 P.S. 12115 P.S. 12130 P.S. 12145 P.S. 12200 P.S. 12215 P.S. 12230 P.S. 12245 P.S. 12300 P.S. 12315 P.S. 12330 P.S. 12345 P.S. 12400 P.S. 12415 P.S. 12430 P.S. 12445 P.S. 12500 P.S. 12515 P.S. 12530 P.S. 12545 P.S. 12600 P.S. 12615 P.S. 12630 P.S. 12645 P.S. 12700 P.S. 12715 P.S. 12730 P.S. 12745 P.S. 12800 P.S. 12815 P.S. 12830 P.S. 12845 P.S. 12900 P.S. 12915 P.S. 12930 P.S. 12945 P.S. 13000 P.S. 13015 P.S. 13030 P.S. 13045 P.S. 13100 P.S. 13115 P.S. 13130 P.S. 13145 P.S. 13200 P.S. 13215 P.S. 13230 P.S. 13245 P.S. 13300 P.S. 13315 P.S. 13330 P.S. 13345 P.S. 13400 P.S. 13415 P.S. 13430 P.S. 13445 P.S. 13500 P.S. 13515 P.S. 13530 P.S. 13545 P.S. 13600 P.S. 13615 P.S. 13630 P.S. 13645 P.S. 13700 P.S. 13715 P.S. 13730 P.S. 13745 P.S. 13800 P.S. 13815 P.S. 13830 P.S. 13845 P.S. 13900 P.S. 13915 P.S. 13930 P.S. 13945 P.S. 14000 P.S. 14015 P.S. 14030 P.S. 14045 P.S. 14100 P.S. 14115 P.S. 14130 P.S. 14145 P.S. 14200 P.S. 14215 P.S. 14230 P.S. 14245 P.S. 14300 P.S. 14315 P.S. 14330 P.S. 14345 P.S. 14400 P.S. 14415 P.S. 14430 P.S. 14445 P.S. 14500 P.S. 14515 P.S. 14530 P.S. 14545 P.S. 14600 P.S. 14615 P.S. 14630 P.S. 14645 P.S. 14700 P.S. 14715 P.S. 14730 P.S. 14745 P.S. 14800 P.S. 14815 P.S. 14830 P.S. 14845 P.S. 14900 P.S. 14915 P.S. 14930 P.S. 14945 P.S. 15000 P.S. 15015 P.S. 15030 P.S. 15045 P.S. 15100 P.S. 15115 P.S. 15130 P.S. 15145 P.S. 15200 P.S. 15215 P.S. 15230 P.S. 15245 P.S. 15300 P.S. 15315 P.S. 15330 P.S. 15345 P.S. 15400 P.S. 15415 P.S. 15430 P.S. 15445 P.S. 15500 P.S. 15515 P.S. 15530 P.S. 15545 P.S. 15600 P.S. 15615 P.S. 15630 P.S. 15645 P.S. 15700 P.S. 15715 P.S. 15730 P.S. 15745 P.S. 15800 P.S. 15815 P.S. 15830 P.S. 15845 P.S. 15900 P.S. 15915 P.S. 15930 P.S. 15945 P.S. 16000 P.S. 16015 P.S. 16030 P.S. 16045 P.S. 16100 P.S. 16115 P.S. 16130 P.S. 16145 P.S. 16200 P.S. 16215 P.S. 16230 P.S. 16245 P.S. 16300 P.S. 16315 P.S. 16330 P.S. 16345 P.S. 16400 P.S. 16415 P.S. 16430 P.S. 16445 P.S. 16500 P.S. 16515 P.S. 16530 P.S. 16545 P.S. 16600 P.S. 16615 P.S. 16630 P.S. 16645 P.S. 16700 P.S. 16715 P.S. 16730 P.S. 16745 P.S. 16800 P.S. 16815 P.S. 16830 P.S. 16845 P.S. 16900 P.S. 16915 P.S. 16930 P.S. 16945 P.S. 17000 P.S. 17015 P.S. 17030 P.S. 17045 P.S. 17100 P.S. 17115 P.S. 17130 P.S. 17145 P.S. 17200 P.S. 17215 P.S. 17230 P.S. 17245 P.S. 17300 P.S. 17315 P.S. 17330 P.S. 17345 P.S. 17400 P.S. 17415 P.S. 17430 P.S. 17445 P.S. 17500 P.S. 17515 P.S. 17530 P.S. 17545 P.S. 17600 P.S. 17615 P.S. 17630 P.S. 17645 P.S. 17700 P.S. 17715 P.S. 17730 P.S. 17745 P.S. 17800 P.S. 17815 P.S. 17830 P.S. 17845 P.S. 17900 P.S. 17915 P.S. 17930 P.S. 17945 P.S. 18000 P.S. 18015 P.S. 18030 P.S. 18045 P.S. 18100 P.S. 18115 P.S. 18130 P.S. 18145 P.S. 18200 P.S. 18215 P.S. 18230 P.S. 18245 P.S. 18300 P.S. 18315 P.S. 18330 P.S. 18345 P.S. 18400 P.S. 18415 P.S. 18430 P.S. 18445 P.S. 18500 P.S. 18515 P.S. 18530 P.S. 18545 P.S. 18600 P.S. 18615 P.S. 18630 P.S. 18645 P.S. 18700 P.S. 18715 P.S. 18730 P.S. 18745 P.S. 18800 P.S. 18815 P.S. 18830 P.S. 18845 P.S. 18900 P.S. 18915 P.S. 18930 P.S. 18945 P.S. 19000 P.S. 19015 P.S. 19030 P.S. 19045 P.S. 19100 P.S. 19115 P.S. 19130 P.S. 19145 P.S. 19200 P.S. 19215 P.S. 19230 P.S. 19245 P.S. 19300 P.S. 19315 P.S. 19330 P.S. 19345 P.S. 19400 P.S. 19415 P.S. 19430 P.S. 19445 P.S. 19500 P.S. 19515 P.S. 19530 P.S. 19545 P.S. 19600 P.S. 19615 P.S. 19630 P.S. 19645 P.S. 19700 P.S. 19715 P.S. 19730 P.S. 19745 P.S. 19800 P.S. 19815 P.S. 19830 P.S. 19845 P.S. 19900 P.S. 19915 P.S. 19930 P.S. 19945 P.S. 20000 P.S. 20015 P.S. 20030 P.S. 20045 P.S. 20100 P.S. 20115 P.S. 20130 P.S. 20145 P.S. 20200 P.S. 20215 P.S. 20230 P.S. 20245 P.S. 20300 P.S. 20315 P.S. 20330 P.S. 20345 P.S. 20400 P.S. 20415 P.S. 20430 P.S. 20445 P.S. 20500 P.S. 20515 P.S. 20530 P.S. 20545 P.S. 20600 P.S. 20615 P.S. 20630 P.S. 20645 P.S. 20700 P.S. 20715 P.S. 20730 P.S. 20745 P.S. 20800 P.S. 20815 P.S. 20830 P.S. 20845 P.S. 20900 P.S. 20915 P.S. 20930 P.S. 20945 P.S. 21000 P.S. 21015 P.S. 21030 P.S. 21045 P.S. 21100 P.S. 21115 P.S. 21130 P.S. 21145 P.S. 21200 P.S. 21215 P.S. 21230 P.S. 21245 P.S. 21300 P.S. 21315 P.S. 21330 P.S. 21345 P.S. 21400 P.S. 21415 P.S. 21430 P.S. 21445 P.S. 21500 P.S. 21515 P.S. 21530 P.S. 21545 P.S. 21600 P.S. 21615 P.S. 21630 P.S. 21645 P.S. 21700 P.S. 21715 P.S. 21730 P.S. 21745 P.S. 21800 P.S. 21815 P.S. 21830 P.S. 21845 P.S. 21900 P.S. 21915 P.S. 21930 P.S. 21945 P.S. 22000 P.S. 22015 P.S. 22030 P.S. 22045 P.S. 22100 P.S. 22115 P.S. 22130 P.S. 22145 P.S. 22200 P.S. 22215 P.S. 22230 P.S. 22245 P.S. 22300 P.S. 22315 P.S. 22330 P.S. 22345 P.S. 22400 P.S. 22415 P.S. 22430 P.S. 22445 P.S. 22500 P.S	

H.M.S. *Dundas*

thru
30 day of April

Time	Log (stating type)	Distance Run		Mean Revs. per Minute	True Course	Gyro Compass Course	Standard Compass Course	Deviation	Variation	Wind		Weather and Visibility	Sea and Swell	Corrected Barometric Pressure in Millibars	Temperature °F		
		Miles	Tenths							Direction (true)	Force (0-12)				Dry Bulb	Wet Bulb	Sea
0100														10 11 1/2	49	45	50
0200														10 11	50	46	50
0300														10 12	52	48	50
0400										E	1	B6	00	10 12	52	48	50
0500														10 10	51	48	50
0600														10 09	50	48	50
0700														10 09	50	47	50
0800										NE	1	B6	00	10 09	51	49	50
0900														10 09	53	50	50
1000														10 09	55	52	50
1100														10 09 1/2	55	50	50
1200										NE	1	B7	00	10 09	56	52	50

Number on Sick List	Distance run through the Water	Zone Time kept at noon	Leave Granted to Ship's Company	Anchor Bearings
			<i>Watchkeeper 1300 to 0700.</i> <i>Blue & white watches 1330 to 0710</i> <i>Chief P.O. 0700</i>	

1300														10 09 1/2	61	53	49
1400														10 09 1/2	62	55	49
1500														10 10	59	52	49
1600										S	1	B67	00	10 10	54	49	49
1700														10 10 1/2	52	47	49
1800														10 10 1/2	49	46	49
1900														10 11 1/2	48	45	49
2000										S	1	D6	00	10 12 1/2	48	45	49
2100														10 13	48	45	49
2200														10 14	48	44	49
2300														10 14	48	44	49
2400										SW	1	B66	00	10 14	48	44	49

19 42 From *Esq.* to , and at *Esq.*

REMARKS	Initials of the Officer of the Watch
<i>Hailed harbour patrol 0240</i>	
<i>Relief Closed up</i>	
<i>Hailed Harbour Patrol 0505</i>	
<i>Called hands 0630 0650 Cooks to the Galley</i>	
<i>Breakfast 0700. Vataud for sea 0840 Harrow alongside 850</i>	
<i>Relief Closed up</i>	
<i>O.O. 6.6 & O.O. 6.8 Left harbour 0805</i>	
<i>Colors 0900 stand easy 1015 out pipes 1030</i>	
<i>up spirits</i>	
<i>Afternoon watchmen to dinner 1130 Secure 1245</i>	
<i>hands to dinner 1300 (Relief Closed up)</i>	

Position	Latitude	Longitude	Depending on	Currents experienced
0800				
1200				
2000				

<i>clean lower deck 1300. make and mend. Duty watch fall in 1310</i>	
<i>Liberty men 1330 (2 ratings) Dawson birthed 1330.</i>	
<i>Stand easy 1420. Out pipes 1430. Liberty men 1430 (11 ratings).</i>	
<i>Stoker P.O. Dyer drafted off ship 1605. Relief closed up</i>	
<i>1630 Liberty men fall in 6 ratings (2) L. sto. drafted aboard 1700</i>	
<i>St. It. drafted aboard 1705. 1750 Liberty men fall in (5 ratings)</i>	
<i>1745 Cooks to the Galley. 1800 Hands to supper 1930 Liberty men fall in (2) ratings Rounds 2000 Relief closed up.</i>	
<i>Hailed harbour patrol 2215.</i>	
<i>Pipe down 2230.</i>	
<i>Relief closed up.</i>	

Time	Log (stating type)	Distance Run		Mean Revs. per Minute	True Course	Gyro Compass Course	Standard Compass Course	Deviation	Variation	Wind		Weather and Visibility	Sea and Swell	Corrected Barometric Pressure in Millibars	Temperature °F		
		Miles	Tenths							Direction (true)	Force (0-12)				Dry Bulb	Wet Bulb	Sea
0100				52.6						South	2	vis. 5 0.7.	sea 2 swell 4	1021	50	49	49
0200				52.4										1021	50	48	49
0300				54.1										1021	51	49	49
0400				42.										1020	50	48	49
0500				49.1										1020	49	47	49
0600		91	-	50.3	cor.	various		1W	26E	SE.	2	vis. 6 0.	sea 2 swell 4	1020	47	46	49
0700				121.4										1020	47	46	49
0800				127.6										1020	48	45	49
0900				117.0										1021	48	47	48
1000				87.5										1020	51	49	48
1100				92.3										1020 1/2	57	52	48
1200	Subord.			52.5				1W	26E					1020 1/2	54	50	48

REMARKS				Initials of the Officer of the Watch
<p>called hands 0645 Cooks to galley 0705 hands to breakfast 0715 2 hands fall in 0800 Reliefs close up 0800. Challenged U.S. Freighter 1035 N/S spirits afternoon watchmen to dinner 1130 1145 Cooks to galley 1155 Reliefs close up Hands to dinner</p>				

Number on Sick List	Distance run through the Water	Zone Time kept at noon	Leave Granted to Ship's Company	Anchor Bearings

Position	Latitude	Longitude	Depending on	Currents experienced
0800				
1200				
2000				tidal

1300											vis. 7 bc.			1020 1/2	54	50	48
1400														1021	55	51	48
1500														1021	55	50	48
1600														1021	56	51	48
1700														1021	54	50	48
1800										NW.	3.	vis. 7 bc.	sea 2 swell 3	1022	53	50	48
1900														1022	52	50	48
2000														1022 1/2	52	49	48
2100														1023	51	48	48
2200														1024	50	46	48
2300														1024	49	46	48
2400														1024	50	46	48

<p>1600 Hands to tea Typed stowes to be open from 1900 to 2100 hrs Duty watch fall in 1930. Darken ship 2100. Pipe down 2230. Relief closed up.</p>				<p>W.B.H.</p>
--	--	--	--	---------------

H.M.S. Dundas

4 day

of May

1942

From

to

, and at

Sea

Time	Log (stating type)	Distance Run		Mean Revs. per Minute	True Course	Gyro Compass Course	Standard Compass Course	Deviation	Variation	Wind		Weather and Visibility	Sea and Swell	Corrected Barometric Pressure in Millibars	Temperature °F		
		Miles	Tenths							Direction (true)	Force (0-12)				Dry Bulb	Wet Bulb	Sea
0100				53.5										102.5	50	49	48
0200				43.5										102.5	50	48	48
0300				54.7										102.5	50	48	48
0400				154.0	VL									102.5	49	47	48
0500				167.9	duty									102.6	49	46	48
0600				173.4	Egg I to Hope I ^s									102.6	50	46	48
0700				94.9										102.6	50	47	49
0800				45.0										102.6	49	46	49
0900				48.8										102.7	49	46	49
1000				52.6										102.8	52	49	49
1100				78.3										102.8	53	48	49
1200				106.5										102.8	53	49	49

Number on Sick List	Distance run through the Water	Zone Time kept at noon	Leave Granted to Ship's Company	Anchor Bearings
		Pacific Summer time	Nil	

1300														102.8	53	48	49
1400														102.8	56	50	49
1500														102.8 1/2	56	50	49
1600														102.8 1/2	56	49	49
1700														102.9	57	52	48
1800														102.9	56	50	48
1900														102.9 1/2	54	49	48
2000														102.9 1/2	51	45	48
2100														103.0	50	46	48
2200														103.0	50	45	48
2300														103.0	50	45	48
2400														103.0	50	44	48

REMARKS	Initials of the Officer of the Watch
Reliefs closed up 0400	
Reliefs closed up 0800 & Handfell in	
1015 Stand easy 1130 out pipes up spirits afternoon watchkeeper to dinner 1130 cooks to the galley 1150 Hands to dinner 1200 Relief close up.	NBA

Position	Latitude	Longitude	Depending on	Currents experienced
0800				
1200				
2000				Tidal

Hands fall in 1310.	
Stand Easy 1420. Out Pipes 1430.	
afternoon watchmen to tea 1530.	
Secure 1545 Reliefs close up.	
1625 Sub. Contact stations. 1635 - 4" Guns Crew Drill Alarm 1645	
1750 Cooks to the Galley 1800 Hands to supper Reliefs closed up.	NBA
1930 Clean up for Hands.	
2000 Reliefs closed up	
Pipes down 2330	
Reliefs closed up	NBA

H.M.S. Dundas

5 day of May

1942 From to , and at Sea

Time	Log (stating type)	Distance Run		Mean Revs. per Minute	True Course	Gyro Compass Course	Standard Compass Course	Deviation	Variation	Wind		Weather and Visibility	Sea and Swell	Corrected Barometric Pressure in Millibars	Temperature °F		
		Miles	Tenths							Direction (true)	Force (0-12)				Dry Bulb	Wet Bulb	Sea
0100				44.8						light		0. vis 7	swell 2	1031	50	44	48
0200				47.1	Patrol duty									1031 1/2	50	45	48
0300				35.4	B. Calvert to Egg I ^s									1031 1/2	50	47	48
0400				42.5										1031	51	47	48
0500				45.0										1031	50	47	48
0600				44.9						light		0. vis 6	swell 2	1030 1/2	49	46	48
0700				97.0										1030 1/2	49	47	48
0800				62.9										1030 1/2	50	47	48
0900				53.8										1030 1/2	52	47	49
1000				111.6										1030	53	48	49
1100				104.3										1030	55	48	49
1200				88.3						SW		0. vis 7	swell 2	1029 1/2	56	51	49

REMARKS

Called hands 0630

Cooks to the galley 0650 Hands to breakfast 0700

Hands fall in 0800 Relief close up.

Stand easy 1015 Out Pipe 1030

Away seaboard crew 1050 up spits afternoon watchman to dinner 1130

Secure Cook to galley 1150 Hands to dinner 1200 Relief close up

Number on Sick List	Distance run through the Water	Zone Time kept at noon	Leave Granted to Ship's Company	Anchor Bearings
/	/	Pacific Summer Time	Nil	/

Position	Latitude	Longitude	Depending on	Currents experienced
0800	/	/	/	/
1200	/	/	/	/
2000	/	/	/	Tidal

1300														1029 1/2	55	50	49
1400				81.6	B. Calvert to Egg I ^s									1029 1/2	58	54	49
1500				82.3										1029	57	54	49
1600				81.9										1028 1/2	58	55	49
1700				39.0										1028	64	55	49
1800				39.4						light		0. vis 7	swell 2	1027	64	49	49
1900				79.5										1026	64	48	49
2000				98.9										1026	63	47	49
2100				91.2										1026	51	47	49
2200				45.3										1025 1/2	50	48	49
2300				47.5										1025 1/2	50	47	49
2400				47.3										1025	50	46	49

out pipes 1255 hands fall in 1300

Stand easy 1420 out pipes 1430

first Dog watchmen to tea 1530

Secure 1545 1555 Reliefs Close up 1600 Tea

Cooks to the Galley 1750

Hands to Supper 1800

Clean up for rounds 1930

Relief Closed up.

Darken ship 2115

Pipe Down 2230

Relief close up.

Time	Log (stating type)	Distance Run		Mean Revs. per Minute	True Course	Gyro Compass Course	Standard Compass Course	Deviation	Variation	Wind		Weather and Visibility	Sea and Swell	Corrected Barometric Pressure in Millibars	Temperature °F		
		Miles	Tenths							Direction (true)	Force (0-12)				Dry Bulb	Wet Bulb	Sea
0100				46.8						Airs	1	C. vs. 6	swell 2	1024	50	46	49
0200				46.5										1024	50	45	49
0300				45.1										1024	49	44	49
0400				46.0										1023 1/2	48	44	49
0500				44.9										1023	48	45	49
0600				47.9						Airs	1	C. vs. 6	swell 2	1022	49	45	49
0700				48.3										1022	50	46	49
0800				48.1										1022	53	51	49
0900				50.4										1022	54	50	48
1000				102.5										1021	54	50	48
1100				128.1										1020	54	50	48
1200				127.1						Airs		C. vs. 6	swell 2	1019	54	50	48

REMARKS		Initials of the Officer of the Watch
0400 Reliefs closed up.		
piped hands 0630 Cooks to galley 0650		
hands to breakfast 0700		
out pipes 0755 hands fall in 0800 Reliefs closed up		
1015 Stand Easy 1030 Out pipes		
Up Spirits & Afternoon watchmen to Dinner (watch will change) at 1200		
Secure - Cooks to the Galley 1150; 1200 Hands to Dinner Reliefs closed up		

Number on Sick List	Distance run through the Water	Zone Time kept at noon	Leave Granted to Ship's Company	Anchor Bearings
		Pacific Summer time		

Position	Latitude	Longitude	Depending on	Currents experienced
0800				
1200				
2000				Tidal

1300										SW 2		C. vs. 6		1019	58	53	48
1400														1019	57	52	48
1500														1019	55	51	48
1600														1019	54	50	48
1700														1019	56	49	48
1800										SW 2		C. vs. 6		1019 1/2	53	50	48
1900														1019 1/2	54	51	48
2000														1019	51	49	49
2100														1019	52	48	50
2200														1019	50	48	50
2300														1019	50	49	50
2400														1019	49	48	50

Non-duty watches pipe down 1310.		
1338 Hands to submarine contact stations.		
1445 Secure. Afternoon watchmen to tea.		
Hands to tea 1600 Reliefs close up.		
1640 Clean up Decks for Captain's Rounds. Rounds 1700		
1750 Cooks to the Galley 1800 Hands to supper Reliefs close up		
1930 Clean up for Rounds 1955 Reliefs close up		
pipe down 2230		
Reliefs closed up 2400		

Time	Log (stating type)	Distance Run		Mean Revs. per Minute	True Course	Gyro Compass Course	Standard Compass Course	Deviation	Variation	Wind		Weather and Visibility	Sea and Swell	Corrected Barometric Pressure in Millibars	Temperature °F		
		Miles	Tenths							Direction (true)	Force (0-12)				Dry Bulb	Wet Bulb	Sea
0100				45.6	Patrol duty							0. vis. 6	sea 0 swell 1	1021	50	47	49
0200				43.9	Egg I - C. Palmer									1022	51	49	49
0300				43.1										1022	52	49	49
0400				40.9										1022	51	49	49
0500				40.8										1021	50	48	49
0600				44.3						light airs	1.	b. vis. 7	sea 0 swell 1	1021	49	46	49
0700				40.5										1021	49	46	49
0800				102.1										1021	51	48	49
0900				122.5										1021	52	49	48
1000				121.5										1020 1/2	52	49	48
1100				125.1										1021	55	50	48
1200				124.5										1021	62	54	48

Number on Sick List	Distance run through the Water	Zone Time kept at noon	Leave Granted to Ship's Company	Anchor Bearings
/	/	Pacific summer time	/	/

1300														1021	61	54	48
1400				65.7	Patrol duty									1017	62	54	48
1500				19.7	Milbanke Sound									1013	58	50	48
1600				96.6										1013	58	49	48
1700				50.5										1013	57	48	48
1800				51.						South 3.	0. vis. 6	sea 2. swell 3		1013	56	50	48
1900				69.2										1012	53	54	48
2000				89.1										1012	52	56	48
2100				127.9										1013	48	54	48
2200				109.										1013 1/2	50	46	48
2300				109.6										1013 1/2	50	46	48
2400				57.9										1014	51	46	48

189.8 mi

REMARKS	Initials of the Officer of the Watch
Called hands 0630.	KBH
cooks to the galley 0650 Hands to breakfast 0700.	
Reliefs close up 0755 Hands fall in 0800	
1015 Stand Easy 1030 Out Pipes	
1130 all spirits aft. watchmen to dinner	
1150 Secure Cooks to the Galley Reliefs Close Up Hands to Dinner	KBH

Position	Latitude	Longitude	Depending on	Currents experienced
0800				
1200				
2000				Tidal

away sea boat crew 1305 Make t mend	
Sea boat crew returned 1520	
hands to tea 1600 Relief closed up	
cooks to the galley 1750 Hands to supper 1800	KBH
1930 Clean up for Rain	
2000 Reliefs Closed up	
Darken shift 2115	
Pipe Down	
Reliefs close up 2355.	KBH

H.M.S. Dundas

8 day

of May

19 47 From

to

, and at Sea

Time	Log (stating type)	Distance Run		Mean Revs. per Minute	True Course	Gyro Compass Course	Standard Compass Course	Deviation	Variation	Wind		Weather and Visibility	Sea and Swell	Corrected Barometric Pressure in Millibars	Temperature of		
		Miles	Tenths							Direction (true)	Force (0-12)				Dry Bulb	Wet Bulb	Sea
0100				42.4						South	2	C. visib	swell 3	1014	52	47	48
0200				43.2	Patrol duty									1014	52	47	48
0300				40.2										1013 1/2	51	48	48
0400				39.2	Milbanke Sound									1013	51	49	48
0500				43.6										1013	51	49	48
0600				43.7						S.E.	2	0. visib	swell 2	1013	50	48	48
0700				46.7										1012	55	50	48
0800				54.0										1012	56	50	48
0900				125.0										1012	55	51	48
1000				116.3										1012	47	44	48
1100				84.1										1011	48	45	48
1200				89.6									Sea 0 swell 2	1011	48	44	48

Number on Sick List	Distance run through the Water	Zone Time kept at noon	Leave Granted to Ship's Company		Anchor Bearings	
		Pacific Summer time				

1300				84.5						SE.	2	0. visib	swell 3	1011	48	46	48
1400				90.1										1012	51	46	48
1500				89.6										1012	50	46	48
1600				91.9										1012 1/2	52	48	48
1700				108.6										1012	52	47	48
1800				90.8						South	2	0. visib	swell 2	1012	50	46	48
1900				82.6										1012	49	46	48
2000				115.1										1012	48	46	48
2100				85.2										1012	48	46	48
2200				66.2										1012	48	46	48
2300				35.6										1012	47	45	48
2400				47.6							light air 3 min	Sea 0 swell 2		1012	46	44	48

166.7 miles

REMARKS		Initials of the Officer of the Watch
	0400 Reliefs closed up.	
	Cooks to galley 0650	MBB
	hands to breakfast 0700 0755 Out Pipes	
	0800 Hands fall in	
	1015 Stand Easy 1030 Out Pipes	
	1130 Up spirits aft. watchmen to dinner 1150 secure Cooks to the Galley	MBB
	1200 Hands to dinner Reliefs closed up	

Position	Latitude	Longitude	Depending on	Currents experienced
0800				
1200				Tidal
2000				

1310	Pipe down Red & Blue watches, white watch fall in.	
1420	Stand Easy 1430 Out Pipes	
1530	First day. watchmen to tea 1545 secure.	
1555	Reliefs close up and hands to tea.	
1626	Hands to Sub. Contact Stations 1650 secure	
1750	Cooks to the Galley	MBB
	Reliefs closed up 1800	
	Clean up for Rounds 1930 1955 Reliefs close up	
	pipe down 2230	
	Reliefs closed up	MBB

Time	Log (stating type)	Distance Run		Mean Revs. per Minute	True Course	Gyro Compass Course	Standard Compass Course	Deviation	Variation	Wind		Weather and Visibility	Sea and Swell	Corrected Barometric Pressure in Millibars	Temperature °F		
		Miles	Tenths							Direction (true)	Force (0-12)				Dry Bulb	Wet Bulb	Sea
0100				47.8	145	-	S 61 E	-	26 E	NW	2	b. vis 7	sea 0 swell 2	1015	46	45	48
0200				44.5										1015	49	46	48
0300				47.2										1015 1/2	49	46	48
0400				48.7										1015 1/2	50	47	48
0500				45.9										1015 1/2	50	47	48
0600				109.0	145	-	S 61 E	-	26 E	NW	2	b. vis 6	sea 2 swell 2	1015 1/2	50	48	48
0700				98.1										1015 1/2	52	47	48
0800				98.1	118	-	S 87 E	1W	26 E					1015 1/2	54	49	48
0900				108.8										1015	53	49	50
1000				90.5										1015	50	46	50
1100				90.0										1015	52	48	50
1200	Walkers Electric 190			88.0										1016	52	48	50

Number on Sick List	Distance run through the Water	Zone Time kept at noon	Leave Granted to Ship's Company	Anchor Bearings
/	194	Pacific Summer Time	/	/

1300				87.1	118	-	S 87 E	1W	26 E					1015	52	49	49
1400				92.4										1015	53	49	49
1500				87.7										1015 1/2	53	49	49
1600				91.0										1015 1/2	53	50	49
1700				91.8										1016	54	51	49
1800				90.5	118	-	S 87 E	1W	26 E	NW	3			1016	54	52	49
1900				90.8										1015	53	50	49
2000				97.1										1015	52	48	49
2100				98.4										1015	52	48	49
2200				70.8										1015	51	46	49
2300				47.5	114	-	E							1015	51	45	49
2400	94			49.6										1018	50	45	49

1259 mi.

REMARKS	Initials of the Officer of the Watch
0400 Reliefs closed up	
0645 piped hands to galley 0705	AB
0715 hands to breakfast	
0800 hands fall in (Reliefs close up)	
0930 Hands to clean in #2 - Secusa	
1050 Hands to Divisions; Divine service	
1130 4p Spinks afternoon watchmen to Dinner 1150 Cooks to the Galley	
Hands to dinner 1200 Reliefs Closed up	

Position	Latitude	Longitude	Depending on	Currents experienced
0800				
1200				
2000				Tidal

1530				First Dog watchmen to tea
1555				Reliefs close up 1600 Hands to tea
1730				Last Dog Watchmen to supper 1750 Cooks to the Galley
1800				Hands to supper Reliefs close up
1930				Clean up decks
2000				Reliefs close up
2230				Pipe down
				Reliefs Closed up

H.M.S. Dundas

11 day of May

19 42 From to , and at Sea

Time	Log (stating type)	Distance Run		Mean Revs. per Minute	True Course	Gyro Compass Course	Standard Compass Course	Deviation	Variation	Wind		Weather and Visibility	Sea and Swell	Corrected Barometric Pressure in Millibars	Temperature °F		
		Miles	Tenths							Direction (true)	Force (0-12)				Dry Bulb	Wet Bulb	Sea
0100				48.4	114	-	E	-	24E	East	2-3	C. vis. 6	swell	1018	50	45	49
0200				50.6										1018 1/2	50	46	49
0300				42.1										1018 1/2	51	47	49
0400				47.9										1018	50	46	49
0500				44.8										1017 1/2	49	46	49
0600		132	-	132.9	105	-	N 81 E			East	2	C. vis. 6	swell	1017	48	46	49
0700				124.0										1017	48	46	49
0800				126.9										1017	50	47	49
0900														1017	54	48	49
1000														1016	53	50	49
1100														1016	54	50	49
1200		159								S	0	BCT 00		1015	56	51	49

REMARKS		Initials of the Officer of the Watch
Rounds correct w.g. :		
Rounds correct w.g. :		
Rounds correct w.g. :		
Rounds correct w.g. :		
Called hands 0630		UBA
Cooks to the galley 0650 Hands to breakfast 0700		
Relief close up 0755 Hands fall in 0800		
Hands to Stations for entering harbour 0910 Laid up along side		
Quend 0930 Request men to muster 0940, 1015 Stand easy 1030 Out Pipes		
1130 Up spints aft. watchmen to dinner		
1150 Secure Cooks to the galley 1200 Hands to dinner Relief closed up		UBA

Number on Sick List	Distance run through the Water	Zone Time kept at noon	Leave Granted to Ship's Company	Anchor Bearings
-	163.	Pacific Summer Time		

Position	Latitude	Longitude	Depending on	Currents experienced
0800				
1200				
2000				Tidal

1300														1015	56	51	49
1400														1015	55	50	49
1500														1015	52	50	49
1600														1015	53	50	49
1700														1014	56	50	49
1800														1014	56	50	49
1900														1014	55	49	49
2000														1014	55	50	49
2100														1014	53	50	49
2200														1014	54	50	49
2300														1015	52	51	49
2400														1016	52	51	49

Quend of left jetty at 1230 Laid up to jetty		
hands to stations for changing berth 1305 Laid up by		
Guernsey hulk 1325 1420 Stand easy 1430 Out pipes		
1600 Hands to tea 1630 Liberty men		
1730 Liberty men 1750 Cooks to galley		
1800 Supper		
2000 Rounds All correct		CID
2045 ?? Holown Sunset		

58.4

H.M.S. Dundas

14 day

of May

1942

From Esquimaux to

, and at Esquimaux

Time	Log (stating type)	Distance Run		Mean Revs. per Minute	True Course	Gyro Compass Course	Standard Compass Course	Deviation	Variation	Wind		Weather and Visibility	Sea and Swell	Corrected Barometric Pressure in Millibars	Temperature °F		
		Miles	Tenths							Direction (true)	Force (0-12)				Dry Bulb	Wet Bulb	Sea
0100														1020 1/2	54	50	50
0200														1020	54	49	50
0300														1020	52	49	50
0400										NE	NE	B6	00	1019	50	49	50
0500														1019	52	51	50
0600														1019	53	52	50
0700														1019	54	52	50
0800										N	0	B6	00	1019	54	53	50
0900														1018 1/2	57	54	50
1000														1018 1/2	56	52	50
1100														1018	62	57	50
1200										N	0	B6	00	1018	62	54	50

Number on Sick List	Distance run through the Water	Zone Time kept at noon	Leave Granted to Ship's Company		Anchor Bearings
			Watchkeeper 1300-1600	Non Duty Hold - 1630-0730	
			Chs. Par 1600-0800		

1300														1018	63	58	50
1400														1017	63	57	50
1500														1017	63	57	50
1600										E	1	B7	00	1017	63	58	50
1700														1017 1/2	62	57	50
1800														1018	62	56	50
1900														1018	61	56	50
2000										E	1	B7	00	1018 1/2	60	55	50
2100														1019	59	54	50
2200														1019	57	53	50
2300														1019	56	52	50
2400										NE	1	B6	00	1018	54	50	50

REMARKS					Initials of the Officer of the Watch
<p>0340 Hailed Harbour Patrol</p> <p>0400 Relief closed up.</p> <p>0440 Hailed harbour patrol</p> <p>0630 piped hands to galley 0640 hands to breakfast 0700</p> <p>0755 Out Pipes 0800 Hands fall in.</p> <p>0900 Colours.</p> <p>1015 Stand Easy 1030 Out Pipes.</p> <p>1130 Up spits aft. watchmen to dinner</p> <p>1145 Secure Cooks to the Galley 1200 Hands to dinner Relief closed up</p>					

Position	Latitude	Longitude	Depending on	Currents experienced
0800				
1200				
2000				

1300	Liberty men fall in 1300				
1400	Hands fall in 1310				
1500	1420 Stand Easy 1430 Out Pipes				
1600	1545 Secure hands to tea.				
1700	1600 Liberty men fall in				
1800	1730 Liberty men fall in				
1900	1800 Hands to supper.				
2000	1830 Liberty men fall in				
2100	Sunset 2046.				
2200	Harbour ^{patrol} tied up alongside 2050 Harbour patrol left 22.15				
2300	Pipe down 22.30				
2400	Harbour patrol tied up alongside 22.40				

H.M.S. *Dundas*

15 day of *May*

1942 From *Esquimaux* to , and at *Esquimaux*

Time	Log (stating type)	Distance Run		Mean Revs. per Minute	True Course	Gyro Compass Course	Standard Compass Course	Deviation	Variation	Wind		Weather and Visibility	Sea and Swell	Corrected Barometric Pressure in Millibars	Temperature of $^{\circ}$ F		
		Miles	Tenths							Direction (true)	Force (0-12)				Dry Bulb	Wet Bulb	Sea
0100														10.17	54	50	50
0200														10.17	55	50	50
0300														10.17	55	51	50
0400										N	1	B6	00	10.16	55	50	50
0500														10.16	56	50	50
0600														10.16	57	52	50
0700														10.16 $\frac{1}{2}$	58	53	50
0800										NE	1	B7	00	10.16 $\frac{1}{2}$	58	55	50 $\frac{1}{2}$
0900														10.17	64	58	50 $\frac{1}{2}$
1000														10.17	68	63	51
1100														10.18	66	58	51
1200										NE	1	B7	00	10.18	64	56	51

Number on Sick List	Distance run through the Water	Zone Time kept at noon	Leave Granted to Ship's Company	Anchor Bearings

1300														10.18	66	58	51
1400														10.18	65	67	50
1500														10.18	64	56	50
1600										SE	1	B6	00	10.18	65	55	50
1700														10.18	63	53	50
1800														10.18	62	52	50
1900														10.18	60	52	50
2000										E	1	B6	00	10.18	60	55	50
2100														10.18	61	54	50
2200														10.18	56	54	49
2300														10.18	56	53	49
2400										E	1	B6	00	10.18	54	50	49

REMARKS	Initials of the Officer of the Watch
0200 Relief closed up.	
0340 Harbour Patrol left.	
0420 Harbour patrol tied up alongside, patrol left 0430	
0500 Harbour patrol tied up alongside	
0600 Relief closed up	
0630 - Hailed Hands.	
0700 - Hands to Breakfast & galley	
0800 - Hands fall in - Columns 0900	
10.15 - Stand easy 10.30 Out pipes	
11.30 - Up spirits, afternoon watchmen to dinner	
1150 Secure Coops to the Galley 1700 Hands to dinner Relief closed up	

Position	Latitude	Longitude	Depending on	Currents experienced
0800				
1200				
2000				

1300 Watchkeeper Liberty men fall in 1310 Hands fall in	
1430 Stand Easy 1430 Out Pipes first Dog watchmen to tea 1530	
Secure 1545	
Liberty men fall in 1630 13 men	
Liberty men fall in 1730 & Coops to galley back to supper	
Liberty men fall in 1830	
Clear up decks for rounds 1930	
Rounds 2000 Reliefs Closed up	
2045 Sunset.	
2230 Pipe Down	
Hailed Harbor Patrol 2255	
Relief Closed up: 2400	

H.M.S.

Dundas

16 day

of *May*

Time	Log (stating type)	Distance Run		Mean Revs. per Minute	True Course	Gyro Compass Course	Standard Compass Course	Deviation	Variation	Wind		Weather and Visibility	Sea and Swell	Corrected Barometric Pressure in Millibars	Temperature of		
		Miles	Tenths							Direction (true)	Force (0-12)				Dry Bulb	Wet Bulb	Sea
0100														1018	57	52	49
0200														1018	53	50	49
0300														1018	54	50	49
0400										E	1	B6	00	1018	52	50	49
0500														1019	52	50	49
0600														1019	54	51	49
0700														1019	55	50	49
0800										E	2	B7	00	1019	55	50	49
0900														1020	59	55	49
1000														1020	59	56	49
1100														1020	59	56	49
1200										E	1	B7	00	1020	60	56	49

Number on Sick List	Distance run through the Water	Zone Time kept at noon	Leave Granted to Ship's Company		Anchor Bearings
			Red & White Watches	Watchkeepers	
			Red & White Watches 1230-0730	Watchkeepers - 1230-0730	
			chs end P.O. 1230-0730		

1300														1021	62	56	50
1400														1021	64	56	50
1500														1021	66	58	50
1600										NE	1	B7	00	1021	68	60	50
1700														1020	68	59	50
1800														1020	66	58	50
1900														1019 1/2	66	58	50
2000										S	1	B7	00	1019 1/2	64	57	50
2100														1020	63	57	50
2200														1020	60	56	50
2300														1020	57	53	50
2400										SE	1	B7	00	1020	54	52	50

19 42

From *Esquimalt* to

, and at *Esquimalt*

REMARKS	Initials of the Officer of the Watch
Hailed harbour patrol 0215	
harbour patrol secured alongside 0245	
Reliefs closed up	
Harbour Patrol alongside 0450	
Called Hands 0630; 0650 Cooks to the Galley; 0700 Breakfast	
Reliefs closed up hand full in 0800	
Left Esquimalt Jetty 0900 tied up to oil jetty 0945	
(No smoking on upper deck while oiling ship)	
Stand easy 1015 out pipes 1030 1100 tied up at berth & beside	
Courtesy guys spilt afternoon watches to dinner 1130	
Secure 1150 Cooks to galley hand to dinner 1200 Reliefs closed up	

Position	Latitude	Longitude	Depending on	Currents experienced
0800				
1200				
2000				

1230 Liberty men fall in (4 ratings) 1300 Liberty men fall in (2 ratings)
1330 Liberty men fall in (9 ratings)
1500 Courtesy left berth
1600 Relief closed up
1630 Liberty men fall in (2 ratings)
1730 Liberty men fall in (2 ratings) 1750 Cooks to the galley 1800 Hand to supper
2 V.A. Phases drifted off boat 1810 Liberty Men 1830 (4 ratings)
Liberty Men fall in 1930 (3 ratings) Duty watch fall in Rounds 2000 Relief closed up
2048 Sunset
2230 Pipe Down Hailed Harbour Patrol 2240
2400 Relief closed up

H.M.S. Dundas 20 day of May

Time	Log (stating type)	Distance Run		Mean Revs. per Minute	True Course	Compass Course	Standard Compass Course	Deviation	Variation	Wind		Weather and Visibility	Sea and Swell	Corrected Barometric Pressure in Millibars	Temperature of F		
		Miles	Tenths							Direction (true)	Force (0-12)				Dry Bulb	Wet Bulb	Sea
0100	L			49.4													
0200				45.3										1026 1/2	55	53	49
0300				52.9	Patrol duty					airs	1	c. vis 7	0				
0400				54.4										1026 1/2	53	51	49
0500				50.6	Egg Is												
0600				50.3						airs	1	c. vis 7	0	1026	53	57	49
0700				50.8													
0800				50.8	Hope Is.									1026	55	52	49
0900				51.0						SE	1	c. vis 7	0				
1000				51.4										1026	56	53	49
1100				44.7													
1200				102.5						SE	1	c. vis 7	0	1026 1/2	60	56	49

Number on Sick List	Distance run through the Water	Zone Time kept at noon	Leave Granted to Ship's Company	Anchor Bearings
/	/	Pacific Summer Time	/	/

1300																	
1400														1025	59	57	50
1500				29.5	Patrol duty					airs	1	c. vis 7	0				
1600				104.9										1024 1/2	58	55	50
1700				50.7													
1800				43.6	Patrol duty					Airs	1	c. vis 7	0	1023	56	53	50
1900				50.9													
2000				48.9										1023	52	51	49
2100				49.0						NW	1	c. vis 6	2	1020 1/2	52	51	49
2200				77.9													
2300				53.2						Airs	1	c. vis 6	2	1022	52	51	49
2400				46.7						Airs	1	c. vis 6	2	1020	52	51	49

124.6

19 42 From Patrol duty Egg Is to Hope Is., and at

REMARKS	Initials of the Officer of the Watch
0200 Egg Is. 090 x 3 M.	
0400 Pine Is. 120 x 10 M.	
0600 Cape Caution 030 x 9 M. 0725 Cape Caution 112 x 4 M.	HBH
0906 Pine Is. 159 x 4 M.	
1000 Egg Is. 003 x 9 M.	
1120 Solander Is. 237 x 22 M.	

Position	Latitude	Longitude	Depending on	Currents experienced
0800	51-10 N	127-51 W	Bearings	
1200	51-03 N	127-53 W	"	
2000	51-08 N	127-50 W	"	Tidal

CAPTAIN (D)
HALIFAX
DEC 17 1943

1400 Pine Isld. 112 x 6 M. error .27 E.	
1500 Increase speed to 12.5 Revs. 1555 Revs. Red. to 5.0. 1600 Exercise action stations	
1600 Pine Is. 100 x 4 M. 1630 Exercise action stations completed	
1745 Increased speed to 12.5 Revs. 1755 Reduce speed to 5.0 Revs.	
1800 Storm Isld. 006 x 2 M.	HBH
1900 Egg Is. Lt. 351 x 13 M. 1930 Signal books mustered.	
2000 Lat 51° 08' N Long 127° 50' W.	
2100 Egg Is. Lt. N 24° @ (T) 2.8 M. Increased to 12.5 Revs. 2135 Decreased to 5.0 Revs. Darken Ship Light 2135	
2207 Cape Caution 120° x 4 M.	
2304 Pine Is. Lt. 149° x 8 M.	
2400 Pine Is. Lt. 140° x 6 M.	msc

Time	Log (stating type)	Distance Run		Mean Revs. per Minute	True Course	Gyro Compass Course	Standard Compass Course	Deviation	Variation	Wind		Weather and Visibility	Sea and Swell	Corrected Barometric Pressure in Millibars	Temperature °F		
		Miles	Tenths							Direction (true)	Force (0-12)				Dry Bulb	Wet Bulb	Sea
0100				46.8	Patrol duty												
0200				49.4	Egg Is					N	2	r. 5	2	10.19	52	51	49
0300				54.0													
0400				51.6	Hape Is					N	1	0.6	2	10.17	53	51	49
0500				49.4	"												
0600				108.8	Patrol duty					NW	1	0.6	1	10.16 1/2	54	53	49
0700				54.9													
0800				55.6	Egg Is					N	1	0.5	9	10.16	56	54	49
0900				128.8													
1000				129.7	Cape Calvert					N	1	0.6	3	10.16	58	56	49
1100				96.1													
1200				88.5	"					NNE	1	0.6	0	10.15	60	58	49

Number on Sick List	Distance run through the Water	Zone Time kept at noon	Leave Granted to Ship's Company		Anchor Bearings	
/	/	Pacific Summer Time	/	/	/	/

1300				130.9	Patrol duty												
1400				115.7	Cape Calvert	airs	-	0.6	1.	10.14	61	58	49				
1500				94.5													
1600				94.1	Hape Is	airs	-	0.6	1.	10.15	62	59	50				
1700				130.9													
1800				111.8	"					S	1.	c. 6	1.	10.13	61	59	50
1900				78.3	"												
2000				64.6	"					airs	-	0.6	1.	10.13	59	56	50
2100				48.2	"												
2200				51.5	"					airs	-	0.6	9	10.14	57	54	50
2300				50.0	Egg Is. to												
2400				49.2	C. Calvert	airs	-	0.6	1.	10.15	55	53	50				

173.5

REMARKS	Initials of the Officer of the Watch
0100 Pine Is. 160 x 8 M.	
0200 Egg Is. 050 x 4 M.	
0300 Egg Is. 090 x 1 1/2 M.	
0400 Cape Caution 080 x 3 M.	
0500 Cape Caution 060 x 5 M. 0510 Relieved by HMCS "Timmins" & proceeded to relieve HMCS "Caraguet" on patrol Egg Is. to Cape Calvert.	125 Revs M.B.H.
0550 Egg Is. 090 x 1 1/2 M. Relieved HMCS "Caraguet" revs to 50. 0630 Hands called.	
0650 Cooks to the Gally. 0700 Clark Pt. 357 x 4.5 M. Hands to Breakfast. 0800 Hands fall in.	
0823 - Increased to 140. 1835 decreased to 130. 0837 decreased to 50.	
0840 - " " To 145. 0912 Clark Pt. 349 x 2 M; 1000 Hand Pt. 357 x 2 M.	
1015 Hand Eng. 1020 Out Pipe. - 1052 reduced to 50 revs.	
1100 - False Egg Is. - 149 x 6 M. 5 Timmins N. found off Kila Hd. for Bella Bella.	
1130 - 44.5 p.m. - off Hape Is. to Timmins. Assumed patrol Cape Calvert to Hape Is. increased to 100 revs.	M.L.

Position	Latitude	Longitude	Depending on	Currents experienced
0800	51° 18' N	127° 57' W	Bearings	
1200	51° 15' N	127° 53' W	"	
2000	51° 18' N	127° 50' W	"	Tidal

Egg Is. 100 x 3 M.	
1225 Half sp. 125 revs. 1245 160 revs.	
1330 Red revs to 100.	
1445 Egg Is. 095 x 2 M.	
1600 C. Caution 160 x 4 M. 1610 Revs to 125. (1620 Exercises. Sub-contact, A.B. stations, Collision Stations, 1645 Exercises completed.) 1647 Hand 140 revs 1655 Hand 155 revs.	
1700 Egg Is. 110 x 3 M. 1732 Hand 50 revs. 1750 Hand 175 revs.	M.B.H.
1820 - Increased speed - 100 revs. 1830 - reduced to 80 revs; 1850 - increased to half speed 100 revs.	
1913 Reduced to slow speed - 50 revs; 1915 Clark Pt. 326 x 2 M.	
2057 Egg Is. Lt. 175 x 4 M. 2106 - signal books mustered.	
2300 Egg Is. Lt. 127° - Steering 007° 2334 Relieved by Timmins off False Egg Is. and received signal to resume normal patrol. (Egg Is. to C. Calvert.	
2400 Clark Pt. 002 x 5 M.	M.L.

Time	Log (stating type)	Distance Run		Mean Revs. per Minute	True Course	steer Gyro Compass Course	Standard Compass Course	Deviation	Variation	Wind		Weather and Visibility	Sea and Swell	Corrected Barometric Pressure in Millibars	Temperature of			
		Miles	Tenths							Direction (true)	Force (0-12)				Dry Bulb	Wet Bulb	Sea	
0100				49.0														
0200				53.1	Patrol duty					SW	2	vm. 4	0	1015	54	53	50	
0300				78.8								0.5	0					
0400				46.9	Egg Is					SW	1	0.6	0	1015	55	53	50	
0500				51.7														
0600				53.9	to					SSW	3	ofe. 4	1	1016	53	52	49	
0700				44.1														
0800				54.4	Cape Calvert					SSW	4	0.56	2	1017.5	52	50	49	
0900				75.7														
1000				102.4						SSW	1	0.856	0	1019	55	52	50	
1100				124.5														
1200				123.4						W	1	bc. 856	2	1018	64	58	49	

Number on Sick List	Distance run through the Water	Zone Time kept at noon	Leave Granted to Ship's Company		Anchor Bearings	
/	/	Pacific Summer Time	/	/	/	/

1300				69.8															
1400				48.2	Patrol duty					W	2	ad. 5	1	1019	57	54			
1500				53.0															
1600				45.5	Egg Is					WSW	2	0.6	0.1	1019	58	55	49		
1700				45.5	to														
1800				54.4	Cape Calvert					WSW	3	0.6	2.2	1019.5	54	52			
1900				47.7															
2000				49.0						SW	2	0.5	0.1	1019	53	51	49		
2100				151.5															
2200				53.0															
2300				62.0															
2400				49.4						NW	1	0.5	0.1	1020			49		

150.7

REMARKS		Initials of the Officer of the Watch
0100	C. Calvert 340 X 2 M. poor visibility, wet fog, revs 50.	
0200	C. Calvert 270 X 1 M. 0250 fog lifted "	
0400	Clarke Pt. 260 X 1 M.	
0500	poor visibility wet fog.	
0600	Clarke P. 270 X 1 M. fog cleared	
0700	Shabon Is. 025 X 8 M.	NBH
0800	Egg Is. Lt. 167 X 4.5 M.	
0937	False Egg Is. 076 X 3 M. Half speed 125 revs.	
1050	Egg Is. 182 X 3.5 M. 1122 Egg Is. 092 3 ml s/c N 16 W (C) 1122 20 F	

Position	Latitude	Longitude	Depending on	Currents experienced
0800	51° 19' N	127° 51' W	Bearings	
1200	51° 23' N	127° 53' W	"	
2000	51° 22' N	127° 52' W	D.R.	Tidal

1217	Clarke Pt. 315 X 1 M. red revs to 50.	
1400	False Egg Is. 094 X 1 1/2 M. visibility poor 3/4 N 35 W (C)	
1500	Clarke Pt. 319 X 1 1/2 M. visibility clear.	
1600	Clarke Pt. 322 X 1/2 M.	
1700	Egg Is. 105 X 2.	
1800	Anna Is. 060 X 2 1/2 M. revs. 50.	NBH
1900	False Egg Is. - 084 X 2 M. 2003 - increased to 1/2 speed - 125 revs. - 2012 increased to full speed. 2056 - Reduced to half speed - 125 revs. 2106 Egg Is. Lt. 022 X 2.5 M.	
2135	Ship darkened. 2212 - Reduced to slow speed - 50 revs. 2235 Egg Is. Lt. - 085 X 2 M.	
2305	Signal books mustered.	
2400	Clarke Pt. 009 X 6.5 M.	msc.

H.M.S. "Dundas" 24 day of MAY

Time	Log (stating type)	Distance Run		Mean Revs. per Minute	True Course	steer Cryo Compass Course	Standard Compass Course	Deviation	Variation	Wind		Weather and Visibility	Sea and Swell	Corrected Barometric Pressure in Millibars	Temperature °F			
		Miles	Tenths							Direction (true)	Force (0-12)				Dry Bulb	Wet Bulb	Sea	
0100	Electric			44.7	184	156	S 23 E	-	27 E									
0200	87			52.7														
0300				50.8														
0400	94.5	74	5	50.6						S.	2.	0.6	2.4	1016				49
0500				51.3														
0600				53.5	345	322	N 42 W											
0700				53.4														
0800	114	20	5	53.1	345	322	N 42 W		27 E	NW	1	bc 7	0.4	1013	54	50	49	
0900				52.9														
1000	124	10	-	52.9	077	046	N 50 E		27 E									
1100	30	6	0	54.0														
1200	34	4	0	53.0	027	002	N		27 E	airs		d. 6	0.1	1012	59	56	49	

Number on Sick List	Distance run through the Water	Zone Time kept at noon	Leave Granted to Ship's Company	Anchor Bearings
/	/	Pacific Summer Time	/	/

1300	38	4	0	48.1	027	002	N	-	27 E									
1400	43	5	0	51.8	096	066	N 69 E	-	"									
1500	48	5	0	52.2	279	250	S 72 E	-	"									
1600	54	6	0	57.6	"	"	"	"	"	NW	2.	b. 7	0.3	1010	64	54	50	
1700	58.5	4	5	51.5	"	"	"	"	"									
1800	62.5	4	0	46.3	"	"	"	"	"									
1900	68	5	5	50.7	042	015	N 15 E	-	"									
2000	72.2	4	2	55.2	205	178	S 3 W	-	"	NW	1	bc 7	0.0	1006	59	55	49	
2100	77.3	5	1	55.3	"	"	"	-	"									
2200	82.5	5	2	51.0	"	"	"	-	"									
2300	87.8	5	3	56.6	"	"	"	-	"									
2400	90.5	2	7	40.8	227	195	S 20 W	-	"	SW	1	0.6	0.2	1006 1/2			49	

117.5

1942 From Milbanke to Ed Patrol, and at

REMARKS					Initials of the Officer of the Watch
0100	Mid't McInnes Islt. 318° x 2 1/2 M. % S 23 E (C)				
0200	D.R. Lat. 52° 04' N Long. 128° 41' W Δ 87				
0400	D.R. Lat 51° 57' N Long. 128° 42' W Δ 94 1/2 YL rolling heavily.				
0448	D.R. Lat 51° 54' N Long. 128° 42' W Δ 98. % N 42 W (C)				
0540	South end Goose Is. 101° x 11 M. Δ 2 rolling heavily				MBH
0700	Cape Mark 049° x 6 M Δ 9 rolling heavily.				
0815	McInnis Is. 033° x 9 M Δ 15 " "				
0907	A/C N 50 E (C) McInnis Is. 055° x 6 1/2 M Δ 19.2				
1010	Cape Mark, 121° x 10 M. Δ 24.3				
1100	Cape Swaine 095° x 6 M Δ 29.7. 1140 Luzon Oh N 7 E (75) 1.2 ml. fog 32.				
1200	Susan Rk 317° x 1 1/2 M. A/C North (C) Δ 34				MBH

Position	Latitude	Longitude	Depending on	Currents experienced
0800	52° 5' N	128° 51' W	Bearings	
1200	52° 17' N	128° 28' W	"	
2000	52° 28' N	128° 26' W	"	Tidal

1227	Robb Pt. Lt. H. Is. 144° x 2 1/2 M. Δ 36. % S 37 E (C)			
1307	Robb Pt. Lt. H. Is. 057° x 1 1/2 M Δ 39. % N 69 E (C). 1410 Hyndman reefs B" 070° x 2 1/2 M Δ 44			
1430	Idol Pt. 042° x 1 1/2 M. % S 72 W (C) error 27 E. Δ 45 1/2. 1530 Robb Pt. 008° x 3/2 M Δ 51.			
1600	Susan Rk 337° x 1 1/4 M. Δ 54 1/2 (Dist. made good = 19.5 mls. Log dist = 20.5 mls. Av. speed 5K. Good courses made good. Log 2 1/2 % fast) NOON to 1600.			
1700	Aldrich Pt. 008° x 3 M. % North (C) Δ 58 1/2			
1800	Susan Rk. 137° x 4 1/2 M Δ 62 1/2			MBH
1805	A/C N 15° E (C) 1900 - Ruth Pt 082° x 1 1/2 M. Δ 67.9			
2000	Jorkina Pt. 228° x 2 mi. A/C S 3° W (C) Δ 72.2; 2050 Signal books mustered.			
2140	Ship darkened.			
2248	McInnis Is. Lt. 297° Δ 86.6			
2318	McInnis Is. Lt. 340° x 3 1/2 M. Reduced to 40 revs. A/C S 20° W (C) Δ 88.5			
2400	Δ 90 1/2			MBH

H.M.S. *Dundas* 25 day of *MAY*

Time	Log (stating type)	Distance Run		Mean Revs. per Minute	True Course	Steering Gyro Compass Course	Standard Compass Course	Deviation	Variation	Wind		Weather and Visibility	Sea and Swell	Corrected Barometric Pressure in Millibars	Temperature °F		
		Miles	Tenths							Direction (true)	Force (0-12)				Dry Bulb	Wet Bulb	Sea
0100	94.2	3	7	41.9	227	195	S 20 W	-	27 E								
0200	98	3	8	45.0	"	"	"	"	"								
0300	100.5	2	5	34.2	"	"	"	"	"								
0400	102.5	2	0	39.7	"	"	"	"	"	SE	6	bc. 7	3:4	1007	-	-	50
0500	104.5	2	0	40.6	"	"	"	"	"	"							
0600	105.5	1	0	41.3	"	"	"	"	"	"							
0700	110.7	5	2	48.7	047	019	N 20 E	"	"	"							
0800	113.2	2	5	38.2	049	019	N 20 E	"	"	"	5	bc. 7	3:4	1007.5	54	52	50
0900	122.6	9	4	84.6	092	065	N 64 E										
1000	131.2	8	6	119.0	"	"	"	"	"								
1100	142	10	8	108.3	194	167	S 8 E	"	"								
1200	149.5	7	5	87.0	194	167	S 8 E	-	"	air	0	bc. 6	1.2	1008	56	54	50

Number on Sick List	Distance run through the Water	Zone Time kept at noon	Leave Granted to Ship's Company		Anchor Bearings	
13	1024 130x4 M. TO NOON.	Pacific Summer Time				

1300	158	8	5	84	194	167	S 8 E	-	27 E								
1400	166.5	18	5	87.9	"	"	"	"	"								
1500	175	8	5	90.7	"	"	"	"	"								
1600	183.5	8	5	93.2	194	167	S 8 E	"	"	S	1-2	bc. 7	0:2	1008.5	60	56	50
1700	193	9	5	95	"	"	"	"	"								
1800	100.5	7	5	84.5	"	"	"	"	"								
1900	109	8	5	87.5	"	"	"	"	"								
2000	116.4	7	4	87.6	133	107	S 73 E	-	26 E	ENE	1	bc. 7	0.2	1015	64	58	50
2100	125.4	9		91.0	"	"	"	"	"								
2200	132.5	7	1	78.7	"	"	"	"	"								
2300	135.7	3	2	43.5	"	"	"	"	"								
2400	139.5	3	8	44	"	"	"	"	"	air	-	bc. 7	0.2	1011	-	-	50

160.7

1942 From *Milbanke* to *Sd Patrol*, and at

REMARKS														Initials of the Officer of the Watch
0030. M. Innes I ^s Lt. 020 X 6 1/2 M Δ 92.5. 7 hrs 40.														
0200 DR. Lat 52° 6' N Long 128° 53' W Δ 98.														
0400 DR. Lat 52-2 1/2 N Long 128-59 W Δ 102 1/2														
0600 DR. Lat 52-0 1/2 N Long 129-2 W Δ 105 1/2 9/c. N 20 E (C)														NB
0700 DR. Lat 52-5' N Long 128-55' W Δ 110.7 - rolling heavily														
0800 Lat 52-6' N Long 129-59' W Δ 113.3; 0826 in sound to 125 m. 0924 A/C (U/CHEC)														
0900 Cape Mark 086° X 11 M. Δ 122.6, 0930 A/C S 25 E (C) Δ 127.2														
1000 Limit Is. 053 X 6 M Δ 131.2 1020 A/C 190° Δ 34.6; 1024 West Rk. 500 E 4-3 M Δ 36. A/C S 8 E (C) Reduced to 90 m. Released by trimmer 1100 51° 52' N, 128° 40' W DR Δ 142														

Position	Latitude	Longitude	Depending on	Currents experienced
0800	52° 6' N	129° 59' W	Bearings	
1200	51° 48' N	127° 41' W	D.R.	
2000	50° 42' N	129° 3' W	Bearings	Tidal

1400	DR. Lat 51° 30' N Long 128° 52' W Δ 66.5	
1620	Triangle Island 182° X 14 1/2 M Δ 26 1/2	
1755	Triangle Is. 123° X 5.8 M Δ 99 1/2	NB
1850	Triangle Is. 070° X 6.5 M Δ 106.5 A/C 573° E (C).	
1905	Triangle Is. abeam 042° X 5.5 M Δ 109.5	
2100	E. Haycock Is. - 021° X 10 M Δ 125.4; 2140 darken ship; 2145 slow speed - 4.5 m	
2200	DR 128° 45' W - 50° 32' N Δ 132.5 W 2216 signal light mustered.	
2300	DR. 50° 30' N - 128° 41' W.	
2400	DR. 50° 27' N - 128° 36' W. Δ 39.5	NB

H.M.S. *Dundas* 26 day of MAY

Time	Log (stating type)	Distance Run		Mean Revs. per Minute	True Course	Cryo Compass Course	Standard Compass Course	Deviation	Variation	Wind		Weather and Visibility	Sea and Swell	Corrected Barometric Pressure in Millibars	Temperature °F		
		Miles	Tenths							Direction (true)	Force (0-12)				Dry Bulb	Wet Bulb	Sea
0100	43.	3	5	45.1	133	107	873E	1E	25E								
0200	46.5	3	5	41.1													
0300	50.0	3	5	40.4													
0400	53.5	3	5	45.3						SXE	2	c. 7	1.2	1012		49	
0500	56.5	3	0	48.2													
0600	65.	8	5	87.1													
0700	73	8		87.													
0800	82.7	9	7	87.8	134	108	872E		"	SXE	1	bc. 7	1.2	1013	55	52	50
0900	89.7	7	0	98.6													
1000	98.1	8	4	80.3													
1100	106.6	8	5	90.8													
1200	115.4	8	8	90.8						SE	1	bc. 7	1.2	1015	56	52	50

Number on Sick List	Distance run through the Water	Zone Time kept at noon	Leave Granted to Ship's Company	Anchor Bearings
/	Δ dist 166. 172.	Pacific Summer Time	/	/

1300	18	8	0	86.4	134	108	872E	1E	25E								
1400	16	8	0	87.6	"	"	"	"	"								
1500	25	9	0	86.0	124	098	880E	-	24E								
1600	33	8	0	83.5	"	"	"	-	"	SE	3	c. 7	2.2	1016	58	54	52
1700	42	9	0	93.9	"	"	"	-	"								
1800	53	11	0	124.8	"	"	"	-	"								
1900	64.9	11	9	126.0	"	"	"	-	"								
2000	76.0	11	1	125.5	"	"	"	-	"	SE	4	c. 7	2.2	1016	56	52	51
2100	89.7	13	7	126.0	"	"	"	-	"								
2200	97.	17	3	98.3		083	887E	1E	24E								
2300	101.6	3	4	47.9													
2400	105.1	3	5	46.4	144	120	860E			SE	4	c. 7	2.2	1015			51

186.8

1942 From *B. Cook* to *Pachean Pt*, and at

REMARKS	Initials of the Officer of the Watch
0200 DR Lat 50° 22' N Long 128° 30' W. Δ 46 1/2	
Vh. Relling heavily.	
0400 DR. Lat 50° 15' N Long 128° 20' W. Δ 53 1/2	
0500 Half speed 90 revs. Δ 56 1/2	
0600 Solander Is. 108 x 6 M. Δ 65.	HBA
0640 Solander Is. Lt. 044° x 2 1/2 M. Δ 70.3; 0700 Club Pt. 075° x 5.2 M.	
0800 Quoubin Is. 039° x 11.5 M. Δ 82.7; 0811 AC 572° E (C).	
1055 Rugged Pt. 006° x 17 M. Δ 05.9	
1145 Fume Pt. 031° x 11.5 M. Δ 113.4	
1200 Δ 115 1/2. Δ Set to zero. (log 3 1/2% slow in 24 hrs)	JML

Position	Latitude	Longitude	Depending on	Currents experienced
0800	49° 57' N	127° 40' W	Bearings	
1200	49° 33' N	127° 06' W	"	
2000	48° 50' N	125° 31' W	"	Tidal

1330 Estaban Pt. Lt. Hse. 101 x 12 M. Δ 28.	
1400 Estaban Pt. Lt. Hse. 084 x 9 M. Δ 16.	
1450 Estaban Pt. Lt. Hse. 043 x 6 1/2 M. Δ 23 1/2. 1/2 c. 880 E (C). error 24 E.	
1600 Estaban Pt. Lt. Hse. 347 x 10 M. Δ 33. 1620 Exercise sub-contact stations	
1645 Exercise completed; 1700 Kennard Is. 099° x 14 M. Δ 42. revs to 125.	
1800 Kennard Is. 041 x 5 1/2 M. Δ 53.	HBA
2000 Cape Beale 103 x 12.5 M. Δ 76; 2130 Darker ship; 2140 signal books mustered.	
2143 Pachina Pt Lt. North (N) 4 1/2 ml long 95 1/2. 1/2 c. N 82 E (C) slow speed, revs 50 per min	
2321 Swift sure Lt. 210° x 4 1/2 M. Δ 102.9	
2352 Pachina Lt. 301° x 11 M. Δ 104 1/2	
2400 Δ 105.	JML

H.M.S. *Dundas* 27 day of MAY

Time	Log (stating type)	Distance Run		Mean Revs. per Minute	True Course	Steer Compass Course	Standard Compass Course	Deviation	Variation	Wind		Weather and Visibility	Sea and Swell	Corrected Barometric Pressure in Millibars	Temperature °F				
		Miles	Tenths							Direction (true)	Force (0-12)				Dry Bulb	Wet Bulb	Sea		
0100	109.5	4	5	54.3	112	085	N87E	1E	24E										
0200	114.5	5	0	56.6	"	"	"	"	"										
0300	119.5	5	0	54.9	"	"	"	"	"										
0400	124.5	5	0	45.7	"	"	"	"	"	SE	2	O.Y. 60.	1.	1015	-	-	51		
0500	127.5	3	0	48.9	"	"	"	"	"										
0600	139.0	11	5	136.0	"	"	"	"	"										
0700	151.5	12	5	131.2															
0800	162.4	10	9	125.0						N	2	0.6	0.1.	1013.5	53	51	51		
0900																			
1000																			
1100																			
1200										N	1.	0.7	0.	1012.5	58	53	50		

Number on Sick List	Distance run through the Water	Zone Time kept at noon	Leave Granted to Ship's Company		Anchor Bearings	
/	170.	Pacific Summer time				

1300																			
1400																			
1500																			
1600										N	1.	bc 8.	0.0	1013	64	57	50		
1700																			
1800																			
1900																			
2000										N	1.	bc 7.	0.0	1012.5	57	55	50		
2100																			
2200																			
2300																			
2400										N	1.	bc 7.	0.0	1013	56	59	52		

61.8

1942 From *B. Flattery* to *Esquimalt*, and at

REMARKS															Initials of the Officer of the Watch
0100. Tatalash Pt. 1188 x 10 M. Δ 9 1/2 % N87E (C)															
0200 " " " 212 x 9 M. Δ 14 1/2. 0240 Waada Is. Flt. 202 x 7 M. Δ 18.															
0400 Slip Pt. 152 x 12 M. Δ 24 1/2.															
0500 Slip Pt. 159 x 10 M. Δ 27 1/2. Half sp. 125. (Log & ml. slow in 17 hrs dist 128)															
0533 Slip Pt. 184 x 9 M. Revs to 160. 0611 - revs to 125															
0632 Slip Pt. 021° x 3 1/2 M. Δ 46.4. 0645 Slip Pt. 329° x 5 M. Δ 10.8															
A/C N72° E (C). 0715 Slip Pt. 054° x 5 M. A/C N82° E (C)															
0800 - Log Housed Δ 162.4 0805 - Cuddlip Pt.															
0850 - Scroogs Rks. 5 Trd. Beam. 0854 - Passed thru Boom & fence.															
0904 - Made fast at Refuelling Jetty - Finished with Engines															
1022 - Left Refuelling Jetty.															
1040 - Made fast #4 Berth															

Position	Latitude	Longitude	Depending on	Currents experienced
0800	N48.19N	123.32W	Bearings	
1200	Berth # 4			
2000				Tidal

CAPTAIN (D)
HALF X
DEC 17 1943

1600	1630	1730	1830	Liberty Men
1930	Duty Watch - Red - Fallen In			
2000	Rounds			
2103	Sunset			
2230	Pipe Down			

Time	Log (stating type)	Distance Run		Mean Revs. per Minute	True Course	Gyro Compass Course	Standard Compass Course	Deviation	Variation	Wind		Weather and Visibility	Sea and Swell	Corrected Barometric Pressure in Millibars	Temperature °F			
		Miles	Tenths							Direction (true)	Force (0-12)				Dry Bulb	Wet Bulb	Sea	
0100																		
0200																		
0300																		
0400										N	1	B:8	-	1013	63	57	50	
0500																		
0600																		
0700																		
0800										airs	-	B:8	0:0	1013 1/2	64	57	50	
0900																		
1000																		
1100																		
1200										W	1	B:8	0:0	1013	64	58	50	

REMARKS					Initials of the Officer of the Watch

Number on Sick List	Distance run through the Water	Zone Time kept at noon	Leave Granted to Ship's Company	Anchor Bearings
				<i>Berth # 4</i>

Position	Latitude	Longitude	Depending on	Currents experienced
0800				
1200				
2000				

1300																		
1400																		
1500																		
1600										W	1	B:8	0:0	1014	61	56	50	
1700																		
1800																		
1900																		
2000										W	1	B:8	0:0	1020	60	55	50	
2100																		
2200																		
2300																		
2400										airs	-	B:7	0:0	1017	60	54	50	

1800 Hands to supper
 1930 Duty watch falling
 2000 Rounds
 2103 Colours
 2200 Challenged
 2315 Challenged

H.M.S. Dundas

29 day

of May

1942

From *Wh. Dockyard* to *Esteban Pt.*, and at

Time	Log (stating type)	Distance Run		Mean Revs. per Minute	True Course	Gyro Compass Course	Standard Compass Course	Deviation	Variation	Wind		Weather and Visibility	Sea and Swell	Corrected Barometric Pressure in Millibars	Temperature °F		
		Miles	Tenths							Direction (true)	Force (0-12)				Dry Bulb	Wet Bulb	Sea
0100																	
0200																	
0300																	
0400																	
0500																	
0600																	
0700																	
0800	Captain's Orders.																
0900	"			125.0													
1000	"			122.5	290	266	S86W		24E								
1100	"			121.0	"	"	"	"	"								
1200	"			107.0	"	"	"	"	"	4t wly air 1	B.C. 1	fine swell wly 4		1024	67	60	50

Number on Sick List	Distance run through the Water	Zone Time kept at noon	Leave Granted to Ship's Company		Anchor Bearings	
			Stp.	Y.	3L	50 m
	46	P.S.T.				

1300				120.6	290	266	S86W		24E								
1400				123.8	299	276	N84W		24E								
1500				124.5	"	"	"	"	"								
1600				123.7	305	283	N79W		"	WSW 2	B.C. 8	24		1024	60	56	57
1700				125.1	305	283	N79W		"								
1800				93.0													
1900				92.7													
2000				83.0	305	283	N79W		"	WSW 2	B.C. 8	4		1024	55	53	50
2100				91.9													
2200	1.0			68.0	270	243	S65W		25E								
2300	4.0	3		39.5					"								
2400	7.0	3		43.9	270	243	S65W		25E	light air	B.C. 8	2		1024			54

1578

REMARKS	Initials of the Officer of the Watch
0600 D.G. - "M. F. Q." Coils tuned over & tested with Brit Compass	
0800 - left H4 berth. 0810 - Cloud from Defence's Speed 125 Revs/S/C 155	
0850 Revs Passage. 0912. Sheringham Lt N63W (C) 7ml. 9/10 S86W (C) 24E	
1012 Sheringham Lt abn 021 dist 1ml.	
1146 Engines stopped. Lost Vacuum. 1156 Half speed.	

Position	Latitude	Longitude	Depending on	Currents experienced
0800	Berth 4			
1200	48° 29' S	124° 24' W	Cross Bearings	
2000	49° 06' S	126° 04' W	Bearings	Tidal

1335 Commanah Lt abn 020 - 3ml. Lt N84W (C) 24E	
1506 Pedernales Lt abn 039 - 2.4ml. Lt N79W (C) 24E. 1540 C. Peak Lt abn 035 - 2.8ml.	
1700 Amphitrite Pt. 035 x 2.1M - S/C 285 - Reduced to 90 Revs.	
1800 Lennard I. 319 x 11.5M	
1850 Lennard Island 337 x 5.3M	
1925 Lennard Island 036 x 3M. 2000 Moser Pt. 049 x 5M	
2056 Bartlett Island 057 x 5M. 2132 Slow speed runs 45 per min	
2140 Return Lt N39W (T) 12ml. 9/10 S65W (C) 24E. Streamed log @ 0.	
2400 D.R. 49° 13' N. 126° 31' W	

1578

H.M.S. DUNDAS

30th day

of May

19 42

From Esteban Pt. to

, and at

Time	Log (stating type)	Distance Run		Mean Revs. per Minute	True Course	Steer. Gyro Compass Course	Standard Compass Course	Deviation	Variation	Wind		Weather and Visibility	Sea and Swell	Corrected Barometric Pressure in Millibars	Temperature °F			
		Miles	Tenths							Direction (true)	Force (0-12)				Dry Bulb	Wet Bulb	Sea	
0100	11.0	4	-	46.2	D.G. 270	COILS 243	ON. 565W	-	25E									
0200	15.1	3	1	47.1	"	"	"	"	"									
0300	19.8	4	7	47.0	"	"	"	"	"									
0400	23.8	4	0	46.9	270	243	565W	-	25E	WNW	0-1	00.5	0-1	1024	-	-	51	
0500	27.4	3	6	44.6														
0600	30.0	2	6	45.4														
0700	35.0	5	-	45.2														
0800	38.5	3	5	44.6	270	243	565W	-	25E	Airs	-	0-6	0-2	1024.5	54	52	51	
0900	41.0	2	5	44.3	335	312	N50W	-										
1000	45.5	4	5	47.2	"	"	"	"	"									
1100	49.5	4	0	51.2	"	"	"	"	"									
1200	53.5	4	0	55.5						Airs		0-7	0-2	1025	56	52	54	

Number on Sick List	Distance run through the Water	Zone Time kept at noon	Leave Granted to Ship's Company		Anchor-Bearings	
/	94	P.S.T.			By J. 24 h. 00 m	By J. 12 h. 30 m
					By J. 140	

1300	58.0	4	5	45.9	335	312	N50W	-	25E										
1400	62.5	4	5	49.7	"	"	"	"	"										
1500	67.0	4	5	50.6	"	"	"	"	"										
1600	71.0	4	0	52.1	"	"	"	"	"			00.5/0.2		1025	56	54	53		
1700	75.0	4	0	64.0	"	"	"	"	"										
1800	81.0	5	0	62.4	"	"	"	"	"										
1900	87.0	6	0	62.5	"	"	"	"	"										
2000	94.0	7	0	64.4	"	"	"	"	"	Airs		00.7	0.2	1025	54	52	54		
2100	100.0	6	0	64.6	"	"	"	"	"										
2200	105.0	5	0	64.5	N21W	315	N46W	-	25E										
2300	110.0	5	0	56.6	"	"	"	"	"										
2400	117.0	7	0	65.2	"	"	"	"	"	Airs		00.5/0.2		1025	-	-	53		

120?

REMARKS		Initials of the Officer of the Watch
0100	Esteban Pt. DR 20° x 10 M Δ 11.0 Revs 45	
0330	Esteban Pt. 030° x 17 M	
0400	D.R. 49° 13.5' N : 126° 54' W. Δ 23.8	
0900	DR 49° 13' N. 127° 15' W. Δ 41.9/c. N50W. ERROR 25° E. Increased speed to 50 Revs	
1200	DR	W.B.M.

Position	Latitude	Longitude	Depending on	Currents experienced
0800	49° 13' N	127° 22' W	D.R.	Tidal
1200	49° 25' N	127° 33' W	D.R.	
2000	49° 58' N	127° 57' W	D.R.	

1630	Watch corrected 1630 the course to C.D.'s position to investigate suspicious patch on water. (true 49° 42' N Long 127° 46' W)			
1638	patch on water. 1638. Increased speed to 45 Revs. Continued station			
2100	Solander Island 035 x 7 M			
2140	Solander 91 ft. abm N65 E (T) 7 mi. log 103.3 9/c N46 E (C)			
2200	Reduced speed to 60 Revs. Solander Island light is not burning.			

W.B.M.

H.M.S.

Dundas

Sunday 31st of May

Time	Log (stating type)	Distance Run		Mean Revs. per Minute	True Course	Star Gyro Compass Course	Standard Compass Course	Deviation	Variation	Wind		Weather and Visibility	Sea and Swell	Corrected Barometric Pressure in Millibars	Temperature °F			
		Miles	Tenths							Direction (true)	Force (0-12)				Dry Bulb	Wet Bulb	Sea	
0100	123.0	6	-	57.9	339	315	N46W		25E									
0200	124.0	6	-	57.0														
0300	135.0	6	-	65.8														
0400	140.5	5	5	69.0						000	1	00.6	12	1024				
0500	144.0	6	5	75.7	VAR	VAR	VAR											
0600	158.5	11	5	126.6	056	024	N30E		26E									
0700	171.0	12	5	125.0														
0800	180.0	9	0	106.0	Capt's Orders						007	0:1	1024	54	52	54		
0900		5	8	58.4	Patrol duty													
1000		5	9	59.1	Hope Island to Egg Island													
1100		5	9	59.6														
1200		6	2	62.2						SW	1	00.8	0:1	1024	60	55	54	

Number on Sick List	Distance run through the Water	Zone Time kept at noon	Leave Granted to Ship's Company		Anchor Bearings	
✓	131	PST			Sty. 4. 24h 00m	Sty. 7. 2h 3h 50m
					271 0.2m	

1300		5	3	52.5	VAR	VAR	VAR											
1400		6	1	61.3														
1500		5	4	53.6														
1600		6	7	67.0						000	1	00.7	12	1024	58	54	50	
1700		6	0	60.5														
1800		6	8	67.7														
1900		9	3	92.7														
2000		11	9	118.9						000	1	00.7	0:2	1024	56	51	50	
2100		9	5	95.4	186	165	S20E			00		1:2						
2200		5	9	59.3														
2300		5	7	56.8														
2400		6	1	60.5						000	1	00.6	1:2	1024	-	-	52	

167.4

1942

From West Coast Patrol to

, and at

REMARKS										Initials of the Officer of the Watch
0144 Reins in abn 069° - 9 1/2 mls Δ 23 1/2										
0447 1/2 Rev. Increased speed to 125 revs.										
0520 Rounded Cape Sable - 1 3/4 mls Δ 51 1/2 N 30 E (C)										
0630 Cape Sable 121 x 6 M										
0735: Relieved H.M.C.B. Ingonish										
0750 Reduced speed to 60 Revs. 0810 Hauled log @ 181.										
0830 H.M.C.B. Ingonish proceeded off station to St. George in Safety Cove for engine repairs. Took over with South + South End patrol.										

Position	Latitude	Longitude	Depending on	Currents experienced
0800	51° 10'	127° 57'	DR	
1200	51° 02'	127° 47'	Beaufort	
2000	51° 28'	127° 52'	"	Tidal



1330	Reins in abn dist. 6 cables.	
1640	Egg to abn dist. 1.2 mls	
1735	Half Speed. Investigating strange craft. 1745 Reduced to 60 revs.	
1825	False Egg Island 152 x 4 M	
1857	Increased speed to 140 Revs.	
1950	Decreased to 60 Revs. 1955 Engines Stopped.	
2000	Increased to 140 Revs. 2030 Decreased speed to 60 Revs.	
2215	Egg Island light 132° x 2 1/2 M	
2230	Egg Island light 099 x 2 M	

167.4

H.M.S. Dundas

Monday 1st of June

Time	Log (stating type)	Distance Run		Mean Revs. per Minute	True Course	STEER Gyro Compass Course	Standard Compass Course	Deviation	Variation	Wind		Weather and Visibility	Sea and Swell	Corrected Barometric Pressure in Millibars	Temperature °F		
		Miles	Tenths							Direction (true)	Force (0-12)				Dry Bulb	Wet Bulb	Sea
0100		6	-	60.0	D.G. VAR	CO115 VAR	ON. VAR										
0200		6	2	61.5	"	"	"										
0300		7	8	78.0	"	"	"										
0400		9	1	90.7	"	"	"			Airs	1	22.6	12	1024	"	"	52
0500		5	3	52.6	"	"	"										
0600		6	1	61.2	"	"	"										
0700		5	9	59.3	"	"	"										
0800		5	9	59.2	"	"	"			Airs	1	00.7	0.2	1024	54	52	54
0900		11	9	118.7	"	"	"										
1000		12	3	122.8	"	"	"										
1100		9	1	91.1	"	"	"										
1200		9	6	96.1	57.2 W	22.3	54.5 W	-	27° E	Airs	1	00.2	1	1023	58	53	48

Number on Sick List	Distance run through the Water	Zone Time kept at noon	Leave Granted to Ship's Company		Anchor Bearings	
143		P.S.T.			Hy. 24h 00m	
					Hy. 3d 3h 50m	
					Y. Dist 414	

1300		7	4	73.7	VAR	VAR	VAR										
1400		6	8	67.9	"	"	"										
1500		6	9	69.3	"	"	"										
1600		10	4	104.2	"	"	"			Wly	2	BC 7	2.2	1023.5	60	55	49
1700		8	1	80.7	"	"	"										
1800		7	5	75.4	"	"	"										
1900		7	2	72.0	"	"	"										
2000		7	9	78.8	"	"	"			Wly	2	BC 7	1.2	1023	58	53	52
2100		7	5	74.5	"	"	"										
2200		6	3	62.3	187	160	322E	-	26								
2300		4	-	39.5	"	"	"										
2400		4	2	42.0	"	"	"			Wly	1	BC 6	1:2	1023	-	-	52

169.4

1942

From West Coast to

, and at

REMARKS	Initials of the Officer of the Watch
0135 Pine Is abn - 7 mls	
0245 Half Speed. Encountering 1/2 brown gorges	
0330 Reduced to 60 revs. Pine Is abn - 3 mls.	
Watch Correct	
0800: False Egg Island 117 X 2 1/2 M. 0809 Half speed ^{12.5 revs.} W.P.D. Inquisitor broken watch. and patrol	
0850 Egg Is. East (7) 3/4 mls. 1010 Various speeds	
1125 Half speed 12.5 revs	

Position	Latitude	Longitude	Depending on	Currents experienced
0800	51° 21' N	127° 52' W	Bearings	
1200	50° 58' N	127° 44' W	X Bearings	
2000	51° 02' N	127° 46' W	X Bearings	Tidal

1215 Pine Is NE (7) 1/2 mls. Slow revs 7.5 per min sp. N 45 W (e)	
1517 Egg Is abn - 1 1/2 mls. 1525 Half speed 12.5 revs. 1635 Encountered cotton station	
1610 Reduced to 75 revs. 1639 Half speed 12.5 revs. 1643 Reduced to 75 revs.	
Watch Correct	
2000 Storm Island 0.96 X 1 1/2 M	
2138 Reduced speed to 50 revs.	
2200 Reduced speed to 40 revs.	
Watch Correct	

Handwritten initials

H.M.S.

Dundas

Tuesday 2nd of June

1942

From West Coast to

, and at

Time	Log (stating type)	Distance Run		Mean Revs. per Minute	True Course	Star Gyro Compass Course	Standard Compass Course	Deviation	Variation	Wind		Weather and Visibility	Sea and Swell	Corrected Barometric Pressure in Millibars	Temperature °F		
		Miles	Tenths							Direction (true)	Force (0-12)				Dry Bulb	Wet Bulb	Sea
0100		4	4	43.8	VAR	VAR	VAR							1023	-	-	50
0200		3	8	38.1	"	"	"										
0300		4	-	39.8	"	"	"										
0400		4	-	39.7	"	"	"			NW	2	C 7	22	1023			50
0500		4	2	41.7	"	"	"										
0600		4	-	40.0	"	"	"										
0700		4	2	42.4	"	"	"										
0800		4	3	43.2	"	"	"			W	1	B.C. 7	1:2	1023	54	51	52
0900		4	4	44.4	"	"	"										
1000		11	1	110.5	"	"	"										
1100		8	8	88.5	"	"	"										
1200		5	4	54.0	"	"	"			W by	2	B.C. 7	22	1023	59	53	53

Number on Sick List	Distance run through the Water	Zone Time kept at noon	Leave Granted to Ship's Company	Anchor Bearings
	132	P.S.T.		Hy. 1 24 h 00 m Hy. 3 21 36 50 m H. 200 546

1300		4	8	48.4	VAR	VAR	VAR										
1400		5	3	53.3	"	"	"										
1500		9	7	89.6	"	"	"										
1600		10	9	109.3	"	"	"			NW	3	B.C. 7	22	1023.5	59	54	52
1700		5	9	59.6	"	"	"										
1800		5	7	56.6	"	"	"										
1900		6	3	62.8	"	"	"										
2000		6	-	60.3	"	"	"			NW	3	B.C. 7	2.2	1024	58	55	52
2100		5	9	59.2	"	"	"										
2200		6	1	60.5	"	"	"										
2300		7	9	79.3	"	"	"										
2400		3	6	36.0	"	"	"			NW	2	B.C. 6	1:2	1026	-	-	52

REMARKS	Initials of the Officer of the Watch
0050 Run to about 4 1/2 miles off.	
0625: Relieved by HMCS Vancouver.	
0630: Relieved HMCS Ingonish	
0800: Fake Egg Island 0.80 x 3 M. 0920: Faked Vancouver	
1045: Half speed 125 revs.	
1100 Clark Pt Pt West (T) 4 miles. 1119: Slow speed 60 revs.	

Position	Latitude	Longitude	Depending on	Currents experienced
0800	51° 19' N	127° 23' W	Class Bearings	
1200	51° 23' N	127° 19' W	"	
2000	51° 21 1/2' N	127° 51' W	"	Tidal

1210: Slow 60 revs.	
1410: Egg Is. about - 1 1/2 miles. 1440: Half speed 150 revs. Correcting for Prince Rupert	
1445: 160 revs. 1530: Clark Pt. about - look resumed to slow speed 60 revs.	
1720: Egg Is. about - 1 mile off.	
1930: Clark Pt. 3.01 x 2 M.	
2000: Fake Egg Island 1.35 x 3 M.	
2055: Egg Island 1.21 x 1 1/2 M.	
2155: Increased speed to 125 Revs.	
2230: Reduced speed to 40 Revs.	
Watch Correct	

H.M.S.

Dundas

Wednesday

day

3rd

of

June

1942

From West Coast to Patrol

, and at

Time	Log (stating type)	Distance Run		Mean Revs. per Minute	True Course	Gyro Compass Course	Standard Compass Course	Deviation	Variation	Wind		Weather and Visibility	Sea and Swell	Corrected Barometric Pressure in Millibars	Temperature °F			
		Miles	Tenths							Direction (true)	Force (0-12)				Dry Bulb	Wet Bulb	Sea	
					D.G. OILS ON.													
0100		4	2	42.2	VAR	VAR	VAR											
0200		4	2	41.6	"	"	"											
0300		4	1	41.3	"	"	"											
0400		3	9	39.2	"	"	"			W by	2	C 7	2.2	1025.5			52	
0500		4	-	39.7	"	"	"											
0600		4	4	44.4	"	"	"											
0700		3	9	38.5	"	"	"			W by	2	6.8	2:2					
0800		4	-	40.1	"	"	"			W by	2	6.8	2:2	1026	54	52	52	
0900		4	3	43.1	"	"	"											
1000		2	9	29.0	"	"	"											
1100		9	3	92.5	"	"	"											
1200		12	5	124.9	N 2 E	335°	N 25 W	-	27 E	WNW	3/4	0.	1/3	1027	57	53	52	

Number on Sick List	Distance run through the Water	Zone Time kept at noon	Leave Granted to Ship's Company		Anchor Bearings	
	125	P.S.T.			Sty. 4 24 h 00 m	
					Sty. 4 5 d 3 h 50 m	
					Dist 671 mls.	

1300		5	1	51.1	VAR	VAR	VAR											
1400		6	-	60.1	"	"	"											
1500		6	3	62.8	"	"	"											
1600		6	1	60.9	"	"	"			WNW	3/4	B.C. 9	31	1027.5	56	52	52	
1700		4	7	46.6	"	"	"											
1800		5	5	54.5	"	"	"											
1900		7	2	71.5	"	"	"											
2000		6	1	61.4	"	"	"			WNW	3	B.C. 8	2:2	1028	54	50	50	
2100		5	4	53.5	"	"	"											
2200		8	-	60.3	"	"	"											
2300		4	5	45.1	"	"	"											
2400		3	7	37.1	"	"	"			WNW	2	B.C. 6	2:1	1029	-	-	52	

128-3

REMARKS	Initials of the Officer of the Watch
0220 Clark Pt. abn - 1 ml. 7/2	
0515 Egg Is abn - 2 1/2 ml. 7/2	
Watch Correct	J.H.H.
0800: Sorrow Island 325° x 3 M	
1000: Ship Lewis + rifle practice.	
1035 Clark Pt. West (T) 1 ml. Slow 60 revs (104) Half 160 revs.	
1117 Egg Is East (T) 2 ml. 1130 Half revs 125. 1143 Slow 60 revs	
1150 Egg Is N 65 E (T) 3 1/2 ml. Sp. N 25 W (C) error 27° E	J.H.H.

Position	Latitude	Longitude	Depending on	Currents experienced
0800	51° 22' N	127° 51' W	CRASH Bearings	
1200	51° 14' N	127° 54 1/2'	"	
2000	51° 21' N	127° 51' W	"	Tidal

1455 Clark Pt. abn - 1 1/2 ml.	
1630: Excursion abandon ship stations lowered average sea boat.	
Engine & helm to ship's orders. 1710 Slow speed 60 revs.	
Watch Correct	J.H.H.
1845: Increased speed to 95 Revs. 1910 Reduced speed to 60 Revs.	
2000 Leco Rock 055° x 7 1/2 M	
1008 Egg Is N 66 E (T) 2.6 ml. Sp. N 22 W (C) error 27 E. Reduced speed to 40 revs.	
Watch Correct	J.H.H.

Time	Log (stating type)	Distance Run		Mean Revs. per Minute	True Course	Star Compass Course	Standard Compass Course	Deviation	Variation	Wind		Weather and Visibility	Sea and Swell	Corrected Barometric Pressure in Millibars	Temperature °F		
		Miles	Tenths							Direction (true)	Force (0-12)				Dry Bulb	Wet Bulb	Sea
0100		3	9	38.5	D.G. COILS ON VAR VAR VAR												
0200		3	8	38.4													
0300		4	-	40.0													
0400		4	1	40.6						WNW	1	B 7	11	1028			52
0500		4	5	44.5													
0600		3	9	39.0													
0700		3	9	39.3													
0800		4	-	40.4						W		B 7	1.1	1027	53	50	50
0900		6	-	60.3	N 2 E 335 562 W 219 Var Var 518 E 140	N 25 W 535 W Various 345 E											
1000		5	6	55.5	Var. Var	Various											
1100		12	2	121.6	N 43 W 292	N 70 W											
1200		16	3	162.9	N 33 W 280	N 82 W	- 27 E	H. dly air	0-1	B. C. V. E	Sea 1 swell W 1/4			1027	17	58	52

Number on Sick List	Distance run through the Water	Zone Time kept at noon	Leave Granted to Ship's Company		Anchor Bearings	
	125	P. S. T.			Stn. Y. 24 h. 00 m	
					Stn. Y. 6 h. 3 h. 50 m	
					Stn. Y. 810 mls.	

1300		15	-	149.8	N 33 W 302	N 60 W	26 E										
1400		14	8	148.3													
1500		12	5	126.8										1025.5			50
1600		4	4	43.6						SSW 1/2	2	B C 8	12	1026.5	61	55	50
1700		3	8	27.8													
1800		3	6	36.0													
1900		5	1	50.4	VAR VAR VAR												
2000		14	9	148.5	VAR VAR VAR					SSW	1	B C 8	1.2	1025	58	54	53
2100		8	9	88.8													
2200	6.5	9	6	97.5	190	167	517 E										
2300	10.0	3	5	41.8													
2400	13.5	3	5	37.6						SSW	H. dly air	B C 6	0.2	1024			54

REMARKS		Initials of the Officer of the Watch
0200 Clark Pt. abn - 1 ml. 1/2		
0255 Egg Is abn - 1 1/2 ml. 1/2		
0730: Egg Island 0.82 x 1 M.		
0800: Egg Island 123 x 1 1/2 M. 0806 Egg Is 350 E (T) 2.6 ml. of N 25 W (C) Increased speed to 60 Revs. per min.		
0819: Hog. 0842 of S 35 E (C) 0900 Hog cleared - 0908 Egg Is 342 E (C) 3.8 ml. 1/2 for Steaming Eng. repairs		
0935: Egg Is S 41 E (T) 3.7 ml. Engine repairs completed. How speed of S 45 E (C) 0950 of Vancouver Is 1/2 ml.		
0954: Revs 100 per min. 1027 revs 160 per min. 1044 revs 125 per min.		
1058: Believed by Lt. J. A. Vancouver; Clark Pt. N 5 E (S) 4 1/2 ml. S 172 W (C) 1130 revs 130 per min.		
1132: Bird Is N 32 E (T) 1 ml. of N 82 W (C). 1132 N. End of Bladney 90 abn N 35 E (S) 1 1/2 ml.		
1200 of N 60 W (C) error 27° E		

Position	Latitude	Longitude	Depending on	Currents experienced
0800	51° 16' N	127° 52' W	Class Bearings	
1200	51° 29.5' N	123° 09.5' W	" "	
2000	52° 20' N	128° 30' W	" "	Tidal

1400	West Pt. 057 - 3.1 ml.	1435	Believed H.M.C.S. Ingonish
1444	Blow-Hud. 55 revs.		
1610	Reduced to 30 revs.		
Watch Correct			
1825	M. Innes Isld. 0.76 1/2 x 7 M.		
1855	Increased speed to 150 Revs. Various speeds to 2200.		
2200	Reduced speed to 40 Revs. A 6.3		
Watch Correct			

Time	Log (stating type)	Distance Run		Mean Revs. per Minute	True Course	STEER Compass Course	Standard Compass Course	Deviation	Variation	Wind		Weather and Visibility	Sea and Swell	Corrected Barometric Pressure in Millibars	Temperature °F			
		Miles	Tenths							Direction (true)	Force (0-12)				Dry Bulb	Wet Bulb	Sea	
0100	94	4	-		111	082	N86E		258									
0200	98.5	4	5		"	"	"		"									
0300	103	4	5		"	"	"		"									
0400	107.5	4	5		"	"	"		"	SE	2	OR 4/7	21	1017			52	
0500	111.5	4	0		108	079	N83E		"									
0600	124.0	12	5		"	"	"		"									
0700					105	076	N81E		24									
0800					Var	Var	Var			SE	1	C.6	0:0	1016	53	50	49	
0900																		
1000																		
1100																		
1200										SSW	2	C.6	-	1015	53	51	49	

Number on Sick List	Distance run through the Water	Zone Time kept at noon	Leave Granted to Ship's Company		Anchor Bearings	
			Anchor Bearings		Anchor Bearings	
	176	P.S.T.	All leave expires 2400 8-6-42.		S. T. 212 00m L. S. T. 104 00h 50m J. Dist 1457 mls	

1300																			
1400																			
1500																			
1600										W 1/2	2	C.R. 6	-	1015	60	57	53		
1700																			
1800																			
1900																			
2000										W 1/2	2	C.R. 6	-	1013	55	52	53		
2100																			
2200																			
2300																			
2400										W	3	C.6	-	1012	54	49	53		

REMARKS					Initials of the Officer of the Watch
0150: Water to show 201' - 2.2 mls Δ 97.5					
Watch Comments					
0435: A/C to N83E(C) Δ 10.0					
0500: San Juan Pt 338° x 6 1/2 M Increased: Speed to 130 Revs.					
0612: Glacier Pt 084° x 5 1/2 M. a/c to N81E(T) ERROR 24°					
0615: Log taken in @ 425.0 (aft 204.0)					
0655: Sheringham Light abeam, 3 M.					
0732: Secretary Island 067° x 2 M: 0745 VARIOUS COURSES to Capt's Order.					
0800: Church Island 030° 1 M : 0815 - Proceeding thru Race Passage 0825 - Passed ^{H.M.C.S.} H.A.R.O. - Examined					
0855 - Larogg's Rk. abeam. : 0900 - Passed Boom Buoy. 0910 along side Refueling Jetty.					
1010 - leave Refueling Jetty : 1025 - made port #4 Buoy					

Position	Latitude	Longitude	Depending on	Currents experienced
0800	42.18 N	124.26 W	Cross Bearings	
1200	Port #4 Esquimaux			
2000				

1245: Liberty men.	
1420: Start easy. 1430 out Pipes	
1630: Liberty Men.	
2000: Watch Comments.	
2325: Challenged Harbour Patrol	

H.M.S. *Dundas* Tuesday 9th of June

Time	Log (stating type)	Distance Run		Mean Revs. per Minute	True Course	STEER Gyro-Compass Course	Standard Compass Course	Deviation	Variation	Wind		Weather and Visibility	Sea and Swell	Corrected Barometric Pressure in Millibars	Temperature °F		
		Miles	Tenths							Direction (true)	Force (0-12)				Dry Bulb	Wet Bulb	Sea
0100																	
0200																	
0300																	
0400										W	1	C 6 H		1014	52	48	53
0500																	
0600																	
0700																	
0800										W	1	C 6		1016	57	54	53
0900																	
1000																	
1100																	
1200										W 1/4	1	OR 6		1017	56	53	53

Number on Sick List	Distance run through the Water	Zone Time kept at noon	Leave Granted to Ship's Company	Anchor Bearings

1300																	
1400																	
1500																	
1600		14.3	143.2	VAR	VAR	VAR			airs	1	5/6 OCR		1017	58	52	52	
1700		15.8	157.9														
1800		15.8	157.5	288	266	S 85 W											
1900		14.6	144.1														
2000		12.6	126.3						W by	1	5/6 OCR	2:4	1017 1/2			52	
2100		11.7	116.8														
2200		9.9	99.6														
2300		10.3	103.3														
2400		10.3	103.0						W by	3	OC	2:5	1019			53	

115.1

1942 From Esquimaux to , and at 214

REMARKS	Initials of the Officer of the Watch
0100 Round correct	JH
0730 Round correct	JH
0800 - Lft #4 Bueth! 0810 Cleared Boom Defense - Increased to 125 Revs.	
0815 - Scruggs Rls NE(C) x 1.5 cables. - GA P/S Exercises with hidden class. 0930 Orders out of order - Proceeding to Harbour	
0955 - Passed Boom Defense 1015 Secured #4 Bueth!	JH

Position	Latitude	Longitude	Depending on	Currents experienced
0800	42° 32' N	124° 57' W	CR	
1200				
2000	42° 32 1/2' N	124° 51' W	CRASS	

1505 - Lft #4 Bueth! 1515 Passed Boom Defense - astern R.W.S. Dawson	
Proceeding 140 Revs. S/C 175° 1557 Increased to 150 revs	
1552 Run Rls to 1/2 mile 1605 Increased to 160 revs 1610 - 170 revs	
1630 Various Rls (at time keeping) 1705 Steaming to the starboard - 1/2 mile	
1742 Proceeded on for Dawson Ex 1742 to 288° T	JH
1902 Reduced to 125 revs 1945 Increased speed to 120 Revs	
2000: Carried Pt 044 x 5 1/2 M 2015: Log Streamed (204 M. 17 H)	
2024: Commenced Zig Zag 2025: Swiftsure Buoy North 2 cables by 28	
Course 270(T) 2029: Speed 100 Revs per min: 2200 A 42.2	

H.M.S. Dundas

Wednesday 10th of June

Time	Log (stating type)	Distance Run		Mean Revs. per Minute	True Course	STEER Gyro Compass Course	Standard Compass Course	Deviation	Variation	Wind		Weather and Visibility	Sea and Swell	Corrected Barometric Pressure in Millibars	Temperature of		
		Miles	Tenths							Direction (true)	Force (0-12)				Dry Bulb	Wet Bulb	Sea
0100	71.	9	-	103.9	180	160	S24E		24E								
0200	80.5	9	5	99.9	"	"	"		"								
0300	90	9	5	101.3	"	"	"		"								5
0400	99.5	9	5	102.5	090	060	N66E		24E	WNW	4	bc 6	4.4	1021			54
0500	109.0	9	5	102.5	"	"	"		"								
0600	119.0	10	-	106.8	"	"	"		"								
0700	128.9	9	9	98.5			N70E										
0800	138	9	9	98.5	270	245	S65W		24E	SW	6	bc 6	4.4	1022	62	55	54
0900	146	8		97.3													
1000	154.2	8	2	98.5													
1100	162.2	8		98.6													
1200	171.4	9	2	101.2	180	159	S25E		24E	SW	4	bc 6	4.4	1025	59	53	55

Number on Sick List	Distance run through the Water	Zone Time kept at noon	Leave Granted to Ship's Company		Anchor Bearings	
	224	P.S.T.			St. 4	20.4 45 m
					Dist 224 mls.	

1300	181	9	6		180	159	S25E		24E								
1400	191	10	-		090	060	N66E		24E								
1500	200.5	9	5		"	"	"		"								
1600	210	9	5		000	335	N25W		25E	WYN	5	bc 7	4.4	1025.5	61	54	56
1700	219	9	-		"	"	"		"								
1800	227.5	8	5		"	"	"		"								
1900	236.5	9			"	"	"		"								
2000	245.8	9	3		"	"	"		"	WN	5	bc 7	4.4	1025.5	56	52	56
2100	255.9	10	1		"	"	"		"								
2200	263	7	0		"	"	"		"								
2300	271.5	7	5		270	245	S65W		25E								
2400	279.5	8	0		270	245	S65W		25E	NW	4	bc 6	4.4	1026			55

198.2

1942

From Patrol to

, and at

REMARKS		Initials of the Officer of the Watch
0045 Negative zig-zag	0048 9/1RD	0050 Executive, Co 180°(T), S24E(C) A 69
0313 - 9/1RD	0315 Executive Co 090°(T) N66E(C) A 92	
0424 Resumed zig-zag	N 20 A 103	
4900 Watch Commenced		
0656 Negative zig-zag	A 28.7	Commence N70E(C) 0705 A/C N27W A 30.8
0735 A/C	S 65°W(C) A 34.4	0800 Resumed zig-zag A 35
1125 Negative zig-zag	A/C 20% Pt - S25°E(C) A 65.7	
1200 Resumed zig-zag	N 20 A 171.4	

Position	Latitude	Longitude	Depending on	Currents experienced
0800	48° 14' N	125° 06'	DR	
1200	48° 16' N	125° 16'	DR	
2000	48° 20' N	125° 05' W	"	Tidal

1255 1RD FN	1300 Executive of 090 Log 281
1532 1RD A	1540 Executive of North Log 307 1/2
1650	Commenced active stations
1800	Watch Commenced
1800	Commenced zig-zag A 227.5
2207	Backed out of N45°E(T) 12 1/2 ml Log 264 1/2 (Course 270)
2300	Negative zig-zag A 271.5

Ambl.

H.M.S. Dundas

Thursday 12th of June

19 42

From Patrol

to

, and at

Time	Log (stating type)	Distance Run		Mean Revs. per Minute	True Course	STEER Gyro Compass Course	Standard Compass Course	Deviation	Variation	Wind		Weather and Visibility	Sea and Swell	Corrected Barometric Pressure in Millibars	Temperature °F		
		Miles	Tenths							Direction (true)	Force (0-12)				Dry Bulb	Wet Bulb	Sea
0100	289	9	5		180	160	S 25 E		24 E								
0200	299	10	-		"	"	"		"								
0300	309	10	-		"	"	"		"								
0400	319	10	-		"	"	"		"	NW	5	oc. 7	54	1027		54	
0500	328	9	-		"	"	"		"								
0600	337	9	-		090	059	N 65 E		"								
0700	347.5	10	5		"	"	"		"								
0800	357	19	5		"	"	"		"	NNW	5	ap 6	31	1028	54	51	56
0900	366.5	9	5		000	337	N 25 W		"								
1000	375.5	9	-		"	"	"		"								
1100	385	9	5		040	014	N 17 E		"								
1200	395.5	10	5		020	353	N 5 W		"	NW	4	ap 31		1027	59	55	55

Number on Sick List	Distance run through the Water	Zone Time kept at noon	Leave Granted to Ship's Company	Anchor Bearings
	223	P.S.T.		Sty. 4. 24 h 00 m Sty. 7. 12 20 h 45 m 7 Dist. 447 mls.

1300	20	8	0		040	011	N 15 E		24 E								
1400	21.5	13	5		"	"	"		"								
1500	35.0	13	5		102	071	N 78 E		24 E								
1600	42.0	13	-		"	"	"		"	WNW	2	oc. 7	21	1028	68	61	54
1700	61	13	-		VAR	VAR	VAR		"								
1800					"	"	"		"		2	C7	21				
1900																	
2000										W	1	B7	00	1028 1/2	67	60	50
2100																	
2200																	
2300																	
2400										W	1	B7	00	1028 1/2	55	52	50

177

REMARKS		Initials of the Officer of the Watch
0042 TRD M. (C-100° 57') 0045 Execution A 84.5		
0532 TRD FN. (C-090° 47') 0530 Execution A 33 0540 Resound 219.249		
Watch Current.		
0816 TRD A 000° Executive Signal at 0818, 0819, 4/2 & N 54/1 (C) A 60.		
1046 - a/c S 64 E (C)		
1100 - Negative zig-zag a/c 040° T. 125 revs Δ 385. 1127 a/c N 20 E T. Δ 90		

Position	Latitude	Longitude	Depending on	Currents experienced
0800	47° 54' N	125° 17' W	D.R.	
1200	48° 2' N	125° 3' W	" "	
2000				

1309	2 BL	1210 Execution (C-070° 57') A 398	1230	to N 15 E (C) A 2	
1405	SN / PO 1 FL 5	Execution 1247	transit to 165 revs	1320 VCO C - G 13	
1330	the station 15 mls on Dawson	from the beam reduced to 135 revs	& Variation of 4 mls		
1403	Retook to abn 130°	- 3.6 mls B 21.5	1410 Retook to log 156°	- 3.2 mls C 102°	
1440	Woods Hole abn 192°	- 1.8 mls A 327	1540 Slip Point to log 192°	- 5.8 mls to Various	
1640	OR I	1643 Execution	1648 G 13	1650 Execution	
1715	Signalled Churchill	1730 log towards 64	1734 Chas. 20 abn	- 1 mls	
1745	Passed Race Rocks E (C)	x 75 M. 1813	Alt. Hd. S 80° W (C) x 1 1/2 M.		
1820	Clear Scraggs Rks.	1825	Passed thru Boom Defence.		
1855	Secured alongside H.M.S. Dawson	Port # 5.			
2000	Rounds correct.	2114	Sunset	2145	Harbor Patrol Hailed

J.M.S.B.

H.M.S. Dundas

Fri day 12th of June

19 41

From

to

, and at Esquimalt

Time	Log (stating type)	Distance Run		Mean Revs. per Minute	True Course	Gyro Compass Course	Standard Compass Course	Deviation	Variation	Wind		Weather and Visibility	Sea and Swell	Corrected Barometric Pressure in Millibars	Temperature °F			
		Miles	Tenths							Direction (true)	Force (0-12)				Dry Bulb	Wet Bulb	Sea	
0100																		
0200																		
0300																		
0400										W	1	B7	00	1028 1/2	50	49	51	
0500																		
0600																		
0700																		
0800										SE	1	B7	00	1029 1/2	57	54	51	
0900																		
1000																		
1100																		
1200										W by air	6.8	00		1028	68	62	51	

Number on Sick List	Distance run through the Water	Zone Time kept at noon	Leave Granted to Ship's Company		Anchor Bearings	
	80	P.S.T			Stg. 7. 6h 25m.	
					Stg. 5. 2h 03h 10m	
					St. Dist. 527 mls.	

Time	Log	Distance Run	Mean Revs. per Minute	True Course	Gyro Compass Course	Standard Compass Course	Deviation	Variation	Wind	Weather and Visibility	Sea and Swell	Corrected Barometric Pressure	Temperature
1300													
1400													
1500													
1600									SE	1	B7	00	1030 69 61 51
1700	At berth "D"												
1800	25 fms ahead of												
1900													
2000									SE	1	B7	00	1028 60 61 51
2100													
2200													
2300													
2400													

Time	REMARKS	Initials of the Officer of the Watch
0345	Harbour Patrol Haired	
0425	Harbour Patrol Haired	
0900	Colours.	

Position	Latitude	Longitude	Depending on	Currents experienced
0800				
1200				
2000				

CAPTAIN (D)
HALIFAX
DEC 17 1943

Time	REMARKS	Initials of the Officer of the Watch
1520	Left #5 Berth for Refuelling Base : 1535 Arrived Refuelling Base	
1625	" Refuelling Base.	
1650	Dropped Port Anchor "D" Anchorage - Bickford Tower 183° - Fishguard Light 219° - Government Wharf 111°	
1700	Assumed duties of harbour <u>Stand by vessel.</u>	
2000	Rounds - Sunset 2115 2.5 6 1/2 fms.	
2300	Haired Harbour Patrol	

Time	Log (stating type)	Distance Run		Mean Revs. per Minute	True Course	Gyro Compass Course	Standard Compass Course	Deviation	Variation	Wind		Weather and Visibility	Sea and Swell	Corrected Barometric Pressure in Millibars	Temperature °F		
		Miles	Tenths							Direction (true)	Force (0-12)				Dry Bulb	Wet Bulb	Sea
0100	At Anchor South						"D"			NW	1	B 6	00	1027	53	53	51
0200	25 fms. Attd. S.																
0400										NW	1	B 7	00	1029	52	51	51
0800										NW	1	B 8	00	1027	58	55	51
1100					VAR	VAR	VAR										
1200										SW 1/4	2	B 7	10	1026.5	58	54	51

Number on Sick List	Distance run through the Water	Zone Time kept at noon	Leave Granted to Ship's Company	Anchor Bearings
		P.S.T.		

Time	Log	Distance Run	Mean Revs. per Minute	True Course	Gyro Compass Course	Standard Compass Course	Deviation	Variation	Wind	Weather and Visibility	Sea and Swell	Corrected Barometric Pressure in Millibars	Dry Bulb	Wet Bulb	Sea	
1300	Anchor D															
1400	25 fms. Port S.															
1600									S	1	B 7	00	1025	66	58	52
2000									S	1	B 7	00	1024.5	64	57	54

REMARKS					Initials of the Officer of the Watch
Harbour stand by vessel.					
0245: Hailed Harbour Patrol.					
0500 Hailed Harbour Patrol.					
0800: Dawson left harbour. 0805- 2.06.7 left harbour.					
1028 Commence weighing anchor. 1233 Anchor weigh. proceeding Engine & film to O/O orders. 1039 Cleared boom. Sped 125 revs. lining with 1/2 class!					
1209. Examina completed. Returning to base. Sped 165 revs.					

Position	Latitude	Longitude	Depending on	Currents experienced	Anchor Bearings
0800	Anchor D				Richford tower 148°
1200	48° 21' N	123° 26' W	X. large		Burgard Lt/Ho. 193°
2000				Tidal	Port Wharf 087°

Time	Log	Distance Run	Mean Revs. per Minute	True Course	Gyro Compass Course	Standard Compass Course	Deviation	Variation	Wind	Weather and Visibility	Sea and Swell	Corrected Barometric Pressure in Millibars	Dry Bulb	Wet Bulb	Sea
1300															
1400															
1305	Engine a below to C.O's orders. 1332. Entered gates. 1349. Let go parts to 25 fms. brought up a F.V.E.														
1345	Emoh alongside - Capt. 1 st Lieut & Patient to Cevenchy.														
1405	Emoh alongside Capt. & 1 st Lieut. Returned on Board.														
2000	Rounds correct.														

H.M.S. *Dundas*

Sunday 14th of June

1942 From _____ to _____, and at _____

Time	Log (stating type)	Distance Run		Mean Revs. per Minute	True Course	Gyro Compass Course	Standard Compass Course	Deviation	Variation	Wind		Weather and Visibility	Sea and Swell	Corrected Barometric Pressure in Millibars	Temperature °F			
		Miles	Tenths							Direction (true)	Force (0-12)				Dry Bulb	Wet Bulb	Sea	
0100	<i>25 fms Astbd of Berth D</i>																	
0200																		
0300																		
0400																		
0500																		
0600																		
0700																		
0800																		
0900																		
1000	<i>Berth No 2</i>																	
1100	<i>Alongside "Edmunston"</i>																	
1200																		

REMARKS					Initials of the Officer of the Watch
<i>Harbour stand by vessel.</i>					
<i>No wind - cloudy - rainy - poor visibility</i>					
<i>0932 - Commenced weighing anchor : 0940 anchor home - Ship proceeding 1/2 speed under 1/2 orders. - 0955 - Secured alongside H.M.C.S. Edmunston # 2 Berth.</i>					
<i>1000 Ceased duties of stand by vessel.</i>					
<i>1200 - Hands to dinner. 1230 - Liberty men</i>					

Number on Sick List	Distance run through the Water	Zone Time kept at noon	Leave Granted to Ship's Company		Anchor Bearings

Position	Latitude	Longitude	Depending on	Currents experienced
0800				
1200				
2000				

1300																		
1400																		
1500																		
1600																		
1700																		
1800																		
1900																		
2000																		
2100																		
2200																		
2300																		
2400																		

1330 - Liberty men	
1745 - Cooks to Galley	
1930 - Clean up for Rounds.	
2000 - Rounds correct	
2110 - Sunset!	

H.M.S.

Dundas Tues day 16th of June

Time	Log (stating type)	Distance Run		Mean Revs. per Minute	True Course	Gyro Compass Course	Standard Compass Course	Deviation	Variation	Wind		Weather and Visibility	Sea and Swell	Corrected Barometric Pressure in Millibars	Temperature °F			
		Miles	Tenths							Direction (true)	Force (0-12)				Dry Bulb	Wet Bulb	Sea	
0100	44.5	5	5	53.4	308	287	N 71 W		25E									
0200	50.5	6	7	63	335	313	N 50 W		25E									
0300	56.0	5	5	63.9			"											
0400	62.0	6	7	62.5			"			SE	3	BR 5/6	23	1015				52
0500	70.5	8	5	94.7			"											
0600	85.0	14	5	155.5			"											
0700	98.0	13	0	154.8	345	320	N 41 W		26E									
0800		15	5	155.3	051	018	N 25 E			NE	1	R. 6	23	1015 1/2	50	48	52	
0900		15	6	156.1														
1000		15	7	156.6	356	338	N 30 W		26E									
1100		15	8	158.3														
1200		15	6	156	351	325	N 35 W			SE	1	BR 7	00	1016 1/2	70	60	53	

Number on Sick List	Distance run through the Water	Zone Time kept at noon	Leave Granted to Ship's Company		Anchor Bearings	
	281	P.S.T.			U. 24 h. 00 m	
					U. 12 03 h 50 m	
					U. Dist 339	

1300		15	4	154.8															
1400		15	4	154.3															
1500		4	8	47.5															
1600										air	-	2.6	00	1019	58	56	52		
1700		9	3	93.4															
1800		15	8	154.9															
1900																			
2000										SE	1	BR 7	00	1021	55	51	52		
2100	At 1/2 in Safety Cove.																		
2200	50 fm. Std of																		
2300																			
2400																			

1942

From West Coast to Patrol, and at

REMARKS		Initials of the Officer of the Watch
0125 Helicopter to shore 035° - 7 miles (RDF) 1/2 N 50 W (C) 25E		
0435 Increased speed to 15K revs. 10.65		
0605 " N 52 W 10.85 : 0650 A/C 320° (Std) 10.95.5 (Log H.E.G. put from)		
0715 - " 335° A 101.0 C. Scott light 2.5 M - log taken in (Pachna Pt. to C. Scott)		
0730 - A/C N 25° E (C)		
0900 One 9th Lt. S 80 E (C) 10 ml. : 0925 - Relieved HMS New Westminster S.E. Egg Is.		
0950 - Egg Is. - Hope Is. Patrol taken over by New Westminster - proceeding to Bella Bella.		
1000 - Egg Is. N 15° E x 3.5 M.		
1200 - Fitzhugh Sound - off Heale Island - Watch Current		

Position	Latitude	Longitude	Depending on	Currents experienced
0800	50° 49' N	128° 20' W	Bearings	
1200	51° 42' N	127° 52' W	D.R.	Tidal
2000	51° 31 1/2' N	127° 54' W	D.R.	

1440	Sounded alongside B.L. Pachna jetty - Bella Bella.			
1500	Signalman McLaughlin discharged to R.C.C.F. Hospital.			
1620	Cast off			
1738	Printer Is. - S 5° E x 3/4 mi.			
1940	Reduced speed to 60 Revs. Hot Bottom End			JME
2030	Dropped anchor Safety Cove - 4 shackles cable attached			
2030	Re-anchored in 17 fm water. 20' brought up to 50 fm chain, F.W.P.			
Officers of watches				
Watch Current				

H.M.S. *Dundas*

Wednesday 17th of June

Time	Log (stating type)	Distance Run		Mean Revs. per Minute	True Course	Gyro Compass Course	Standard Compass Course	Deviation	Variation	Wind		Weather and Visibility	Sea and Swell	Corrected Barometric Pressure in Millibars	Temperature °F			
		Miles	Tenths							Direction (true)	Force (0-12)				Dry Bulb	Wet Bulb	Sea	
0100																		
0200																		
0300																		
0400														1022			51	
0500					1		S 30 E		27 E									
0600		9	2	92.0	177	153	S 30 E		27 E									
0700		11	-	110.0														
0800		7	8	78.3										1024	52	50	52	
0900		8	2	82.0														
1000		6	3	62.6														
1100		5	7	56.5														
1200		6	8	67.5			N 39 W		"	SE	1-2	bc 7	1:1	1024	62	56	50	

Number on Sick List	Distance run through the Water	Zone Time kept at noon	Leave Granted to Ship's Company		Anchor Bearings	
	105	P.S.T.			Stg. V. 13h 00m	
					Stg. V. 10h 16m 50m	
					Stg. V. 444 mls.	

1300		7	-	69.9														
1400		4	4	43.9														
1500		5	6	56.1														
1600		9	5	94.9						SE	1	c 7	1:1	1025	58	53	52	
1700		8	8	88.1														
1800		5	7	57.0														
1900		5	5	54.7														
2000		8	5	85.1						Airs	-	c 7	0:1	1025	54	50	52	
2100		6	9	68.5														
2200		5	4	53.8														
2300		4	1	41.0														
2400		4	4	44.0						Airs	-	c 6	0:1	1025½	-	-	52	

130.6

1942

From West Coast to Patrol, and at

REMARKS					Initials of the Officer of the Watch
Officers Anchor Watches					
0450 S.B.E. commenced weighing anchor 0458 Anchor awigh for proceeding Engine					
2 below to C/O's order 0515 Speed 190 revs 0545 Clock PT by 280° - 3/4 mile					
0530 Contacted K 228.					
0555 s/c S30E (W) 27 E					
0725 - Reduced to 60 Revs.					
Watch Correct					

Position	Latitude	Longitude	Depending on	Currents experienced
0800	51° 09' N	127° 51' W	D. R.	Tidal
1200	51° 14' N	127° 53' W	Bearings	
2000	51° 12' N	127° 52' W	"	

1515 - 100 revs	1547 - 150 revs
1617 - 60 revs	
Egg Is N 5° W (C) x 12 Mi.	
Egg Is N 2° W (C) x 2 Mi.	
Egg Is N 13° W (C) x 3.5 Mi. 1920 Increased to 150 Revs 1933 Reduce to 60 Revs.	
2000 False Egg Island 022° x 7½ M 2025 Egg Isld 086 x 2½ M	
2135 Cape Carter 057 x 5 M - 2140 Reduced speed to 45 Revs.	
Watch Correct	

H.M.S. Dundas

Thursday 18th of June

Time	Log (stating type)	Distance Run		Mean Revs. per Minute	True Course	Gyro Compass Course	Standard Compass Course	Deviation	Variation	Wind		Weather and Visibility	Sea and Swell	Corrected Barometric Pressure in Millibars	Temperature °F		
		Miles	Tenths							Direction (true)	Force (0-12)				Dry Bulb	Wet Bulb	Sea
0100		4	2	42.2	D.G. ON - Patrol Egg Is to												
0200		4	2	41.8	Pine Is.												
0300		4	7	47.4	Various Courses												
0400		4	8	48.1	"					Airs	1	0.0	0.2	1025.5			50
0500		4	3	42.9	"												
0600		4	8	48.0	"												
0700		4	7	47.0	"												
0800		7	7	46.6	"					Airs	0	0.6	0.0	1026	53	50	50
0900		10	3	103.0	"												
1000		6	5	65.0	"												
1100		6	8	67.9	"												
1200		10	2	102.4	"					Airs	1	0.7	0.1	1027	64	56	50

Number on Sick List	Distance run through the Water	Zone Time kept at noon	Leave Granted to Ship's Company		Anchor Bearings	
	135	P.S.T.			Sty. H. 24 L 05m	
					Sty. H. 2d 16 L 50m	
					St. Dist 579 mls	

1300		6	5	65.4	D.G. ON - Various courses												
1400		8	8	87.8	"												
1500		5	9	59.4	"												
1600		5	9	58.8	"					NNW	1	0.7	0.2	1026 1/2	60	53	55
1700		11	2	112.1	"												
1800		5	8	57.6	"												
1900		5	8	58	"												
2000		6	-	60.1	"					Wly	1	0.7	1.2	1027	62	56	53
2100		11	4	114.1	"												
2200		6	1	61.3	"												
2300		4	9	49.5	"												
2400		6	-	60.5	"					Wly	1	0.6		1027 1/2			55

1575

1942

From West Coast Patrol to

, and at

REMARKS										Initials of the Officer of the Watch
0330 Egg Is by 090° - 1 1/2 mls. W										
Watch Correct										
Watch Correct										
Storm T. 075° T. x 3 mi. increased to 125 revs. 0825 - 100 revs.										
Egg Is. 014° (T) x 3.5 M 1115 - Relieved by HMS Dawson - Egg to Pine Is Patrol										
1145 - Relieved by HMS Dawson Egg Is. to Clarke Pt. Patrol 1200 - False Egg Is. 058° (T) x 3 M										

Position	Latitude	Longitude	Depending on	Currents experienced
0800	51° 01' N	127° 48' W	D.R.	Tidal
1200	51° 18' N	127° 52' W	Com Bearings	Tidal
2000				

1245	increased speed 170 revs - 1320 reduced speed - 60 revs. False Egg Is. 558° (C) x 6 mi.			
1420	Egg Is. Lt. 122° T. x 4.5 mi.			
1500	False Egg Is. - 022° T. x 3 mi.			
1600	100 revs - 1610 - 150 revs. 1640 - reduced to 60 revs.			
1700	Egg Is. - 540° E (C) x 7 mi.			
1800	N edge Tall Is. 097° T. x 1.5 mi.			
1900	Clarke Pt. 353° (T) x 3 M.			
2000	False Egg Is. 127° x 2 1/2 M.			
2007	Increase speed to 150 Revs. 2024: Reduce speed to 125 Revs.			
2050	60 Revs. 2145 - 125 Revs. 2205: Decrease to 45 Revs.			
Watch Correct				

misc

1575

Time	Log (stating type)	Distance Run		Mean Revs. per Minute	True Course	Gyro Compass Course	Standard Compass Course	Deviation	Variation	Wind		Weather and Visibility	Sea and Swell	Corrected Barometric Pressure in Millibars	Temperature °F			
		Miles	Tenths							Direction (true)	Force (0-12)				Dry Bulb	Wet Bulb	Sea	
0100		4.4		44.3	D.G. ON.													
0200		4.2		41.5	Patrol Egg Is. to													
0300		4.6		45.9	Clark Point													
0400		4.5		44.8	"					W 1/4	1	BC 7	02	1027.5				52
0500		4.3		43.4	"													
0600		4.4		43.6	"													
0700		4.4		43.7	"													
0800		4.3		42.9	"					SE	1	BC 7	0:1	1028	57	53	55	
0900		4.3		43.9	"													
1000		6.7		66.6	"													
1100		6.7		66.8	"													
1200		4.3		42.6	"					SW	1	BC 7	0:1	1028	59	53	55	

Number on Sick List	Distance run through the Water	Zone Time kept at noon	Leave Granted to Ship's Company	Anchor Bearings
	128	P.S.T.		Stg. Y. 24 h 00 m Stg. Y. 3 d 16 h 50 m Y. Dist 707 mls.

1300		3.9		39	D.G. ON.													
1400		4.3		42.5	Various courses													
1500		4.8		47.7	"													
1600		4.2		42.4	"					SW	1	BC 7	01	1028	61	55	54	
1700		9.9		98.7	"													
1800		6.7		66.5	"													
1900		4.6		46	"													
2000		8		80	"					SW	1	6.7	0.1	1028	58	52	55	
2100		13.1		131	"													
2200		8.8		88.1	"													
2300		4.9		49.6	"													
2400		4.5		45.4	"					SW	1	6.6	0.1	1029	-	-	55	

131.6

Time	REMARKS	Initials of the Officer of the Watch
0100	Clark Point to log 270° - 1 mi. 1/2	
0400	Egg Is. to log 090° - 1 1/2 mls. 1/2	
0600	Watch correct	
0700	Clark Pt. light 343°(T) x 1.5 M.	
0800	False Egg Is. 115°(T) x 3.5 M.	
1100	False Egg Is. 102°(T) x 3.5 M.	
1200	Egg Is. 147°(T) x 3.5 M. Watch correct	

Position	Latitude	Longitude	Depending on	Currents experienced
0800	51° 21' N	127° 53' W	Cross Bearings	Tidal.
1200	51° 16' N	127° 55'	"	
2000	51° 15' N	127° 52 1/2'	"	

1324	Egg Is. Lt. 155° T x 4 mi.	
1400	Egg Is. Lt. 555° E(C) x 1.5 mi.	
1500	Clark Pt. 357° T x 6 mi.	
1600	Watch correct. Cranston Pt. 087° x 4 mi. 1610 - slow speed to 125 revs.	
1730	Clark Pt. 341°(C) x 1 mi.	
1900	Egg Is. 131°(T) x 3 M. 2000 - Egg Is. 090° x 1 1/2 M.	
2141	Increased speed to 170 REVS. ²⁰⁰³ Increased speed to 180 REVS.	
2206	Reduced speed to 90 REVS. 2125 - Increased to 125 REVS.	
2142	Reduced speed to 45 REVS.	
	Watch correct.	

131.6

Time	Log (stating type)	Distance Run		Mean Revs. per Minute	True Course	Gyro Compass Course	Standard Compass Course	Deviation	Variation	Wind		Weather and Visibility	Sea and Swell	Corrected Barometric Pressure in Millibars	Temperature of			
		Miles	Tenths							Direction (true)	Force (0-12)				Dry Bulb	Wet Bulb	Sea	
0100		4	2	41.6														
0200		4	1	41.3														
0300		4	3	43.2														
0400		4	1	41.4						WNW	1/2	B.C. 7	12	1029			54	
0500		6	3	63.1														
0600		5	1	50.6														
0700		4	1	40.9														
0800		4	3	42.7						SW	1	B.C. 7	0:1	1029	58	53	54	
0900		4	4	40														
1000		13	6	136														
1100		15	1	150.6														
1200		15	2	151.5	329	304	N58W		27E	W 509	1	B.C. 7	0:1	1029	64	57	56	

Number on Sick List	Distance run through the Water	Zone Time kept at noon	Leave Granted to Ship's Company		Anchor Bearings	
	155 mls.	P.S.T.			Stg. T. 24h 00m	
					Stg. T. 4h 16h 50m	
					T. Dist. 862 mls.	

1300		15	1	150.8	003	336	N24W		27°E									
1400		15	4	154.1			various courses to Capt. O'Shea											
1500		13	7	136.9	191	170	S16E		27E									
1600		9	4	93.8						SW	1	B.7	01	1030	63	55	57	
1700		10	4	99.7														
1800		9	8	98.4	349	321	N88W											
1900		10	4	103.7														
2000		10	7	106.7						SW	1	B.8	01	1030	60	54	57	
2100		16	4	160														
2200	0	13	9	138.5	175	152	S32E											
2300	4.0	4	4	58.8														
2400	7.5	3	5	44							0	B.C. 6	01	1031 1/2			56	

REMARKS		Initials of the Officer of the Watch
0205 Egg Is. buoy 090° - 1 1/2 mls. S/W		
0415 - 125 revs 0503 - 45 revs		
0530 Clark Pt. 270° - 3/4 mls. S/W		
Watch correct		
0700 - Egg Is. 157°(T) x 5 M.		
0800 - " " 097°(T) x 2.5 M.		
0910 - Relieved by Dawson - Increased to 155 Revs. Egg Is. 132°(T) x 2.5 M.		
0915 - A/C N47W(C) 0940 A/C - N67W		
1014 Dalachney Pt. N40 E(T) 1 ml. 1023 A/C N58W(C)		
1200 - A/C N41W(C) 330(S) <i>J. M. Cameron</i>		

Position	Latitude	Longitude	Depending on	Currents experienced
0800	51° 15' N	127° 5' W	Com Bearing	Tidal
1200	51° 50' N	128° 30' W	"	"
2000	52° 22' N	128° 22' W	"	"

1300	A/C N24W(C) 1322 9 revs 90 24.10 N29W(T) 9 ml. A/C N7W(C) 1400 A/C 90° Orders
1430	Vancouver Pt. buoy South 2 cables
1445	Vancouver Pt. buoy N96E(T) 2.4 mls. S/C S16E(C) Revs 100 per min.
1500	Day Pt. - 237° T x 3 mi.
1600	Watch correct. McInnes Island 334° T x 6.5 mi. - 1630 - Relieved New West.
1720	West Pt. S76E(T) 7 ml. A/C N38W(C)
1800	McInnes Is. - 003° T x 2.5 mi.
1900	McInnes Is. - 043°(T) x 3.5 M.
2000	Munro Island N80W x 6 1/2 M
2040	Increase speed to 140 Revs. A/C 90° Orders 2205 Now - 45 revs.
2213	Jaffrey Pt. S60 E(T) 2 1/2 ml. S/C S32E(C) Streamed log @ 0.
	Watch Correct <i>J. M. Cameron</i>

H.M.S. Dundee

Monday 29th of June

Time	Log (stating type)	Distance Run		Mean Revs. per Minute	True Course	Gyro Compass Course	Standard Compass Course	Deviation	Variation	Wind		Weather and Visibility	Sea and Swell	Corrected Barometric Pressure in Millibars	Temperature °F			
		Miles	Tenths							Direction (true)	Force (0-12)				Dry Bulb	Wet Bulb	Sea	
0100		5	3	52.6	D.G. ON													
0200		5	9	59.5	Patrols C. Swine													
0300		6	1	60.6	to Prince Is.													
0400		6	6	65.5	Vicious Current					Wind	1	02.7	0.2	1029	58	54	58	
0500		9	1	91.2														
0600		9	2	92.2														
0700		9	1	90.5														
0800		9	-	90.3						Wind	1	02.7	0.2	1027 1/2	58	54	58	
0900		9	1	90.5														
1000		4	4	43.6														
1100		8	8	88.1	167	144	S 40 E											
1200		12	5	124.6	"	"	"	27 E S S E	2-3	0d. 6	1:2	10.27	60	56	57			

Number on Sick List	Distance run through the Water	Zone Time kept at noon	Leave Granted to Ship's Company	Anchor Bearings
195	P.S.T.		Stg. 5 24h 00m T. Stg. 4 6d 16h 50m T. Dist 1285 mls.	

1300	10	7	106.8	145	118	S 62 E	27 E											
1400	8	3	83.2	329	302	N 62 W	--											
1500	9	4	93.8	162	135	S 48 E	--											
1600	9	3	93	167	140	S 44 E	--	SSE	5	1.6	34	1027	54	53	57			
1700	9	3	92.6	387	320	N 40 W	--											
1800	11	9	118.8	178	151	S 31 E												
1900	16.0	15	150.7															
2000	29.5	13	156.7					SSE	2	0.8 1/2	1.3	1026	55	52	57			
2100	44.5	15	160															
2200	59.0	14	158															
2300	72.5	13	152.1	167	143	S 39 E												
2400	85.5	13	149.6	143	115	S 59 E												
				125	100	S 81 E		SW	1	0.8 1/2	0.2	1025 1/2			55			

228.6

1942

From West Coast Patrols, and at

Time	REMARKS	Initials of the Officer of the Watch
	A/c Patrols; courses various.	
	2350. Increased to 90 revs.	
	Watch correct.	JTB
	1115 - A/C S 40 E (C) 125 Revs.	
	1200 - Prince Is. 072° (T) x 7 M. Watch correct.	JTB

Position	Latitude	Longitude	Depending on	Currents experienced
0800	52° 15' N	128° 34' W	Bearings	
1200	52° 05' N	128° 40' W	"	
2000	51° 28' N	128° 31' W	D.R.	Tidal

1233	A/C S 62 E (C) reduced to 90 revs. 1320 - S edge Gorse Is. - 062° T x 6 mi
1400	A/C N 62 W (C) Gorking Rocks - N 30 E (C)
1520	West Rock - S 85 E x 3 1/2 mi. A/C S 48 E (C) - 1530 - A/C S 40 E (C)
1603	A/C S 62 E (C) - West Rock - N 25 E (C) x 4 1/2 mi. Watch correct.
1620	A/C N 40 W (C) - West Rock - 016° T x 6 1/2 mi.
1754	N. edge Gorse Is. 040° T x 6 mi. A stream 9 m to 0.5 A/C S 31 E. obs. 155 m / ml
1900	White Cliff Is. 067° (T) x 12 M Δ 16.0
2000	A 29.5
2215	A/C to S 25 E (C)
2244	A/C to S 39 E (C) A/C Cl. Is. by 097° - 1.8 mls
2318	Winifred Is. by 079° - 2.7 mls 1/2 S 59 E (C) A 76
	Watch correct. 2355 Budy Is. 057° - 2.1 mls A 81 1/2 S 81 E (C)

Time	Log (stating type)	Distance Run		Mean Revs. per Minute	True Course	STEER Gyro Compass Course	Standard Compass Course	Deviation	Variation	Wind		Weather and Visibility	Sea and Swell	Corrected Barometric Pressure in Millibars	Temperature °F		
		Miles	Tenths							Direction (true)	Force (0-12)				Dry Bulb	Wet Bulb	Sea
0100		13	1	131.2	VAR	VAR	VAR										
0200		5	9	58.5	259	235	S53W		26E								
0300		5	3	53	"	"	"										
0400	114	5	9	59.3	079	045	N53E			WNW	2/3	OR 5-6	2.2	1025			54
0500		15	7	157.4	Various to												
0600		16	1	161.3	C/O's Under												
0700		13	5	134.9													
0800		15	4	153.7						NW	2-3	OR 4-5	0:0	1025	55	51	52
0900		15	8	157.8	306	289	N79W		26E								
1000	16.0	15	8	157.5													
1100		15	6	156.1													
1200		15	8	157.5	047	015	N70E		27E	NW	1-2	OC 6	0:1	1025	60	54	74

Number on Sick List	Distance run through the Water	Zone Time kept at noon	Leave Granted to Ship's Company		Anchor Bearings	
	274	P.S.T.			Sty. V. 24h 00m	
					V. Sty. V. 7d 16h 50m	
					V. Dist. 15.09 mls.	

1300		11	2	112.1													
1400		6	-	60.2													
1500		10	4	105.7													
1600		5	9	58.8										1026	62	56	54
1700		6	-	60.2													
1800		9	-	90.4													
1900		8	8	87.9													
2000		6	2	61.7	202	175	S5E		27E	ans. Wly		60.7	0:1	1025	59	56	58
2100		5	9	59													
2200		5	4	54	005	340	N19W		26E								
2300		5	7	56.5	187	160											
2400		6	1	61	187	162	S19E		26E	Wly	1	60.6	0:1	1024			57

240.7

REMARKS															Initials of the Officer of the Watch
0050 Slow Speed 60 revs. Various courses to 90's order.															
0120 Hains by log 058° - 0.4 mls. S53W (c) 0.994															
0225 " 1/53E A10 0400 Half Speed 150 revs A16															
0415 " various 0430 Hains by log 005 - 0.5 mls. Various courses to 90's order															
0524 Breaker Is. 0535 Hated Is. 0567 Lesson Pt.															
Watch correct 0630 Port Alice. Turned around & proceeded															
0737 Holloway Pt. 0807 May Is.															
0845 Hains Is. Pt. N60E (FS) 1 mls. Sp. N79W (c) 0846 - Log Streamed Δ 0															
0925 - AK N56W (c) Δ 7.															
1005 - A/C N40W (c) 1050 A/C N20E (c) Log taken in Δ 27.															
1200 - Pine Isld. 094° (T) x 14 M. Watch correct															

Position	Latitude	Longitude	Depending on	Currents experienced
0800	50° 29' N	127° 51' W	D.R.	
1200	51° 00' N	128° 07' W	Cross Bearings	
2000	51° 06' N	127° 54' W		Tidal

1237 - 125 revs. Relieved HMCS New Westminster off Cape Caution.	
1310 - A/C N20W (c) Reduced to 60 Revs. - 1400 - 125 revs. 1450 - 60 revs.	
1500 - Egg Is. 075° T x 2 mi.	
1600 - Watch correct. Cape Caution - 059° T x 3 mi.	
1740 - 125 revs. - Egg Is. - 042° T x 6 mi.	
1800 - Cape Caution 088° T x 3 mi.	
1824 - Reduced speed to 60 Revs.	
1900 - Relieved on Egg Isld. - Pine Isld. Patrol by HMCS Guysborough. 1910 - Sp. S57E (c)	
2000 - Pine Isld. - 140° x 10 M.	
2100 - Pine Isld. - 112° x 9 M. 2130 - Pt Ash by 152 x 2 2/3 M. Sp. N19W (c)	
2330 - A/C S19E (c)	
Watch correct	

msc

msc

H.M.S. *Dundas*

Wednesday 24th of June

Time	Log (stating type)	Distance Run		Mean Revs. per Minute	True Course	Gyro Compass Course	Standard Compass Course	Deviation	Variation	Wind		Weather and Visibility	Sea and Swell	Corrected Barometric Pressure in Millibars	Temperature °F			
		Miles	Tenths							Direction (true)	Force (0-12)				Dry Bulb	Wet Bulb	Sea	
0100		5.9		59.0														
0200		6.1		60.1														
0300		6.2		62.1														
0400		6.1		61.3						NW	2	0.C.4	1.2	1024.5				52
0500		6.1		61.3														
0600		9.8		97.5														
0700		7.6		75.6														
0800		5.9		58.8						NW	1	C.6.7	0.1	1024	54	51.5	52	
0900		5.8		58.0														
1000		6.1		61.3														
1100		6.3		62.8														
1200		9.7		96.5						NW	1-2	C.7	1:1	1024	62	56.5	54	

Number on Sick List	Distance run through the Water	Zone Time kept at noon	Leave Granted to Ship's Company		Anchor Bearings	
	151	P.S.T.			Stn. 4. 24.2 00 m	
					Stn. 5. 8d 16h 50 m	
					Stn. Dist 1660 mls	

1300		12.3		123.0															
1400		7.6		75.5															
1500		6.4		63.9															
1600		7.3		73.2						NW	1	6.7	0.1	1024	67	63.5	50		
1700		7.8		77.5															
1800		8.2		81.8															
1900		8.5		84.7															
2000		6.5		64.5						NW	1	6.7	1.1	1024	57	54.5	52		
2100		6.9		69.3															
2200		14.7		146.5															
2300		15.0		150.1															
2400	13.5	7.1		70.8						NW	1	6.6	1.1	1023.5			52		

179.8

1942

From West Coast Patrol

, and at

REMARKS										Initials of the Officer of the Watch
0145 -										
0510 Pine Is. bearing 090° - 2.7 mls. 0520 Half speed 125 revs. 0535 Speed 105 revs. Watch correct. 0605 Speed 60 revs.										
0705 - Pine Is. 109°(T) x 3 M.										
0800 - Secretary Pt. 112°(T) x 3 M.										
0900 - C. Caution 043°(T) x 9 M.										
1000 - Egg Is. 032°(T) x 7.5 M.										
1200 - Egg Is. 064°(T) x 2.5 M. - 125 revs. Watch correct.										

Position	Latitude	Longitude	Depending on	Currents experienced
0800	50° 58' N	122° 58' W	Cross Bearings	
1200	51° 14' N	127° 53' W	D. R.	
2000	51° 12' N	127° 55' W	Cross Bearings	Tidal

1310 - 75 revs - slow speed. 1350 - Pine Is. - 084° T x 10 mi.	
1445 - Pine Is. - 116° T x 11 mi.	
1600 - Egg Is. - 042° T x 8.5 mi. Watch correct.	
1700 - Pine Is. - 101° T x 10.5 mi.	
1814 - Increase speed to 150 Revs. 1824 - Half speed 125 Revs. 1835 - Slow speed 75 Revs.	
1900 - C. Caution 067°(T) x 8 M.	
2000 - Egg Island 040° x 4.5 M. - 2101 - Increased speed to 125 Revs. 9/16 to N 45 W (C).	
2110 - Increased speed to 150 Revs. 2127 - 9/16 to N 70 W (C). Clarke Pt. 043° x 4 M.	
2234 - Lag Streamed (416.7 aft) A.O. in W.H. 19/c to N 59 W (C)	
2240 - A/c to S 80 E (C) 2303 - Blakeny Isld 4 Pts. A 7.0. 2310 - Blakeny Isld abm. 8.7	
2310 - speed to 125 Revs. 2311 - speed to 60 Revs. 2313 - 5/16 S 84 E (C). Watch correct.	

H.M.S. Dundas

Thursday

25th of June

Time	Log (stating type)	Distance Run		Mean Revs. per Minute	True Course	Gyro Compass Course	Standard Compass Course	Deviation	Variation	Wind		Weather and Visibility	Sea and Swell	Corrected Barometric Pressure in Millibars	Temperature of F			
		Miles	Tenths							Direction (true)	Force (0-12)				Dry Bulb	Wet Bulb	Sea	
0100	18	5	5	48.1	D.G. ON													
0200	23.5	5	5	57.4	Patrol Queen													
0300	30.0	6	5	63.8	Charlotte Sound													
0400	36.0	6	5	62.3						NW	2/3	C.7	22	1022			56	
0500	41.5	5	5	60.1														
0600	47.0	5	5	60.														
0700	53.1	6	1	60.2														
0800	58.3	5	2	60.3						airs	0-1	C-6	1:1	1022	60	56	52	
0900	64.0	5	7	64.5														
1000		8	-	79.8														
1100		7	7	77.2														
1200		7	5	75.						W.	2-3	0-6	1:2	1022	64	58	52	

Number on Sick List	Distance run through the Water	Zone Time kept at noon	Leave Granted to Ship's Company		Anchor Bearings	
	169	P.S.T.			Sty. 4	24h 00m
					Sty. 4	9d 16h 50m
					St. Dist	1829 mls

1300		7	6	76.														
1400		12	8	128.2														
1500		10	9	109.														
1600		7	4	73.9						SW	2	bc6	1:2	1022 1/2	68	58	53	
1700		13	1	131.4											60			
1800		7	3	72.6														
1900		7	5	75.1														
2000		8	5	84.8						WNW	2	bc6	1:2	1023	60	57	52	
2100		8	2	81.5														
2200		7	3	72.6														
2300		4	6	46.1										1024 1/2				
2400		5	2	52.2						SW	1	bc6	0:2	1024 1/2			52	

175.1

1942

From West Coast to

, and at

REMARKS		Initials of the Officer of the Watch
0140	Clarke Pt. 000 - 4 mls.	
0225	Egg Is. 090° - 2 1/2 mls. A 26.5	
0500	Egg Is. 090° - 1 1/4 mls. A 41.5	
	Watch Connect.	
0700	Fake Egg. 115°(T) x 4 M. A/C S 25 E(c)	
0800	Egg Is. 092°(T) x 3 M. - 0835 - 75 revs.	
0900	Pine Is. 143°(T) x 12 M. - log taken in.	
1000	Pine Is. 101°(T) x 7.5 M. - 1015 A/C N 25° W(c).	
1200	Egg Is. 049°(T) x 6 M. Watch Connect	

Position	Latitude	Longitude	Depending on	Currents experienced
0800	51° 15' N	127° 54' W	Cum. Bearing	
1200	51° 10' N	127° 57' W	"	
2000	51° 5' N	127° 53' W	"	Tidal



1310	A/C proceeded to carry out Pine-Egg Is. Patrol for Chignecto - 150 Revs.	
1355	100 revs.	
1412	75 revs. Cape Caution 117° T x 2.5 mi. 1422 - half speed - 100 revs.	
1502	75 revs. - 1610 - 100 revs. 1600 - Pine Is. - 149° T x 10 mi. Watch connect.	
1651	75 revs. 1750 - Pine Is. 103° T x 3 mi.	
1800	Cape Caution 022° T x 7 mi.	
1900	Egg Is. 006° x 3 1/2 M.	
2000	Cape Caution 036° x 6 M.	
2200	Reduced speed to 50 Revs.	
2220	Egg Island 010° x 6 M.	
	Watch Connect	

H.M.S. *Dundas*

Friday 26th of June

Time	Log (stating type)	Distance Run		Mean Revs. per Minute	True Course	STEER Gyro Compass Course	Standard Compass Course	Deviation	Variation	Wind		Weather and Visibility	Sea and Swell	Corrected Barometric Pressure in Millibars	Temperature °F		
		Miles	Tenths							Direction (true)	Force (0-12)				Dry Bulb	Wet Bulb	Sea
0100		5	3	53	147	150	S30E		27E								
0200		5	4	53.5	"	"	"										
0300		4	5	44.5	"	"	"										
0400		4	9	49.3	"	"	"			WSW	3	B. 5/6	22	1025.5		52	
0500		5	5	54.7	004	337	N23W		27E								
0600		5	3	53.1	"	"	"										
0700		5	2	52.1	"	"	"										
0800		4	9	49.3	"	"	"			WSW	2	C. 5-6	1-2	1027	58.5	52	
0900		4	9	48.6	"	"	"										
1000		4	8	47.6	"	"	"										
1100		6	1	60.9	"	"	"										
1200		7	6	76.1	347	323	N40W		27	SW	1-2	B.C. 7	1-2	1027	65	60	54

Number on Sick List	Distance run through the Water	Zone Time kept at noon	Leave Granted to Ship's Company		Anchor Bearings	
	147	P.S.T.			Stg. 7. 2 h to 00 m.	
					Stg. 4. 10 h 16 h 50 m	
					St. Dist. 1976 mls	

1300	4	7	47		Course to Capt's orders												
1400	12	5	124.4	226	199	S19W		27E									
1500	15	3	152.5	"	"	"		"									
1600	19	15	150.8		Course to Capt's orders			SW	1	C. 7	1-2		1029	62	58	52	
1700	17	6	160.4	156	130	S52E		26E									
1800	31	0	162.3	"	"	"		"									
1900	45	7	161	131	104	S74E											
2000	60	5	161.1	131	104	S74E		SW	1	C. 6	2-2		1028	56	54	53	
2100	76	0	155.6														
2200	89	0	155.1	116	086	S90E											
2300	101	0	118.8	"	"	"											
2400	108	0	13.6	125	096	S81E		SW	1	B.C. 5/6	1-2						

218.1

1942

From West Coast Patrol, , and at

REMARKS															Initials of the Officer of the Watch
0030 Egg Is. 09.0 - 2 mls. ^W S30E (C)															
0415 Sighting Pt. 112 - 1 mls. ^W N23W (C)															
Watch Correct. Vessel rolling easily															JMS
0715 - A/c S35E (C)															
Watch correct.															
0900 - Storm Sols. 10.3 (T) x 7 M															
1000 - Cape James - 14.2 (T) x 4 M. A/c N23W (C)															
1100 - Increased to 12.5 Revs. Half Speed. A/c C. 6.5. Orders - 1130 - Reduced to 5.0															
1200 - C. Caution 0.22 (T) x 5 M. Watch Correct															JMS

Position	Latitude	Longitude	Depending on	Currents experienced
0800	51.10N	127.53W	D.R.	
1200	51.05N	127.50W	Cross Bearing	
2000	49.55N	127.37W	D.R.	Tidal

1310	12.5 Revs. 1330	Revised by HMPS Dawson - 15.5 Revs. s/c S19W (C)	
1400	Pinto 127° T x 14 mi. 1430	Mexicana Pt. S68E (C) x 10 mi.	
1500	Cape Scott 217° T x 10 mi. 1530	Round Cape. ^{course to} Capt's orders. 1548	
1600	streamed & set to 0. 1600	Watch correct. 1618 s/c S52E (C) Δ 6.5	
1712	Rain T. H. N48W (C)	Visibility poor mist.	
1850	A/c to S74E (C) A44		JMS
2116	A/c to S90E (C) A78.5	2206 - Reduced Speed to 5.0 ^{Revs} A90.5	
2209	Increased speed to 16.5 Revs.		
2240	Slow speed 60 Revs. A98.5		
2345	A/c to S81E (C) A99		
Watch Correct			JMS

Time	Log (stating type)	Distance Run		Mean Revs. per Minute	True Course	STEER Gyro-Compass Course	Standard Compass Course	Deviation	Variation	Wind		Weather and Visibility	Sea and Swell	Corrected Barometric Pressure in Millibars	Temperature °F				
		Miles	Tenths							Direction (true)	Force (0-12)				Dry Bulb	Wet Bulb	Sea		
0100	113.5	5	5	62.4	125	096	S 81 E		26 E										
0200	119.5	6	-	60.1	"	"	"		"										
0300	125.5	6	-	58.	"	"	"		"										
0400	131.5	6	-	47.4	"	"	"		"	WSW 2	5/6 05 m	22	1029				53		
0500	142	10	5	131.3	115	085	N 89 E		"	WSW									
0600				159.2	VAR	VAR	VAR												
0700				162.8															
0800	187.0			162.6						WSW	1.2	CD 3	1.1	1028	59	55	53		
0900				132.5															
1000				142.8															
1100				159.6	To Capt's order														
1200	243.5			161.1					24 E	WSW	1	bc 2	0:0	1030	62	58	51		

Number on Sick List	Distance run through the Water	Zone Time kept at noon	Leave Granted to Ship's Company	Anchor Bearings	
				By H.	By G.
	287	P.S.T.		By H. 240 00 m	By G. 112 16 50 m
				T. Dist 2263 m	

1300																			
1400																			
1500																			
1600																			
1700																			
1800																			
1900																			
2000										SE	1	68	0:0	1029 1/2	60	59	52		
2100																			
2200																			
2300										airs	-	66	0:0	1030	59	57	52		
2400																			

REMARKS										Initials of the Officer of the Watch
0415 1/2 N 89 E (C) 26 E. A 33. 1/2 speed 155 revs										
0540 1/2 West										
0630 Amphitrite to Bay 340°-38 m. 1/2 S 25 E A 65										
0715 - A/C N 80 E (C) A 75. 0737 A/C S 88 E (C) A 80 1/4										
0850 - Reduced to 75 Revs. A 97.8										
0911 - A 100.5 Increased to 1/2 Speed. 0925 A/C N 88 E (C) A 103.5										
0956 - A 11.0 A/C N 82 E (C)										
1100 - A/C Proceeding under E.O. (under)										
1200 - Race Rocks 098°(T) x 12 M. Watch correct										

Position	Latitude	Longitude	Depending on	Currents experienced
0800	48° 39' N	124° 57' W	D. R.	Tidal.
1200	48° 19' N	123° 51' W	Anchor Bearings	
2000	-	-	-	

1240	Log in: 49.5	1245 - Oscillator housed.	1310 - Buoy Rb beam
1315	Passed thru Buoy	Deposited to Buoy 9.	
1345	Made fast #9 Buoy		
1625	Lift #9 Buoy for Oil Jolly		
1720	Arrived Oil jolly		
1830	Lift Oil jolly		
1900	Secured alongside Caraqueat #4 Buoy		
2000	Rounds		
2120	Sunset		
2200	Hailed Harbour Patrol		

H.M.S.

Sunday 28th day of June.

19 42

From

to

, and at Esquimaux.

Time	Log (stating type)	Distance Run		Mean Revs. per Minute	True Course	Gyro Compass Course	Standard Compass Course	Deviation	Variation	Wind		Weather and Visibility	Sea and Swell	Corrected Barometric Pressure in Millibars	Temperature °F		
		Miles	Tenths							Direction (true)	Force (0-12)				Dry Bulb	Wet Bulb	Sea
0100																	
0200																	
0300																	
0400										Wly	air 67	010	1030	58	56	52	
0500																	
0600																	
0700																	
0800										Wly	air 68	010	1031	62	59	52	
0900																	
1000																	
1100																	
1200										airs	8.8	010	1031.5	67	62	52	

Number on Sick List	Distance run through the Water	Zone Time kept at noon	Leave Granted to Ship's Company	Anchor Bearings	
	22	P.S.T.		Up. 4. 1 h 15 m	
				5. Up. 4. 1 h 14 m 05 m	
				7. Dist 2285 mls.	

1300																	
1400																	
1500																	
1600										Sy	1	B.R	010	1031	73	66	54
1700																	
1800																	
1900																	
2000										Calms	010	B.R	010	1031	83	77	56
2100																	
2200																	
2300																	
2400										Calms	010	B.R	010	1030	69	65	56

REMARKS		Initials of the Officer of the Watch
0340 - Hailed Harbour Patrol.		
0735 - Hailed Harbour Patrol.		
0900 Colours.		

Position	Latitude	Longitude	Depending on	Currents experienced
0800				
1200	Benth	N 2 E 4		
2000				Tide

CAPTAIN (D)
HALIFAX
DEC 17 1943

2015	Bounded Esquimaux	
2230	Hailed Harbour Patrol	

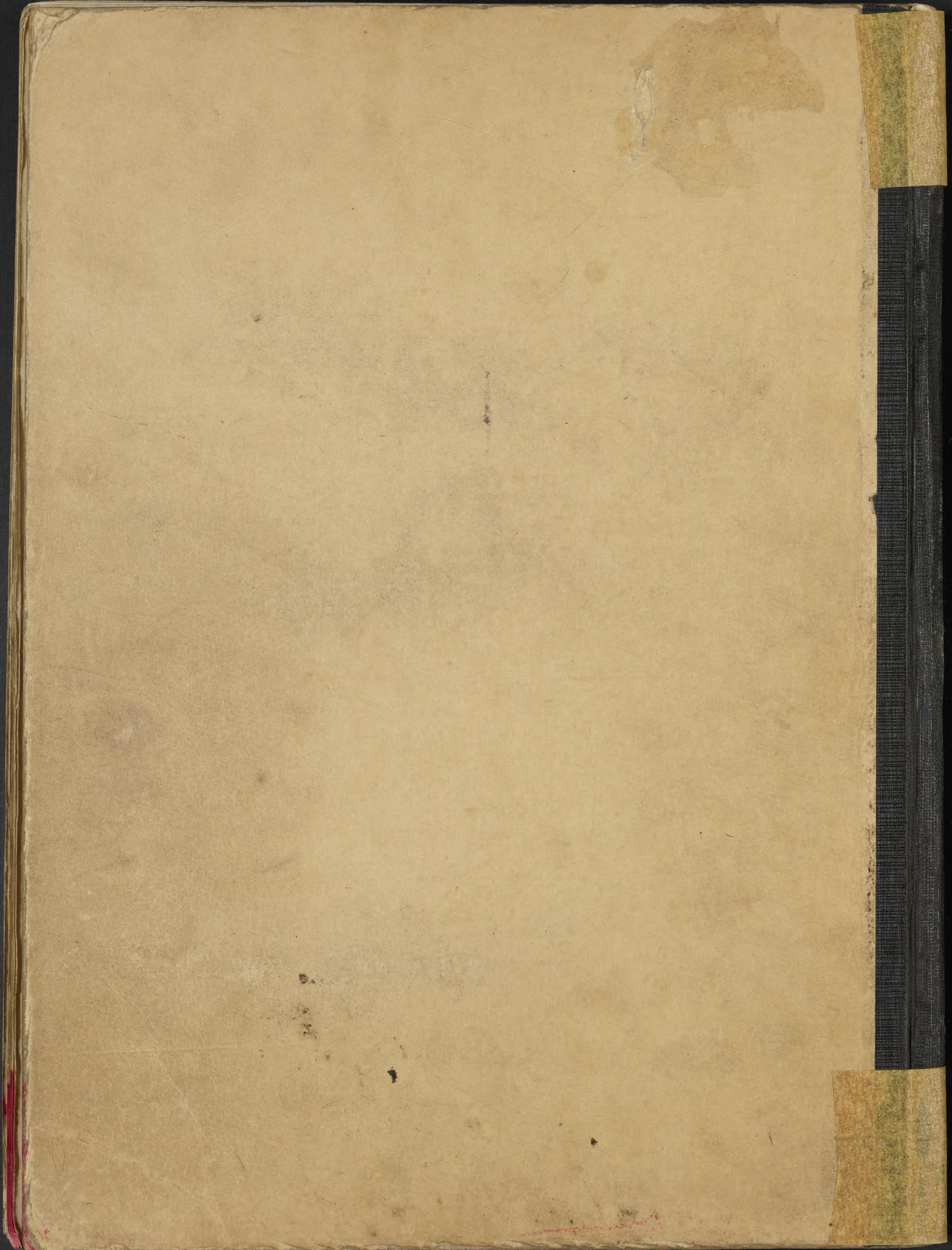
H.M.S.

day of

Time	Log (stating type)	Distance Run		Mean Revs. per Minute	True Course	Gyro Compass Course	Standard Compass Course	Deviation	Variation	Wind		Weather and Visibility	Sea and Swell	Corrected Barometric Pressure in Millibars	Temperature °F		
		Miles	Tenths							Direction (true)	Force (0-12)				Dry Bulb	Wet Bulb	Sea
0100																	
0200																	
0300																	
0400																	
0500																	
0600																	
0700																	
0800																	
0900																	
1000																	
1100																	
1200																	
Number on Sick List		Distance run through the Water		Zone Time kept at noon		Leave Granted to Ship's Company					Anchor Bearings						
1300																	
1400																	
1500																	
1600																	
1700																	
1800																	
1900																	
2000																	
2100																	
2200																	
2300																	
2400																	

CAPTAIN (D)
 HALIFAX
 DEC 17 1943

160.





Library and Archives
Canada

395 Wellington Street
Ottawa, ON K1A 0N4

Bibliothèque et Archives
Canada

395, rue Wellington
Ottawa, ON K1A 0N4

For material still subject to legislative, contractual or institutional obligations, users warrant that they will respect those obligations and not use LAC collections in a manner that would infringe the rights of others. Liability that may arise in the use of a copy is assumed in full by the user. LAC accepts no responsibility for unauthorized use of collection material by users.

To ensure proper citation and to facilitate relocation of an item, the source of the material and its reference number should always accompany the copy.

Pour les documents faisant encore l'objet d'obligations législatives, contractuelles ou institutionnelles, les usagers s'engagent à respecter ces obligations et à ne pas utiliser les documents des collections de BAC de façon à nuire aux droits d'autrui. Ils doivent assumer entièrement toute responsabilité qui pourrait découler de l'utilisation d'une reproduction de document. BAC décline toute responsabilité quant à l'utilisation non autorisée de documents provenant de ses collections.

Afin de citer un document avec exactitude et d'en faciliter le repérage, sa source et son numéro de référence doivent toujours accompagner la reproduction.

TITLE/TITRE : <i>Ship's log - DUNDAS. 1942/04/02-1942/06/28</i>
FILE/DOSSIER :
REFERENCE NUMBER / NUMÉRO DE RÉFÉRENCE: <i>RG24-D-2, Volume number: 7267</i>
PAGE(S) : 93
DATE : 27/03/2023