



**INFORMATION REGARDING
MOUNTING AND WEARING
of
DECORATIONS, CAMPAIGN STARS
AND MEDALS**



*Published under the authority
of the
HON. MILTON F. GREGG,
Minister of the
Department of Veterans Affairs*

*Information regarding the Wearing of Decorations,
Campaign Stars and Medals generally*

The following information is published in order that those awarded War Decorations, Campaign Stars and Medals and Long Service or Efficiency Medals, particularly those earned during the Second World War may know how they should be worn either on civilian clothes on appropriate occasions or in uniform if now serving in the Reserve or Auxiliary Armed Forces.

WORLD WAR TWO DECORATIONS

The following Campaign Stars and Medals were instituted in recognition of service in the Second World War and are worn in the order shown:

Order of Wearing	Description of Ribbon	Clasp or Emblem (if awarded)
1—1939-45 Star	Dark blue, red and light blue in three equal vertical stripes. This ribbon is worn with the dark blue stripe furthest from the left shoulder.	Battle of Britain
2—Atlantic Star	Blue, white and sea green shaded and watered. This ribbon is worn with the blue edge furthest from the left shoulder.	Air Crew Europe or France and Germany.
3—Air Crew Europe Star	Light blue with black edges and in addition a narrow yellow stripe on either side.	Atlantic or France and Germany.
4—Africa Star	Pale buff, with a central vertical red stripe and two narrower stripes one dark blue, and the other light blue. This ribbon is worn with the dark blue stripe furthest from the left shoulder.	8th Army or 1st Army or North Africa 1942-43.
5—Pacific Star	Dark green with red edges, a central yellow stripe, and two narrow stripes one dark blue and the other light blue. This ribbon is worn with the dark blue stripe furthest from the left shoulder.	Burma

Order of Wearing	Description of Ribbon	Clasp or Emblem (if awarded)
6—Burma Star	Dark blue with a central red stripe and in addition two orange stripes.	Pacific
7—Italy Star	Five vertical stripes of equal width, one in red at either edge and one in green at the centre, the two intervening stripes being in white.	
8—France and Germany Star	Five vertical stripes of equal width, one in blue at either edge and one in red at the centre, the two intervening stripes being in white.	Atlantic
9—Defence Medal	Flame coloured with green edges, upon each of which is a narrow black stripe	Silver laurel leaves (King's Commendation for brave conduct. (Civil)
10—Canadian Volunteer Service Medal	Green, scarlet, royal blue, scarlet, green; each green and scarlet stripe being three-sixteenths of an inch in width. (Worn with marching figures to the front.)	A silver clasp with Maple Leaf Emblem in relief.
11—War Medal 1939-45	A narrow central red stripe with a narrow white stripe at either side. A broad red stripe at either edge, and two intervening stripes in blue.	Oak Leaf
12—Oak Leaf Emblem	A bronze Oak Leaf worn on ribbon of the War Medal 1939-45.	Awarded to those who were Mentioned in Despatches or awarded a King's Commendation.

THE WEARING OF CLASPS

In the following instances, where a member of the Forces qualified for the award of more than one Campaign Star or Clasp only the Star first earned will be granted, the award of the second Star being denoted by the wearing of a Clasp on the ribbon of the Star first earned:—

1939-45 Star—

The Clasp "Battle of Britain" is granted only for personnel who flew in fighter aircraft engaged in the Battle of Britain between 10 July and 31st October 1940. This Clasp is worn on the ribbon of the 1939-45 Star.

Atlantic Star—

Personnel qualifying for the Atlantic Star, the Air Crew Europe Star or the France and Germany Star, or two of these stars, will be awarded only the campaign star for which they **first** qualified. They will, however, be awarded a clasp to show that they rendered qualifying service for a second star. A further clasp will **not** be awarded to those who rendered service which would have qualified for the third star.

The Air Crew Europe Star—

Personnel qualifying for the Air Crew Europe, the France and Germany or the Atlantic Star, or two of these stars, will be awarded only the campaign star for which they **first** qualified. They will, however, be awarded a clasp to show that they rendered qualifying service for a second star. A further clasp will **not** be awarded to those who rendered service which would have qualified for the third star.

The Africa Star—

A clasp "North Africa 1942-43" may be earned for approved service with the Eighth Army between 23 October 1942 and 12 May 1943; with the First Army between

8th November 1942 and 12th May 1943; or with the 18th Army Group Headquarters between 15th February and 12th May 1943 if personnel did not already qualify for either the 8th or 1st Army Clasp.

Pacific Star and Burma Star—

The Pacific Star and the Burma Star are alternative awards. Personnel who by their service qualified for both the Pacific and the Burma Stars will be awarded only the campaign star for which they **first** qualified. They will, however, be awarded a clasp to show that they rendered service which qualified for the second star.

France-Germany Star—

Personnel qualifying for the France and Germany Star, the Atlantic Star or the Air Crew Europe Star, or two of these stars, will be awarded only the campaign star for which they **first** qualified. They will, however, be awarded a clasp to show that they rendered qualifying service for a second star. A further clasp will **not** be awarded to those who rendered service which would have qualified for the third star.

THE MOUNTING OF MEDALS

In order that medals may be properly worn a "medal bar brooch" is enclosed for mounting them. The following instructions are for your assistance:

Medals are mounted with the senior medal on the right or furthest from the left shoulder. If you are in possession of a Conspicuous Gallantry Medal, Military Medal, Distinguished Flying Medal, British Empire Medal or other

gallantry award this will be worn to the right of other stars or medals, which will be worn from right to left in the order shown on the last page.

WORLD WAR ONE MEDALS

If you have been awarded medals for the First World War these will be worn after gallantry awards, if any, in the following order; 1914-15 Star, British War Medal, Victory Medal, followed by Campaign Stars and Medals for the Second World War in the order previously laid down.

FOREIGN MEDALS LAST

The Jubilee and/or Coronation Medals are worn after campaign stars and medals and are followed by Long Service or Efficiency Decorations and Medals. Authorized Foreign Orders, Decorations and Medals are worn last as follows:

Foreign Orders —in order of date of award
Foreign Decorations—in order of date of award
Foreign Medals —in order of date of award
irrespective of nationality.

FIVE MEDALS MAXIMUM

It has been found that not more than five medals can be worn side by side in one row without overlapping and up to that number, medals are mounted as follows:

Run the ribbon enclosed with each star or medal through the ring or clasp on the star or medal so that the ring or clasp is in the middle of the ribbon, then place the double ribbon over the top of the bar and bring it back through the slot in the bar and sew the underneath ribbon to the bar, using the small holes in the bar for that purpose.

LENGTH OF RIBBON

The length of ribbon to be worn showing is one inch only, measured from the top of the ring or clasp through which the ribbon passes on the medal to the top of the bar except where a Decoration or Foreign award calls for the wearing of a longer ribbon, when the ribbon of campaign stars and War medals will be lengthened so that the bottom edge of all decorations, stars and medals will be in a straight even line.

WEARING OF CLASPS

The clasps on campaign star ribbons and on the ribbon of the Canadian Volunteer Service Medal will be worn one-half inch above the ring or bar of the star or medal; when more than one is worn they should form a straight line from right to left.

IF OVERLAPPING IS NECESSARY

Where six or more stars and medals are worn it will be necessary for them to overlap. The medal at the left of the bar should be placed first and the remainder of the ribbons placed so that they overlap equally, the medal on the right, or senior medal, being in full view. When mounting medals in this manner it is not possible to bring the ribbon back through the slot in the bar and it will have to be brought straight down the back of the bar to which it will be sewn.

The illustrations on pages 10 and 11 show how more than five stars and medals are mounted, and how medals are mounted side by side.



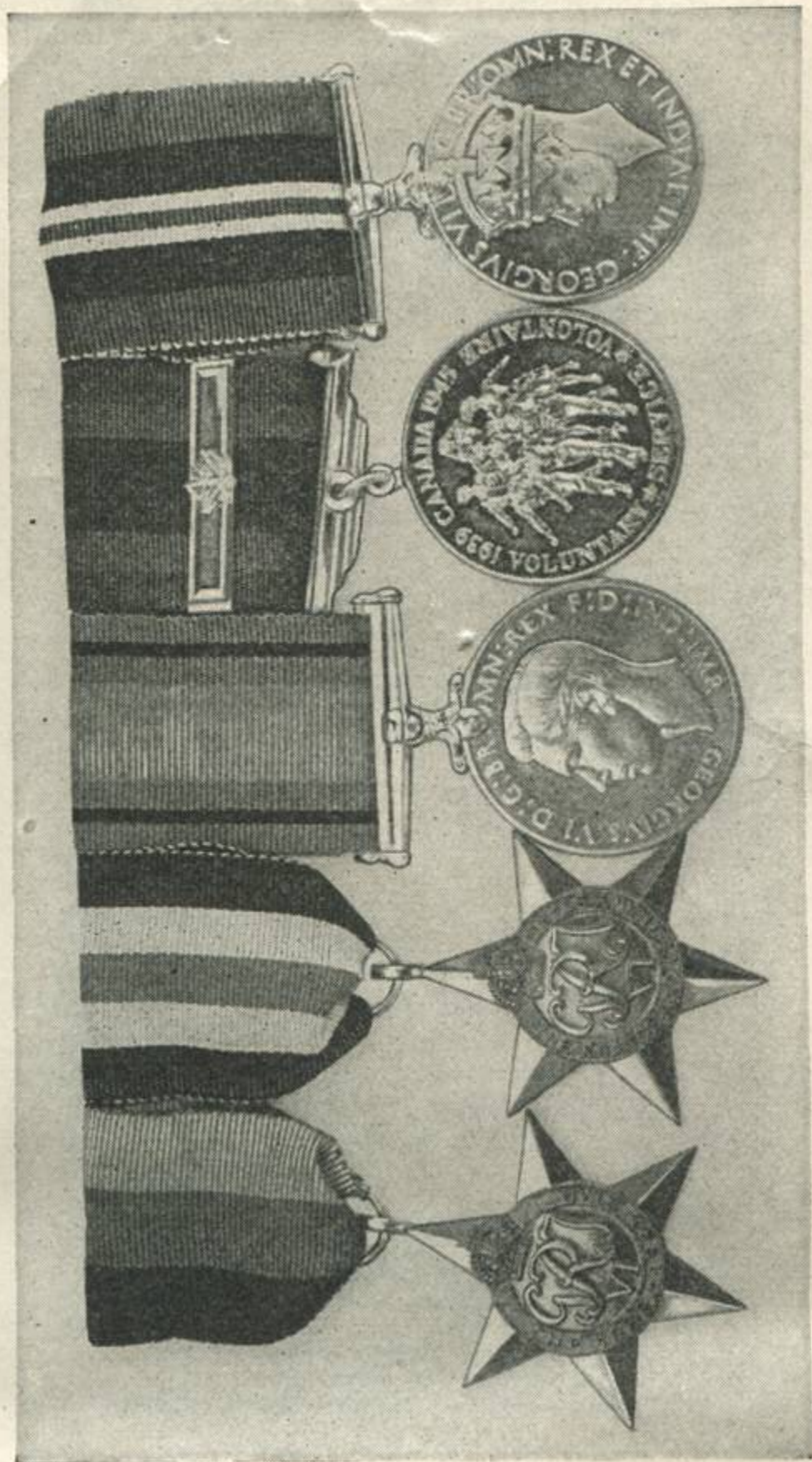
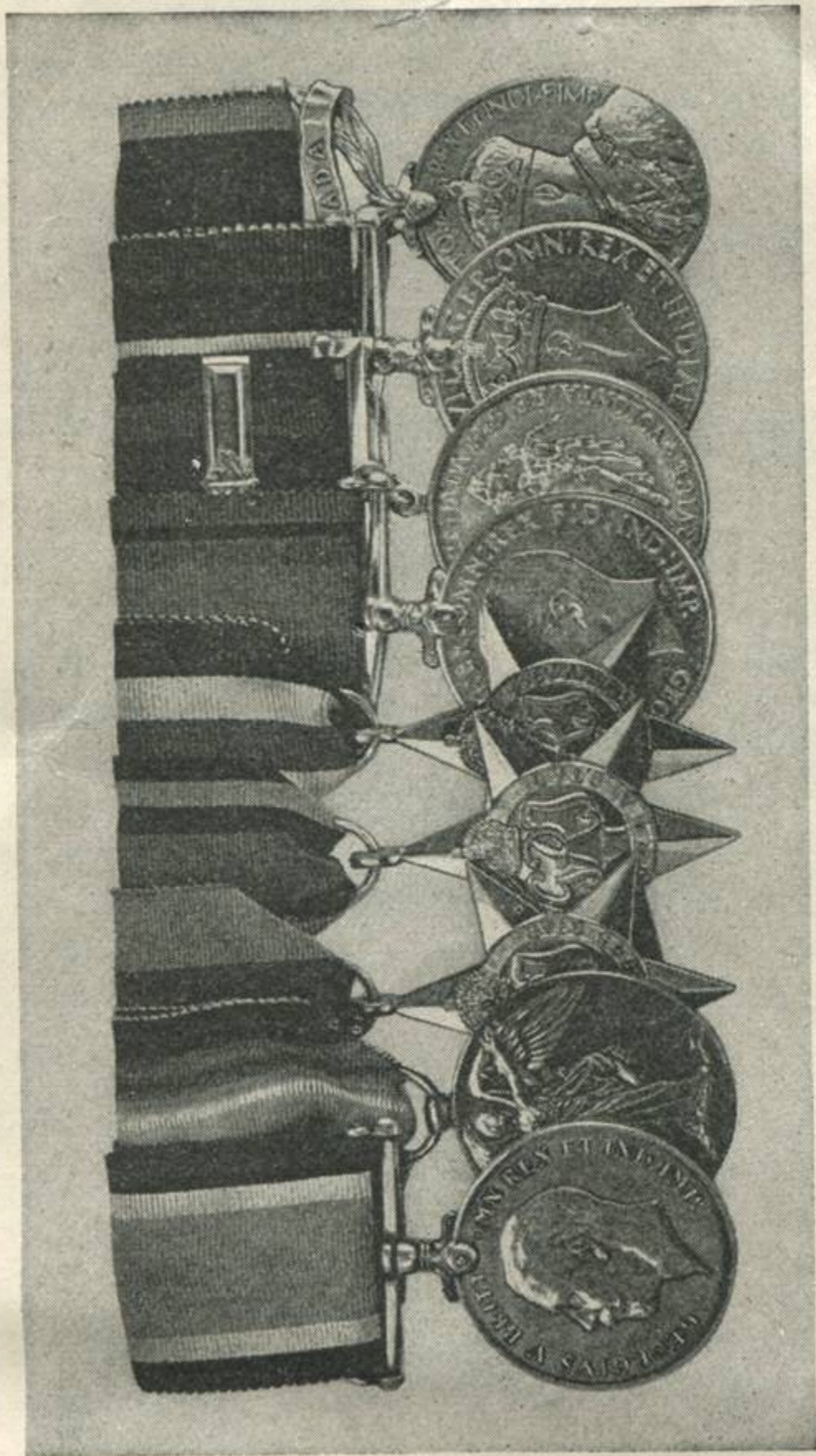
FOR FURTHER INFORMATION

Should you consider you are entitled to any campaign stars and/or medals other than those enclosed please write

*The Department of Veterans Affairs,
War Service Records (Awards),
Ottawa, Ontario.*

and be sure to give the branch of the service in which you served, your service number, and full christian names.

The word "right" used in these instructions means as the medals are worn, that is, furthest from the left shoulder.



Order in which Navy, Army and Air Force Decorations, Campaign Stars and Medals are worn

Abbreviation shown after name of recipient

Victoria Cross	V.C.
George Cross	G.C.
Companion of Honour	C.H.
Order of the Bath	C.B.
Order of St. Michael and St. George	C.M.G.
Commander of the Order of the British Empire	C.B.E.
Distinguished Service Order	D.S.O.
Officer of the Order of the British Empire	O.B.E.
Member of the Order of the British Empire	M.B.E.

Decorations

Royal Red Cross	R.R.C.
Distinguished Service Cross	D.S.C.
Military Cross	M.C.
Distinguished Flying Cross	D.F.C.
Air Force Cross	A.F.C.
Royal Red Cross (Class II)	A/R.R.C.
Medal for Distinguished Conduct in the Field	D.C.M.
Conspicuous Gallantry Medal	C.G.M.
George Medal	G.M.
Distinguished Service Medal	D.S.M.
Military Medal	M.M.
Distinguished Flying Medal	D.F.M.
Air Force Medal	A.F.M.
British Empire Medal	B.E.M.

War Medals (In order of date of campaign for which awarded)

War Medals 1939

1939-45 Star	
Atlantic Star	
Air Crew Europe Star	
Africa Star	
Pacific Star	
Burma Star	
Italy Star	
France and Germany Star	
Defence Medal	
Canadian Volunteer Service Medal (Worn with marching figures to the front)	

War Medal 1939-45

Jubilee and Coronation Medals (In order of date of award)

Efficiency and Long Service Decorations and Medals

Long Service and Good Conduct Medal	
Naval Long Service and Good Conduct Medal	
Medal for Meritorious Service	
Royal Air Force Meritorious Service Medal	
Royal Air Force Long Service and Good Conduct Medal	
Colonial Auxiliary Forces Officers Decoration	V.D.
Colonial Auxiliary Forces Long Service Medal	
Canadian Efficiency Decoration	E.D.
Canadian Efficiency Medal	

Foreign Orders—in order of date of award

Foreign Decorations—in order of date of award

Foreign Medals—in order of date of award (irrespective of nationality)